



44 NEW KING STREET
Bath

Carter Jonas

GROUND FLOOR FLAT, 44 NEW KING STREET, BATH, SOMERSET, BA1 2BN

Entrance hall • Kitchen/Sitting room • Bedroom •
Shower room

DESCRIPTION

This is a really charming one bedroom property with light and spacious rooms on the ground floor of a Grade II Listed Georgian townhouse.

The property has an integrated kitchen in the open plan kitchen/dining/sitting room, a shower room and a double bedroom to the rear.

The apartment has lovely high ceilings and period features. The property is only a short walk to all the amenities of the city.

The Scallop Shell and the brand new Sidney's restaurant are only around the corner and the Bath to Bristol cycle path that also links to the Two Tunnels network is right by your front door.

SITUATION

New King Street is conveniently located in the city centre, with all of its amenities and leisure facilities – including Royal Victoria Park with 57 acres of open parkland and botanical gardens – within easy walking distance.

Bath has a wide range of independent retailers, restaurants, museums, theatre and art galleries.

The city also has a wide range of excellent local schools and the University of Bath has an international reputation for its high standards and Olympic training facilities. Bath has a mainline rail link to London Paddington and Bristol Temple Meads from Bath Spa.

A WELL-PRESENTED, LIGHT AND SPACIOUS ONE BEDROOM GROUND FLOOR APARTMENT CLOSE TO THE CENTRE OF BATH. NO ONWARD CHAIN. HOLIDAY LETS ARE PERMITTED.



ADDITIONAL INFORMATION

Tenure: Leasehold (999 years from 25 March 1987)

Service Charge: £2,220 per annum

Ground Rent: £20 per annum

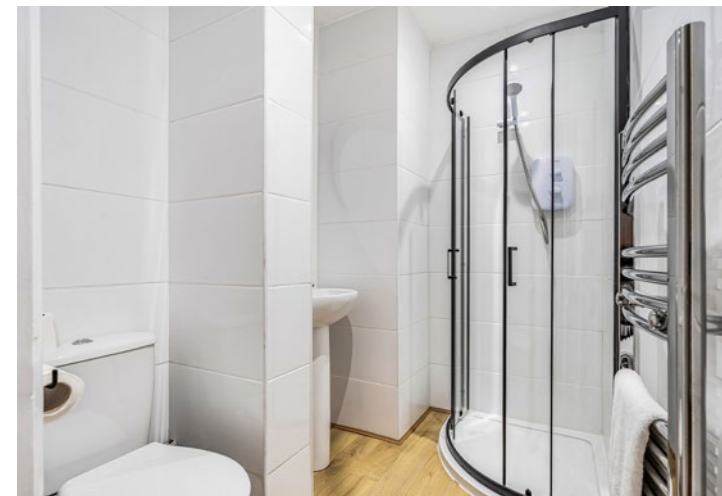
Services: All mains services are connected

Local Authority: Bath and North East Somerset Council

Council Tax: Band A

EPC: Band C

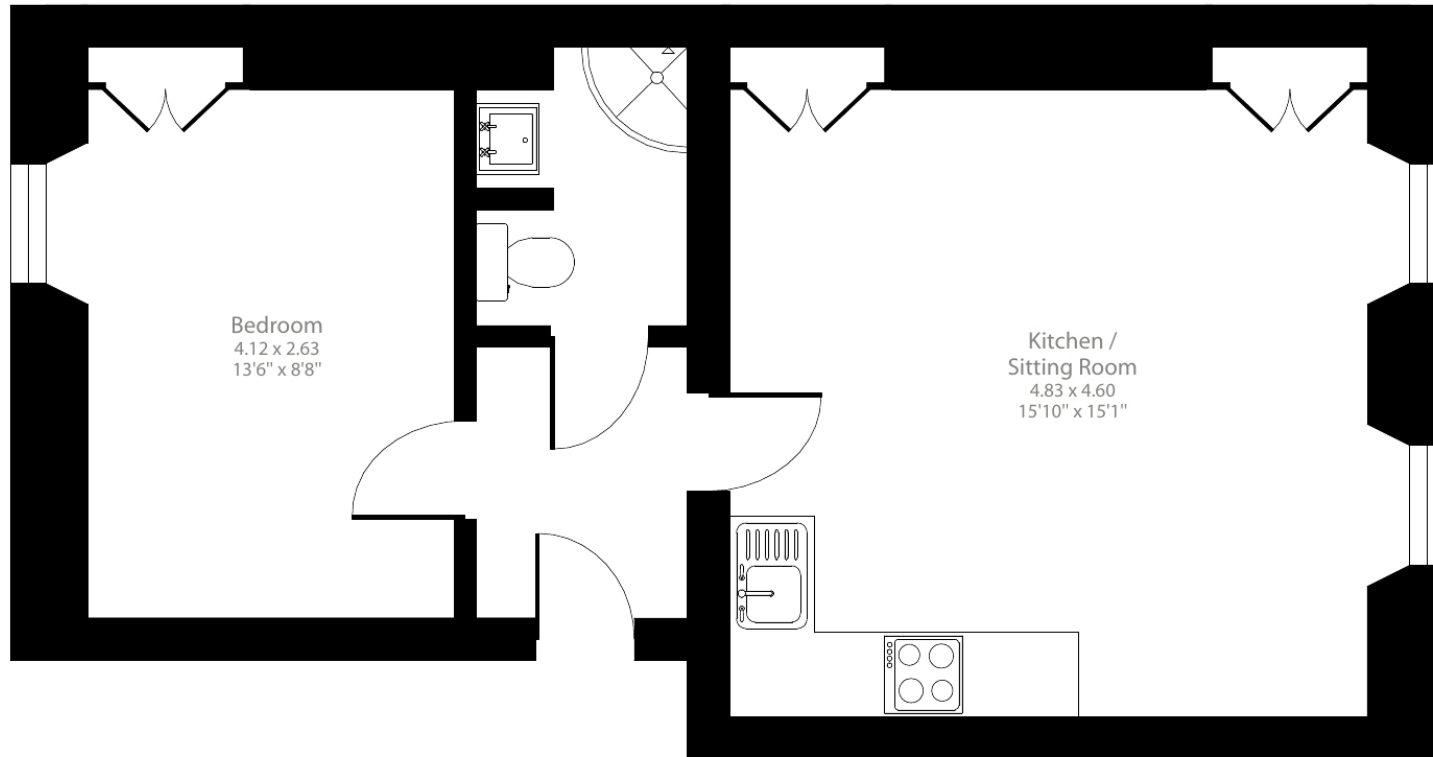
Viewing: Strictly by appointment with Carter Jonas



New King Street, Bath, BA1

Approximate Area = 441 sq ft / 41 sq m

For identification only - Not to scale



Ground Floor



Floor plan produced in accordance with RICS Property Measurement 2nd Edition, Incorporating International Property Measurement Standards (IPMS2 Residential). © nitchecom 2025. Produced for Carter Jonas. REF: 1298869

Bath 01225 747250

bath@carterjonas.co.uk

5-6 Wood Street, Bath, BA1 2JQ

carterjonas.co.uk

Offices throughout the UK

Exclusive UK affiliate of

CHRISTIE'S
INTERNATIONAL REAL ESTATE

IMPORTANT INFORMATION

These particulars are for general information purposes only and do not represent an offer of contract or part of one. Carter Jonas has made every attempt to ensure that the particulars and other information provided are as accurate as possible and are not intended to amount to advice on which you should rely as being factually accurate. You should not assume that the property has all necessary planning, building regulations or other consents and Carter Jonas have not tested any services, facilities or equipment. Any measurements and distances given are approximate only. Purchasers must satisfy themselves of all of the aforementioned by independent inspection or otherwise. Although we make reasonable efforts to update our information, neither Carter Jonas LLP nor anyone in its employment or acting on its behalf makes any representations warranties or guarantees, whether express or implied, in relation to the property, or that the content in these particulars is accurate, complete or up to date. Our images only represent part of the property as it appeared at the time they were taken. If you require further information please contact us.