



**ST PETERS COTTAGES,
BROAD HINTON**

Carter Jonas

6 ST PETERS COTTAGES, BROAD HINTON, SN4 9PA

A CHARMING TWO BEDROOM TERRACED PROPERTY SET IN THE DOWNLAND VILLAGE OF BROAD HINTON.

AMENITIES

- Two Bedrooms
- Kitchen
- Sitting room
- Cloakroom
- Bathroom
- Communal Gardens
- Allocated Parking
- Car Port

SITUATION

6 St Peters Cottages is located in the centre of the desirable village of Broad Hinton on the edge of the Marlborough Downs, within the North Wessex Downs Area of Outstanding Natural Beauty and just outside of the World Heritage site of Avebury. The village provides good local amenities including a local riding shop, village hall/post office, together with two public houses, a church and a primary school. Dauntsey's School and Pinewood are two outstanding independent schools local to the area.

It is well placed strategically for the regional centres of Marlborough, Newbury and Swindon. Marlborough is a thriving market town with excellent local shopping including some of the major retailers. National retailers include Waitrose and Tesco supermarkets and several quality restaurants including Dans, ASK, Pizza Express and Costa Coffee, with shopping areas in Hilliers Yard and Hughenden Yard. The leisure centre and golf club provide excellent sporting facilities. Swindon has a rail link to Paddington (about 1 hour), M4 Jct 15 and 16 are within 10 miles and readily accessible. The surrounding countryside is ideal for riding, cycling and walking.

DESCRIPTION

6 St Peters Cottages is a successful barn conversion completed in the 1990's to provide a courtyard development of individual houses.

The property provides well planned individual accommodation which enhances the retained features including vaulted ceilings and exposed timbers. There is a generous open plan sitting and dining room with both front and rear access. An archway leads though to the well-planned kitchen with a range of wall and base units. A cloakroom completes the downstairs accommodation.

Upstairs there are two double bedrooms, both benefitting from lovely vaulted ceilings. The bedrooms are served by the well-appointed family bathroom.

The property would make an ideal first time buyer purchase, retirement purchase or as a buy-to-let.



OUTSIDE

There are beautifully landscaped communal gardens to the front of the property, with a patio area including a large pond. There is also a car port with an allocated parking space and additional visitor car parking spaces.

GUIDE PRICE: £250,000 (Subject to Contract)

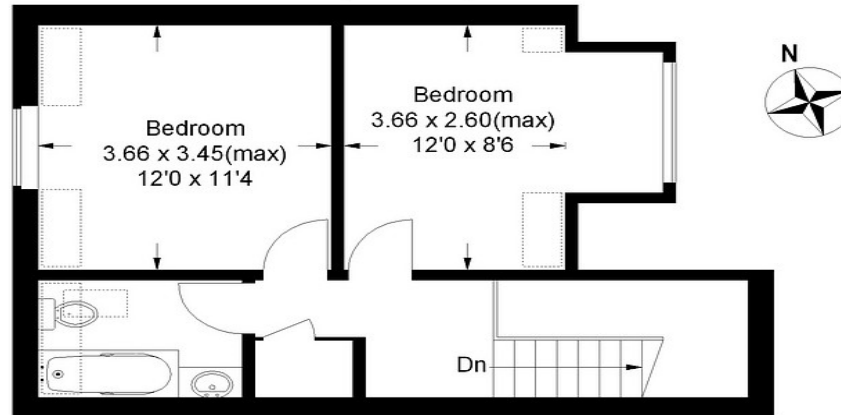
VIEWING ARRANGEMENTS: By appointment with the Marlborough Office



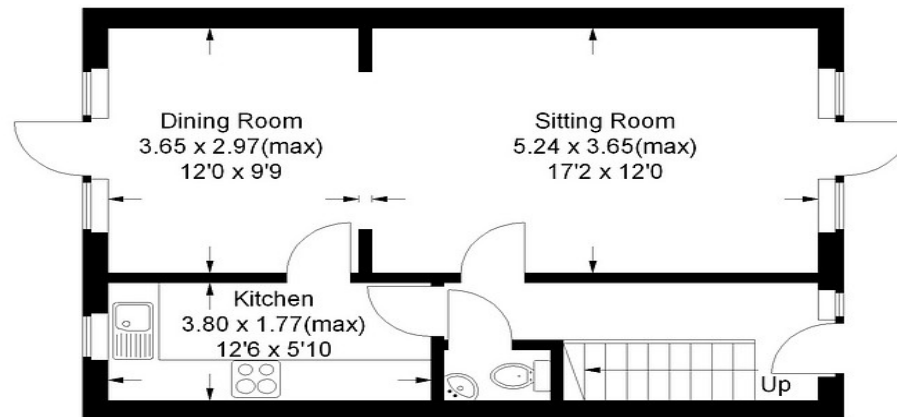
Classification L2 - Business Data

6 St. Peter's Cottages

Approximate Gross Internal Area
(Including Reduced Headroom)
87.5 sq m / 942 sq ft



First Floor



Ground Floor

SERVICES AND MATERIAL INFORMATION

- Freehold
- Grade II Listed
- Mains water, mains drainage. Electric heating.
- Council tax band: D -
- Energy efficiency rating: D
- Broadband and mobile coverage. Please refer to Ofcom website

Marlborough 01672 514 916
93 High Street, Marlborough, SN8 1HD

carterjonas.co.uk
Offices throughout the UK

IMPORTANT INFORMATION

These particulars are for general information purposes only and do not represent an offer of contract or part of one. Carter Jonas has made every attempt to ensure that the particulars and other information provided are as accurate as possible and are not intended to amount to advice on which you should rely as being factually accurate. You should not assume that the property has all necessary planning, building regulations or other consents and Carter Jonas have not tested any services, facilities or equipment. Any measurements and distances given are approximate only. Purchasers must satisfy themselves of all of the aforementioned by independent inspection or otherwise. Although we make reasonable efforts to update our information, neither Carter Jonas LLP nor anyone in its employment or acting on its behalf makes any representations warranties or guarantees, whether express or implied, in relation to the property, or that the content in these particulars is accurate, complete or up to date. Our images only represent part of the property as it appeared at the time they were taken. If you require further information please contact us.

Classification L2 - Business Data