



**MARDEN,
DEVIZES**

Carter Jonas

HAWTHORN FARMHOUSE, 62 THE STREET, MARDEN, WILTSHIRE, SN10 3RQ

A CHARMING GEORGIAN 3 BEDROOM DETACHED HOUSE LOCATED IN THE PICTURESQUE VILLAGE OF MARDEN, WILTSHIRE.

AMENITIES

- Detached House
- 3 Bedrooms
- 2 bathrooms
- Garden
- Driveway parking
- Double Garage
- Highly sought-after village
- No onward chain

SITUATION

Marden is a popular village which lies 6 miles south-east of the market town of Devizes, nestled in the Vale of Pewsey in close proximity to the Salisbury Plain and the Marlborough Downs. There is an exceptional village pub as well as the 12th century parish church, village hall and riding stables and is surrounded by glorious open countryside perfect for walking, riding and cycling.

There are an excellent range of schools from village primary and local secondary to the independent sector of St Francis Prep, Dauntsey's (bus pick up in the village), Marlborough College and St. Mary's Calne.

The area offers strong transport links either by rail from Pewsey with direct trains to London Paddington in c65 minutes or by car with easy access to the A303/M3 or M4.

DESCRIPTION

Hawthorn Farmhouse features a spacious living room with a cozy fireplace, perfect for family gatherings. There is a kitchen which leads to a utility room along with a separate dining area, with home office beyond.

Upstairs there are three well-proportioned double bedrooms, with the primary boasting spectacular views over the surrounding countryside. The property also includes two well maintained family bathrooms.

OUTSIDE

There is a spacious garden to the rear is mainly laid to lawn as well as a parking area and a double garage to the side, accessed across the shared driveway.

With its blend of traditional charm and modern comfort, the home offers the ideal retreat for those seeking a tranquil village lifestyle.



SERVICES AND MATERIAL INFORMATION

- Freehold
- Mains water, Mains Drainage, Oil Fired Central Heating
- Council tax band: F
- Energy efficiency rating: E
- Broadband and mobile coverage. Please refer to Ofcom website for more details

GUIDE PRICE: £675,000 (Subject to Contract)

VIEWING ARRANGEMENTS: By appointment with the Marlborough Office



Classification L2 - Business Data

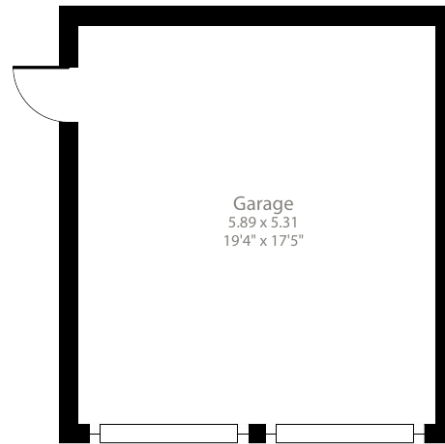
The Street, Marden, Devizes, SN10

Approximate Area = 1373 sq ft / 127.5 sq m

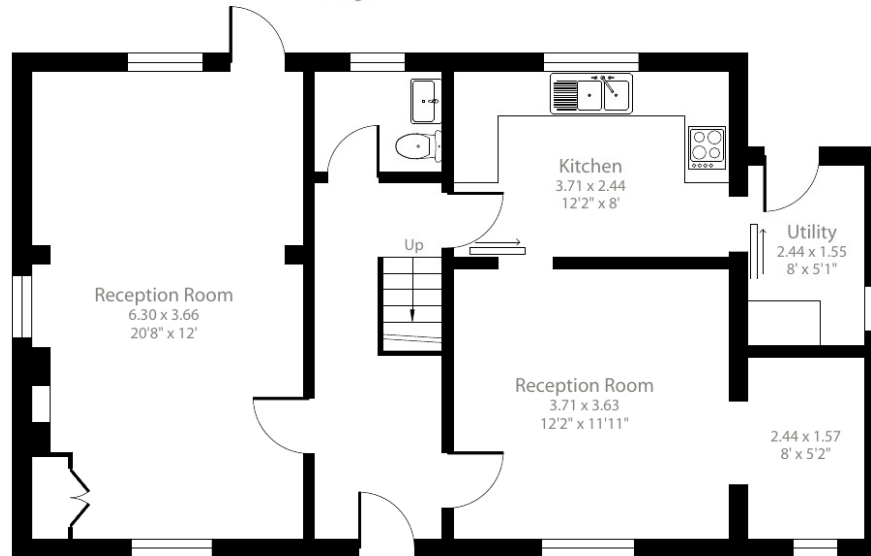
Garage = 280 sq ft / 26 sq m

Total = 1653 sq ft / 153.5 sq m

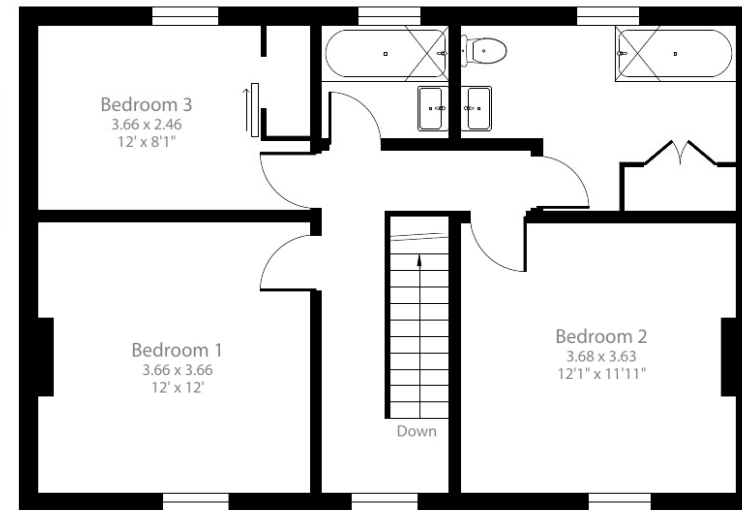
For identification only - Not to scale



Garage



Ground Floor



First Floor

 Floor plan produced in accordance with RICS Property Measurement 2nd Edition, Incorporating International Property Measurement Standards (IPMS2 Residential). © nchecom 2025. Produced for Carter Jonas. REF: 1226517

Marlborough 01672 514 916
93 High Street, Marlborough, SN8 1HD

carterjonas.co.uk
Offices throughout the UK

Exclusive UK affiliate of
CHRISTIE'S
INTERNATIONAL REAL ESTATE

IMPORTANT INFORMATION

These particulars are for general information purposes only and do not represent an offer or contract or part of one. Carter Jonas or anyone in their employment has made every attempt to ensure that the particulars and other information provided are as accurate as possible and they are not intended to amount to advice on which you should rely as being factually accurate. Full information which may be relevant to your decision regarding the property can be found on the property listing on carterjonas.co.uk or, (including off market properties) on the brochure or a separately available material information sheet. We would advise you to confirm the details of any material information prior to any offer being submitted. You should not assume that the property has all necessary planning, building regulations or other consents and Carter Jonas has not tested any services, facilities or equipment. Any measurements and distances given are approximate only. Where Carter Jonas has been provided with a floorplan by a third party, we cannot guarantee that the floorplan has been measured in accordance with IPMS. Purchasers must satisfy themselves of all of the aforementioned by independent inspection or otherwise. Our images only represent part of the property as it appeared at the time they were taken and do not represent the furnishings included; these are confirmed in a separate inventory. If you require further information, please contact us.

Classification L2 - Business Data