



SEYMOUR PLACE, LONDON, W1H

£395 per week*

Carter Jonas

SEYMOUR PLACE, LONDON, W1H

Just a few minutes from Marble Arch tube station, this bright studio flat is in an ideal location. The flat is well presented and is neutrally decorated throughout.

Available now on an unfurnished basis, or furnished by separate negotiation.

The Portman Estate's 110 acres of land within Marylebone, London W1, has a rich heritage dating back to the 16th century and is the setting for continual investment in premium residential properties, shops and independent businesses. The Portman Estate includes key places of architectural and historical interest along with a vibrant blend of shops, including Portman Village, restaurants, wine-bars, hotels and garden squares - a perfect mix of leisure opportunities for residents in the heart of London's West End.

- Studio Flat
- Neutral Decor
- Unfurnished
- Long Let
- EPC = C

Energy Efficiency Rating	
Current	Potential
Very energy efficient - lower running costs	
A (92-100)	
B (81-91)	
C (69-80)	70 74
D (55-68)	
E (39-54)	
F (21-38)	
G (1-20)	
Not energy efficient - higher running costs	
England, Scotland & Wales EU Directive 2002/91/EC	

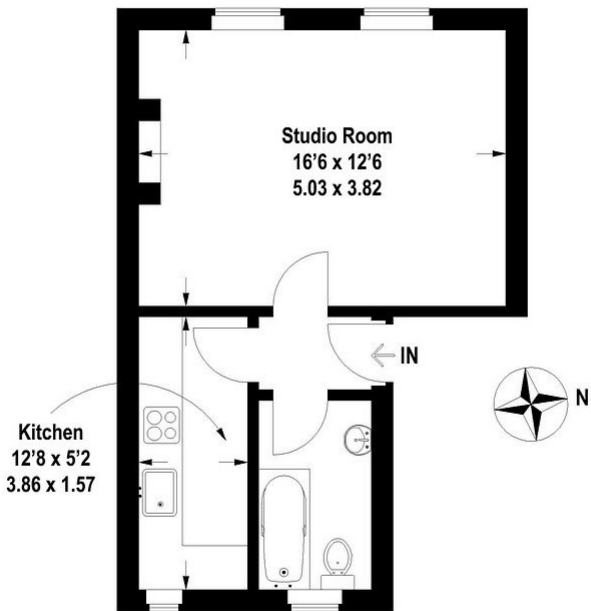
Marylebone Lettings 020 7486 8866
marylebone@carterjonas.co.uk
37 New Cavendish Street, London, W1G 9TL

carterjonas.co.uk
Offices throughout the UK



Seymour Place, W1

Approximate Gross Internal Area = 32 sq m / 344 sq ft



Second Floor

This plan is for layout guidance only. Not drawn to scale unless stated. Windows and door openings are approximate. Whilst every care is taken in the preparation of this plan, please check all dimensions, shapes and compass bearings before making any decisions reliant upon them.

IMPORTANT INFORMATION

Our property particulars do not represent an offer or contract, or part of one. The information given is without responsibility on the part of the agents or landlord and you should not rely on the information as being factually accurate about the property. Neither Carter Jonas LLP nor anyone in its employment or acting on its behalf has authority to make any representation or warranty in relation to this property. The images shown may only represent part of the property and are as they appeared at the time of being photographed. The areas, measurements and distances are approximate only. If you require any further information, please ask.
* Rent excludes reference and tenancy paperwork fees. Please contact your local branch for this information.