



SHEPHERDS CLOSE, LONDON, W1K
£4,500 per week*

Carter Jonas

SHEPHERDS CLOSE, LONDON, W1K 6EA

- Long let
- Furnished
- 4 Bedrooms
- 2 Reception rooms
- 1 Eat-in kitchen
- 1 Utility room
- 2 En suite bathrooms
- 2 Shower rooms
- Terrace
- Garden

THE PROPERTY

Located a short distance from Grosvenor Square, this charming house is set over four floors and benefits from two secluded patios and access to a private communal garden.

The property has been finished to a good standard with luxurious fixtures, fittings and furnishings and further benefits from Crestron controlled automation for heating/air conditioning, door entry system, lighting, TV and audio.

LOCATION

Mayfair is London's most fashionable destination. With London's finest buildings, largest concentration of luxury hotels, best restaurants, bars, shopping, open spaces and hidden treasures all nestled together in a beautiful village setting.

Nearest Tube: Bond Street / Marble Arch

NHA

The deposit will be £27,000 at a rental value of £4,500 (asking price)

Holding deposit = 1 weeks rent of £4,500

Rent is not payable weekly

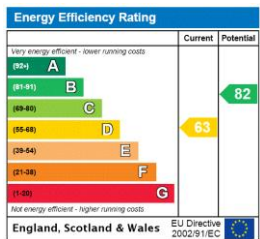
Deposit is 6 weeks rent (£4,500 pw = £27,000 deposit)

A beautifully presented four-bedroom town house of approximately
2,965 square feet



ADDITIONAL INFORMATION

Offers	Available for a minimum term of 12 months longer terms will be considered
Viewing	Strictly by appointment
Local Authority	Westminster County Council - Council Tax Band H
Material Information	Gas boiler and underfloor heating and hot water Superfast fibre to the cabinet



3 Shepherds Close, W1K

Gross internal area (approx)

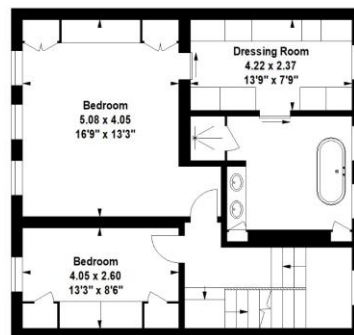
276.46 sq m (2965 sq ft)

For Identification Purposes Only. Not To Scale.

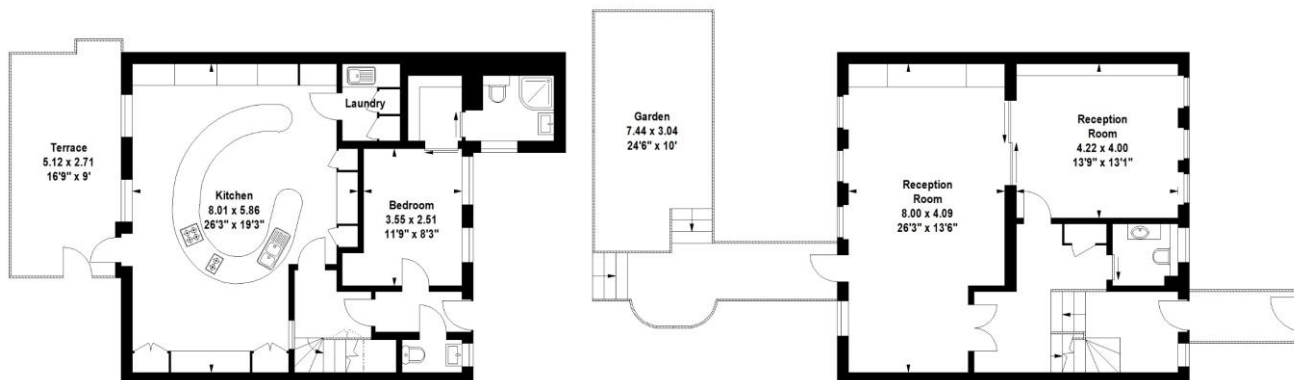
All Calculations include Any/All Areas Under 1.5m Head Height.
* As Defined by RICS - Code of Measuring Practice.



Second Floor

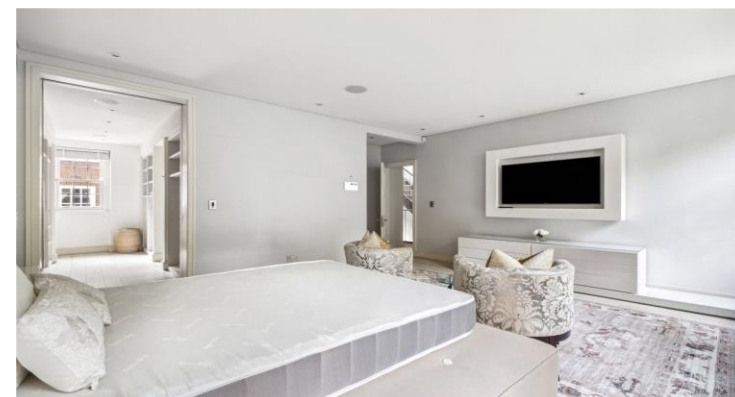


First Floor



Lower Ground Floor

Ground Floor



T: 020 7493 0676

18 Davies Street, Mayfair, London, W1K 3DS

E: mayfair@carterjonas.co.uk

A member of



Exclusive UK affiliate of

CHRISTIE'S
INTERNATIONAL REAL ESTATE

Classification L2 - Business Data

IMPORTANT INFORMATION

These particulars are for general information purposes only and do not represent an offer or contract or part of one. Carter Jonas or anyone in their employment has made every attempt to ensure that the particulars and other information provided are as accurate as possible and they are not intended to amount to advice on which you should rely as being factually accurate. Full information which may be relevant to your decision regarding the property can be found on the property listing on carterjonas.co.uk or a separately available material information sheet, and we would advise you to confirm the details of any material information prior to any offer being submitted. You should not assume that the property has all necessary planning, building regulations or other consents and Carter Jonas has not tested any services, facilities, or equipment. Any measurements and distances given are approximate only. Where Carter Jonas has been provided with a floorplan by a third party, we cannot guarantee that the floorplan has been measured in accordance with IPMS. Purchasers or prospective tenants must satisfy themselves of all of the aforementioned by independent inspection or otherwise. Our images only represent part of the property as it appeared at the time they were taken and do not represent the furnishings included; these are confirmed in a separate inventory. If you require further information, please contact us. *Administration fees may apply depending on tenancy type. Please contact your local branch for this information.