



EBURY STREET, BELGRAVIA, SW1W

£1,500 per week*

Carter Jonas

55 EBURY STREET, BELGRAVIA, LONDON, SW1W 0PA

- 24hr Concierge
- Parking Available by Separate Negotiation
- Private Garden
- 2 Bedrooms
- 2 Bathrooms
- Guest WC
- Separate Kitchen
- Furnished

A beautifully refurbished duplex apartment situated in this sought-after development with 24hr concierge. Set over two floors, with the living accommodation on the ground floor opening onto the large private garden, and two double bedrooms and two bathrooms on the upper level. Benefiting from a modern, separate kitchen and guest WC the apartment is well laid-out with a spacious feel and presented furnished throughout.

This property further benefits from having a private off-street parking, available by separate negotiation

Stylish Belgravia is located on the edge of Hyde Park. It encompasses London's prime residential garden squares and is packed with Michelin-starred restaurants, specialist shops, historic buildings and residential dwellings.

Nearest Tube: Victoria

AST

The deposit will be £9,000 at a rental value of £1,500pw (asking price)

Holding deposit = 1 weeks rent of £1,500

Deposit is 6 weeks rent (£1,500 pw = £9,000 deposit)

Council Tax Band: G

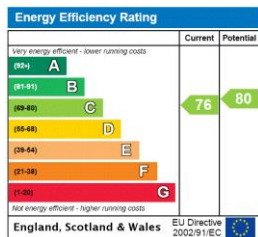
EPC Rating: C

Mains Gas Heating and Hot Water

Standard Copper Broadband

A spacious duplex apartment of approximately 1,078 square feet





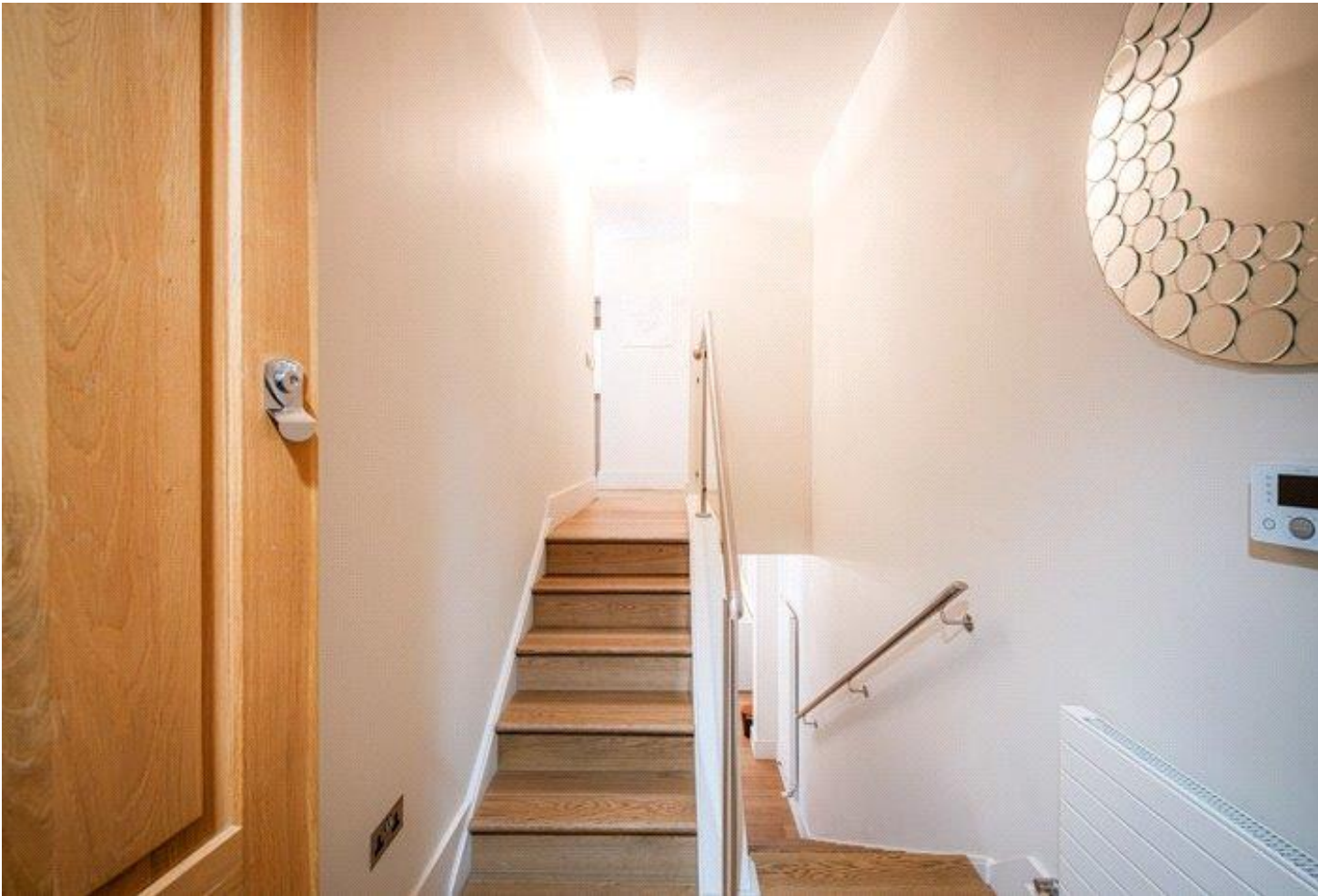
ADDITIONAL INFORMATION

Offers Available for a minimum term of 12 months longer terms will be considered

Viewing Strictly by appointment

Local Authority Westminster City Council - Council Tax Band G

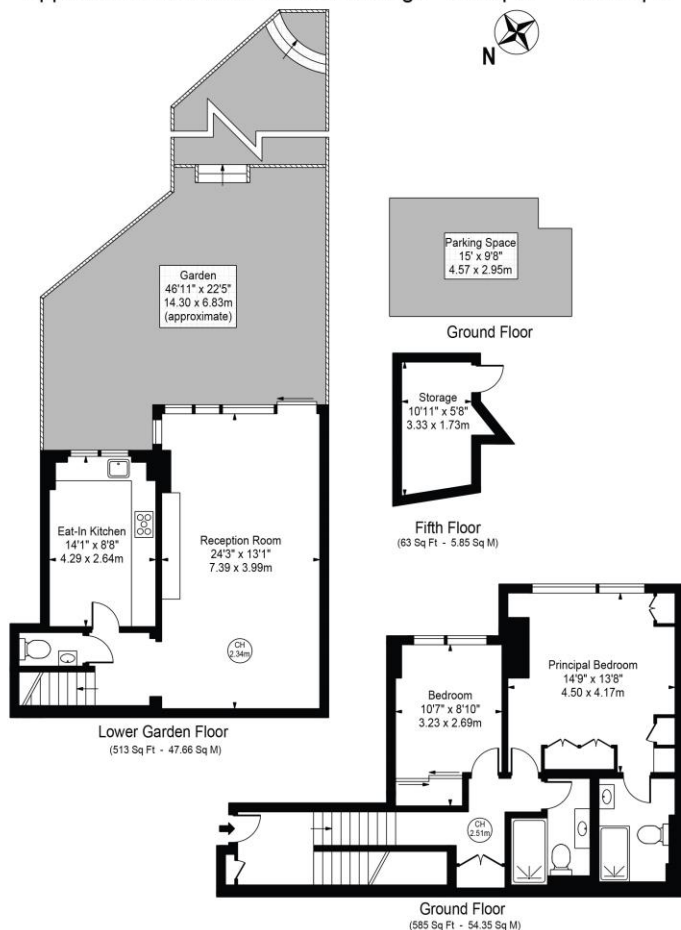
Directions



Ebury Street, SW1

Approx. Gross Internal Area 1098 Sq Ft - 102.01 Sq M
(Excluding Storage)

Approx. Gross Internal Area Of Storage 65 Sq Ft - 6.04 Sq M



For Illustration Purposes Only - Not To Scale

This floor plan should be used as a general outline for guidance only and does not constitute in whole or in part an offer or contract. Any intending purchaser or lessee should satisfy themselves by inspection, searches, enquiries and full survey as to the correctness of each statement. Any areas, measurements or distances quoted are approximate and should not be used to value a property or be the basis of any sale or let.

Copyright Morriarti Photography & Design LTD



T: 020 7493 0676

18 Davies Street, Mayfair, London, W1K 3DS

E: mayfair@carterjonas.co.uk

A member of



Exclusive UK affiliate of

CHRISTIE'S
INTERNATIONAL REAL ESTATE

Classification L2 - Business Data

IMPORTANT INFORMATION

These particulars are for general information purposes only and do not represent an offer or contract or part of one. Carter Jonas or anyone in their employment has made every attempt to ensure that the particulars and other information provided are as accurate as possible and they are not intended to amount to advice on which you should rely as being factually accurate. Full information which may be relevant to your decision regarding the property can be found on the property listing on carterjonas.co.uk or a separately available material information sheet, and we would advise you to confirm the details of any material information prior to any offer being submitted. You should not assume that the property has all necessary planning, building regulations or other consents and Carter Jonas has not tested any services, facilities, or equipment. Any measurements and distances given are approximate only. Where Carter Jonas has been provided with a floorplan by a third party, we cannot guarantee that the floorplan has been measured in accordance with IPMS. Purchasers or prospective tenants must satisfy themselves of all of the aforementioned by independent inspection or otherwise. Our images only represent part of the property as it appeared at the time they were taken and do not represent the furnishings included; these are confirmed in a separate inventory. If you require further information, please contact us. *Administration fees may apply depending on tenancy type. Please contact your local branch for this information.