



**EATON MEWS NORTH, BELGRAVIA, SW1X**  
£3,692.30 per week\*

**Carter Jonas**



---

## EATON MEWS NORTH, BELGRAVIA, LONDON, SW1X 8AR

- 4 Bedrooms
- 4 Bathrooms
- 2 Reception Rooms
- Private Roof Terrace
- Garage
- Utility Room
- Furnished
- Quiet Mews

Beautiful mews house that has been fully redecorated throughout and is offered to rent long term, furnished to a very high standard. Comprising four bedrooms, four bathrooms, two spacious reception rooms, compact garage and a separate utility and laundry room, the house offers ample family accommodation. This charming home further benefits from a large private roof terrace, lots of natural light and a modern open plan, bright and airy feel to all the living areas.

Belgravia is located slightly to the east of Knightsbridge and is the chosen location for embassies, international professionals and British alike. Bordered by Sloane Street on the west, Ebury Street to the south, Victoria station to the west and Hyde Park to the north, it is also the location of many of London's top hotels and as such draws varied, wealthy residents and an interesting mix of global visitors and part time inhabitants.

NHA

The deposit will be £22,153.80 at a rental value of £3,692.30 (asking price)

Holding deposit = 1 week's rent of £3,692.30

Rent is not payable weekly

Deposit is 6 weeks rent (£3,692.30 pw = £22,153.80 deposit)

Nearest tube: Knightsbridge/Sloane Square

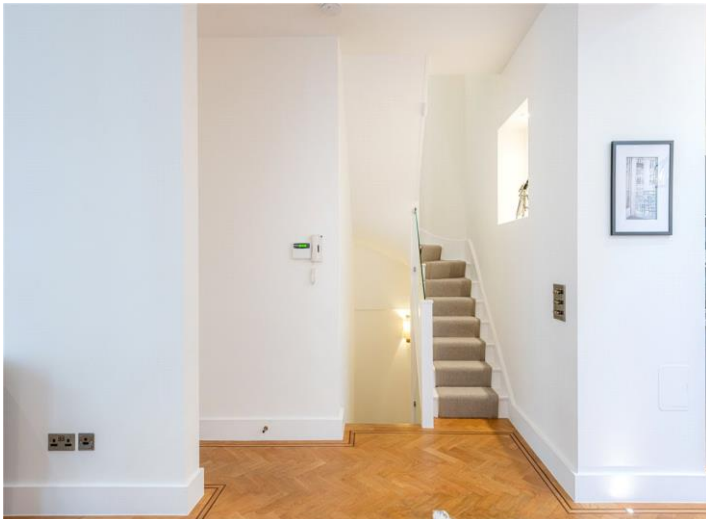
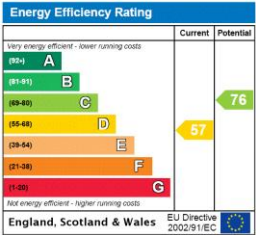
Spacious mews house in prime Belgravia measuring approximately 2,407 square feet





ADDITIONAL INFORMATION

Offers	Available for a minimum term of 12 months longer terms will be considered
Viewing	Strictly by appointment
Local Authority	Westminster City Council - Council Tax Band G
Material Information	Standard copper broadband available Boiler and underfloor heating, mains gas



## Eaton Mews North

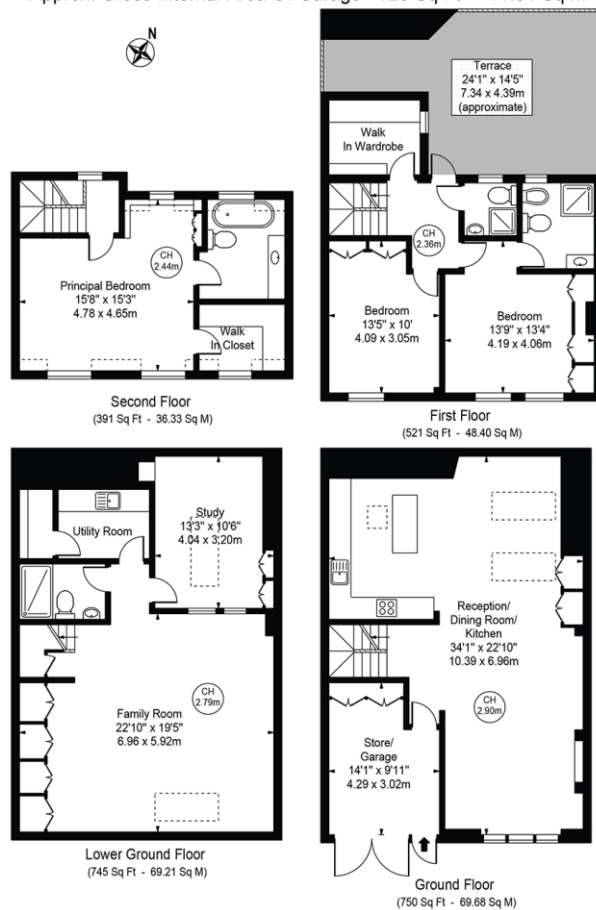
Approx. Total Internal Area 2407 Sq Ft - 223.62 Sq M

(Including Restricted Height Area, Store & Garage)

Approx. Gross Internal Area 2258 Sq Ft - 209.78 Sq M

(Excluding Restricted Height Area, Store & Garage)

Approx. Gross Internal Area Of Garage 125 Sq Ft - 11.61 Sq M



For Illustration Purposes Only - Not To Scale

This floor plan should be used as a general outline for guidance only and does not constitute in whole or in part an offer or contract. Any intending purchaser or lessee should satisfy themselves by inspection, searches, enquiries and full survey as to the correctness of each statement.

T: 020 7493 0676

18 Davies Street, Mayfair, London, W1K 3DS

E: mayfair@carterjonas.co.uk

A member of



Exclusive UK affiliate of

**CHRISTIE'S**  
INTERNATIONAL REAL ESTATE

Classification L2 - Business Data



## IMPORTANT INFORMATION

These particulars are for general information purposes only and do not represent an offer or contract or part of one. Carter Jonas or anyone in their employment has made every attempt to ensure that the particulars and other information provided are as accurate as possible and they are not intended to amount to advice on which you should rely as being factually accurate. Full information which may be relevant to your decision regarding the property can be found on the property listing on [carterjonas.co.uk](http://carterjonas.co.uk) or a separately available material information sheet, and we would advise you to confirm the details of any material information prior to any offer being submitted. You should not assume that the property has all necessary planning, building regulations or other consents and Carter Jonas has not tested any services, facilities, or equipment. Any measurements and distances given are approximate only. Where Carter Jonas has been provided with a floorplan by a third party, we cannot guarantee that the floorplan has been measured in accordance with IPMS. Purchasers or prospective tenants must satisfy themselves of all of the aforementioned by independent inspection or otherwise. Our images only represent part of the property as it appeared at the time they were taken and do not represent the furnishings included; these are confirmed in a separate inventory. If you require further information, please contact us. \*Administration fees may apply depending on tenancy type. Please contact your local branch for this information.