



NORTH ROW, MAYFAIR, W1K
£2,307.69 per week*

Carter Jonas

PARK LANE PLACE, NORTH ROW, MAYFAIR, LONDON, W1K 7DU

A two-bedroom apartment of approximately 1,315 square feet

- Furnished
- Air Conditioning
- 2 Bedrooms suites
- 2 Reception rooms
- 1 En suite bathroom
- 1 En suite shower room
- Kitchen, dining room
- Guest WC
- Parking available by separate negotiation

THE PROPERTY

This newly refurbished apartment is set over the fifth to seventh floors of a luxurious five-star hotel. The apartment benefits from a 24-hour concierge, three private terraces that boast views over the London skyline and Hyde Park, solid wood flooring, air conditioning and at an additional cost, access to the facilities of the London Marriott Hotel including use of the gym, swimming pool, underground parking and room service.

LOCATION

Mayfair is London's most fashionable destination. With London's finest buildings, largest concentration of luxury hotels, best restaurants, bars, shopping, open spaces and hidden treasures all nestled together in a beautiful village setting.

Nearest Tube: Marble Arch

AST

The deposit will be £13,846 at a rental value of £2,307.69 (asking price)

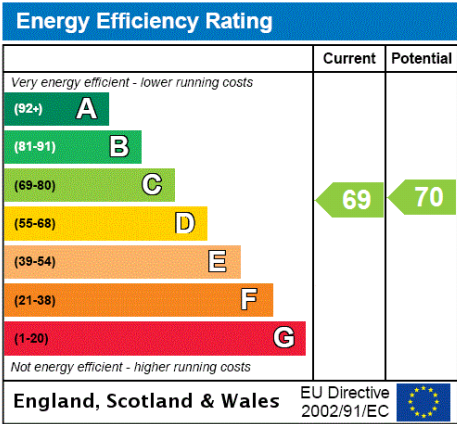
Holding deposit = 1 week's rent of £2,307.69

Deposit is 6 weeks rent (£2,307.69 pw = £13,846.14 deposit)



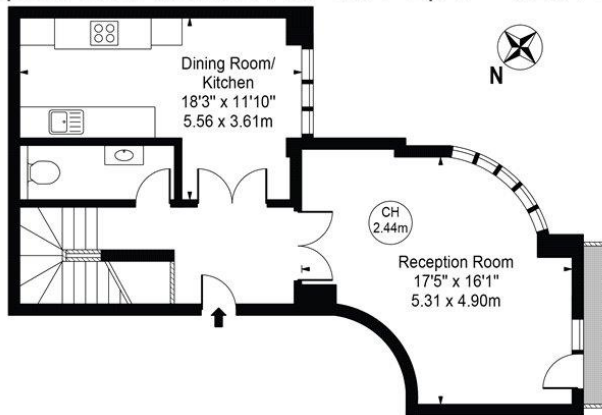
ADDITIONAL INFORMATION

Offers	Available for a minimum term of 12 months longer terms will be considered
Viewing	Strictly by appointment
Local Authority	Westminster County Council - Council Tax Band H
Material Information	Electric storage heaters Communal hot water Broadband standard copper

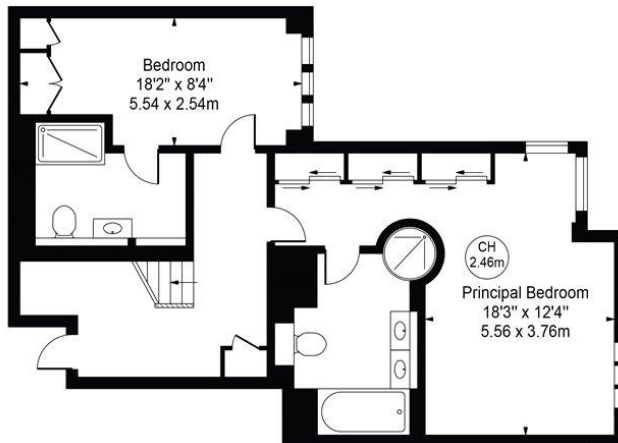


Park Lane Place

Approx. Gross Internal Area 1315 Sq Ft - 122.17 Sq M



Sixth Floor
(555 Sq Ft - 51.56 Sq M)



Fifth Floor
(760 Sq Ft - 70.60 Sq M)
For Illustration Purposes Only - Not To Scale

This floor plan should be used as a general outline for guidance only and does not constitute in whole or in part an offer or contract. Any intending purchaser or lessee should satisfy themselves by inspection, searches, enquiries and full survey as to the correctness of each statement. Any areas, measurements or distances quoted are approximate and should not be used to value a property or be the basis of any sale or let. Copyright Morriarti Photography & Design LTD



T: 020 7493 0676

18 Davies Street, Mayfair, London, W1K 3DS

E: mayfair@carterjonas.co.uk



Exclusive UK affiliate of

CHRISTIE'S
INTERNATIONAL REAL ESTATE

Classification L2 - Business Data

IMPORTANT INFORMATION

These particulars are for general information purposes only and do not represent an offer or contract or part of one. Carter Jonas or anyone in their employment has made every attempt to ensure that the particulars and other information provided are as accurate as possible and they are not intended to amount to advice on which you should rely as being factually accurate. Full information which may be relevant to your decision regarding the property can be found on the property listing on carterjonas.co.uk or a separately available material information sheet, and we would advise you to confirm the details of any material information prior to any offer being submitted. You should not assume that the property has all necessary planning, building regulations or other consents and Carter Jonas has not tested any services, facilities, or equipment. Any measurements and distances given are approximate only. Where Carter Jonas has been provided with a floorplan by a third party, we cannot guarantee that the floorplan has been measured in accordance with IPMS. Purchasers or prospective tenants must satisfy themselves of all of the aforementioned by independent inspection or otherwise. Our images only represent part of the property as it appeared at the time they were taken and do not represent the furnishings included; these are confirmed in a separate inventory. If you require further information, please contact us. *Administration fees may apply depending on tenancy type. Please contact your local branch for this information.