



STRATTON STREET, LONDON, W1J

£2,850 per week*

Carter Jonas

FLAT 5, STRATTON STREET, LONDON, W1J

- Air conditioning
- Lift
- Porter
- Modern
- Newly renovated
- Prime location
- Furnished
- Second floor

THE PROPERTY

Situated on the second floor of an elegant and well-maintained period building with lift access, this immaculately presented two double bedroom apartment has been newly refurbished to a high standard throughout. The property combines classic architectural features with stylish modern finishes, creating a sophisticated and comfortable living space ideal for both professionals and discerning tenants.

The apartment boasts generous ceiling heights, enhancing the sense of space and light. It comprises a spacious open-plan reception and dining area, perfect for entertaining, with large sash windows that flood the room with natural light. The sleek, fully fitted kitchen is equipped with integrated modern appliances, providing a functional and elegant cooking space. Both double bedrooms are well-proportioned and benefit from ample built-in storage, while the contemporary bathroom is finished with high-quality fixtures and fittings.

Further benefits include contemporary furnishings, neutral décor, and high-spec finishes throughout, offering a turnkey solution in one of London's most prestigious postcodes.

Ideally located in the heart of Mayfair, the apartment offers immediate access to the world-renowned boutiques, restaurants, and private members' clubs that define the area.

A beautifully refurbished two-bedroom apartment in the heart of Mayfair, moments from Green Park.



ADDITIONAL INFORMATION	
Offers	Available for a minimum term of 12 months longer terms will be considered
Viewing	Strictly by appointment
Local Authority	- Council Tax Band

NHA

The deposit will be £17,100 at a rental value of £2,850 (asking price).

Holding deposit = 1 weeks rent of £2,850

Deposit is 6 weeks rent (£2,850 pw = £17,100 deposit)

Minimum Term 12 months

Closest tube: Green Park

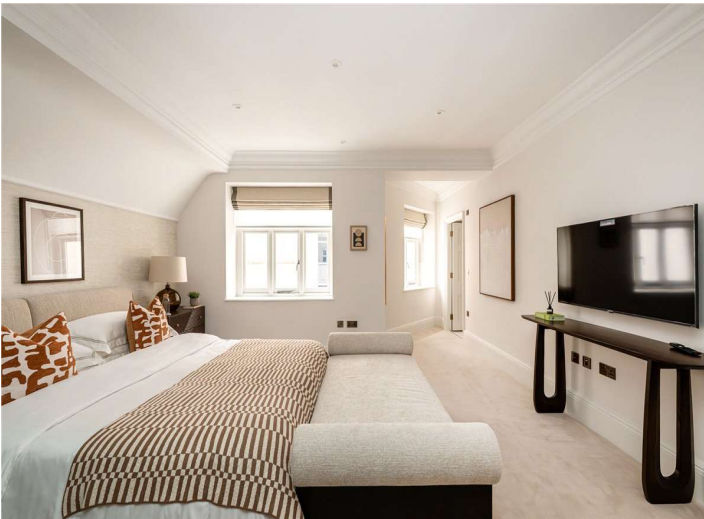
Council Tax Band H

Local Authority: City of Westminster

Main heating: Warm air, Electricaire

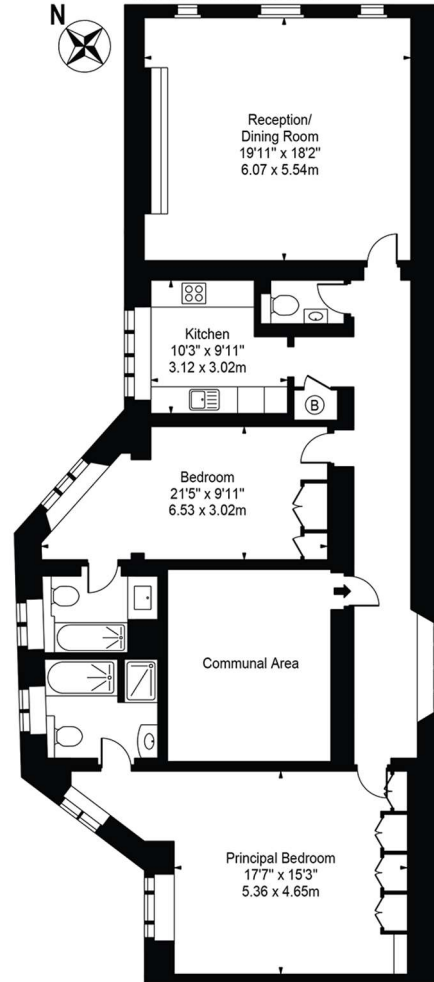
Copper Broadband

Score	Energy rating	Current	Potential
92+	A		
81-91	B		
69-80	C	77 C	77 C
55-68	D		
39-54	E		
21-38	F		
1-20	G		



Stratton Street, W1J

Approx. Gross Internal Area 1346 Sq Ft - 125.05 Sq M
(Excluding Communal Area)



Second Floor

For Illustration Purposes Only - Not To Scale

This floor plan should be used as a general outline for guidance only and does not constitute in whole or in part an offer or contract. Any intending purchaser or lessee should satisfy themselves by inspection, searches, enquiries and full survey as to the correctness of each statement. Any areas, measurements or distances quoted are approximate and should not be used to value a property or be the basis of any sale or let.

Copyright Morriarti Photography & Design LTD



T: 020 7493 0676

18 Davies Street, Mayfair, London, W1K 3DS

E: mayfair@carterjonas.co.uk

A member of



Exclusive UK affiliate of

CHRISTIE'S
INTERNATIONAL REAL ESTATE

Classification L2 - Business Data

IMPORTANT INFORMATION

These particulars are for general information purposes only and do not represent an offer or contract or part of one. Carter Jonas or anyone in their employment has made every attempt to ensure that the particulars and other information provided are as accurate as possible and they are not intended to amount to advice on which you should rely as being factually accurate. Full information which may be relevant to your decision regarding the property can be found on the property listing on carterjonas.co.uk or a separately available material information sheet, and we would advise you to confirm the details of any material information prior to any offer being submitted. You should not assume that the property has all necessary planning, building regulations or other consents and Carter Jonas has not tested any services, facilities, or equipment. Any measurements and distances given are approximate only. Where Carter Jonas has been provided with a floorplan by a third party, we cannot guarantee that the floorplan has been measured in accordance with IPMS. Purchasers or prospective tenants must satisfy themselves of all of the aforementioned by independent inspection or otherwise. Our images only represent part of the property as it appeared at the time they were taken and do not represent the furnishings included; these are confirmed in a separate inventory. If you require further information, please contact us. *Administration fees may apply depending on tenancy type. Please contact your local branch for this information.