



**CHARLES STREET, LONDON, W1J**  
£1,024,000

**Carter Jonas**

# CHARLES STREET, LONDON, W1J

## A BEAUTIFULLY CRAFTED THREE BEDROOM DUPLEX IN THE HEART OF MAYFAIR.

A beautifully crafted three bedroom duplex in the heart of Mayfair, moments from Berkeley Square. Designed by 1508 London and developed by REDD, this residence blends Georgian heritage with contemporary luxury.

Offered as a 1/8th co ownership share, each share providing 45 days of annual usage, seamless management, and the ability to swap stays with luxury homes worldwide. A rare opportunity to own a turnkey Mayfair home through a flexible ownership structure, without the complexity of full ownership.

### Second Floor

Grand open plan reception, dining and kitchen with large sash windows and oak herringbone floors  
Bespoke kitchen with marble worktops, Gaggenau & Miele appliances, and a full-height wine fridge  
Formal second reception room  
Dedicated study  
Guest WC

### Third Floor

Luxurious principal suite with marble bathroom and walk in wardrobe. Two further double bedrooms with built in storage.  
Beautifully appointed family bathroom. Utility room.

Service Charge: Ask Agent

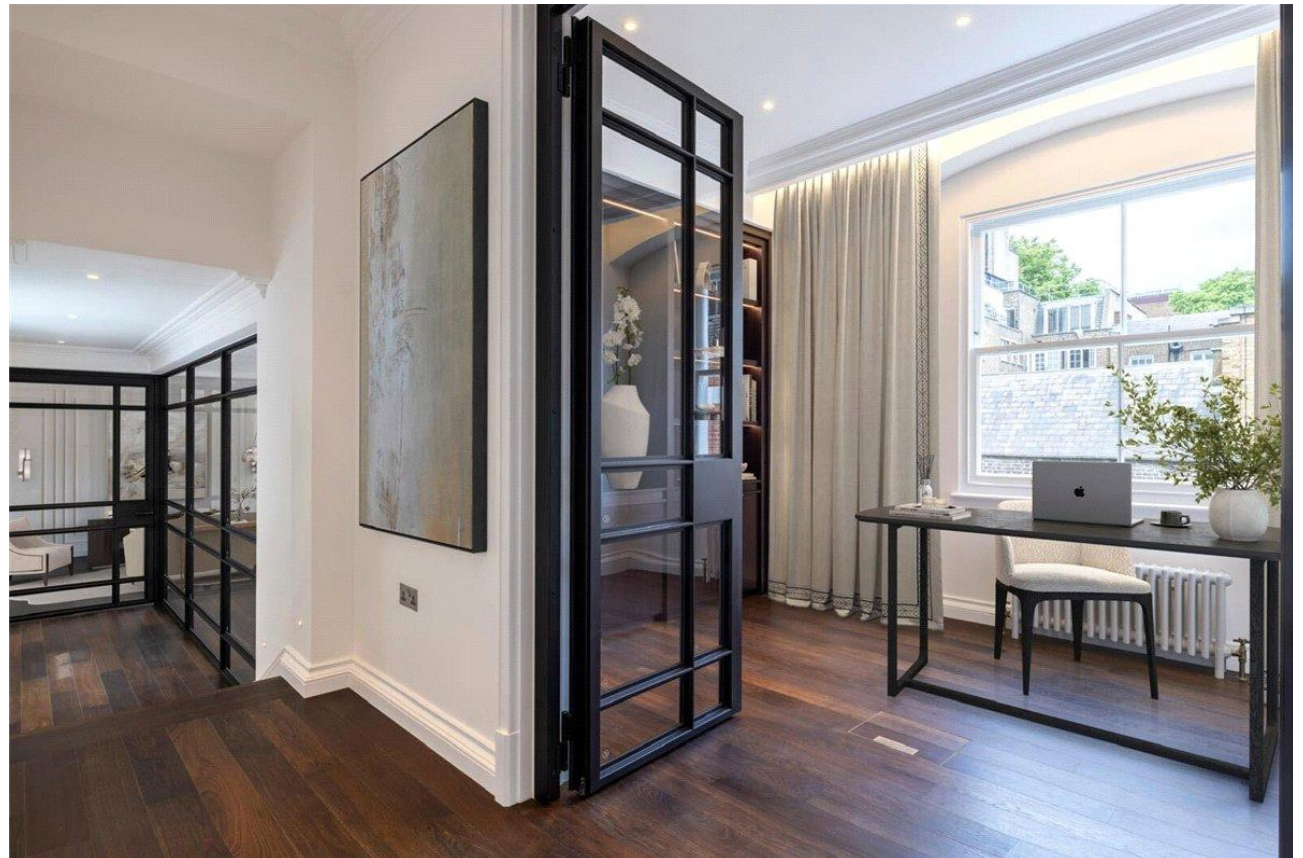
Ground Rent: Ask Agent

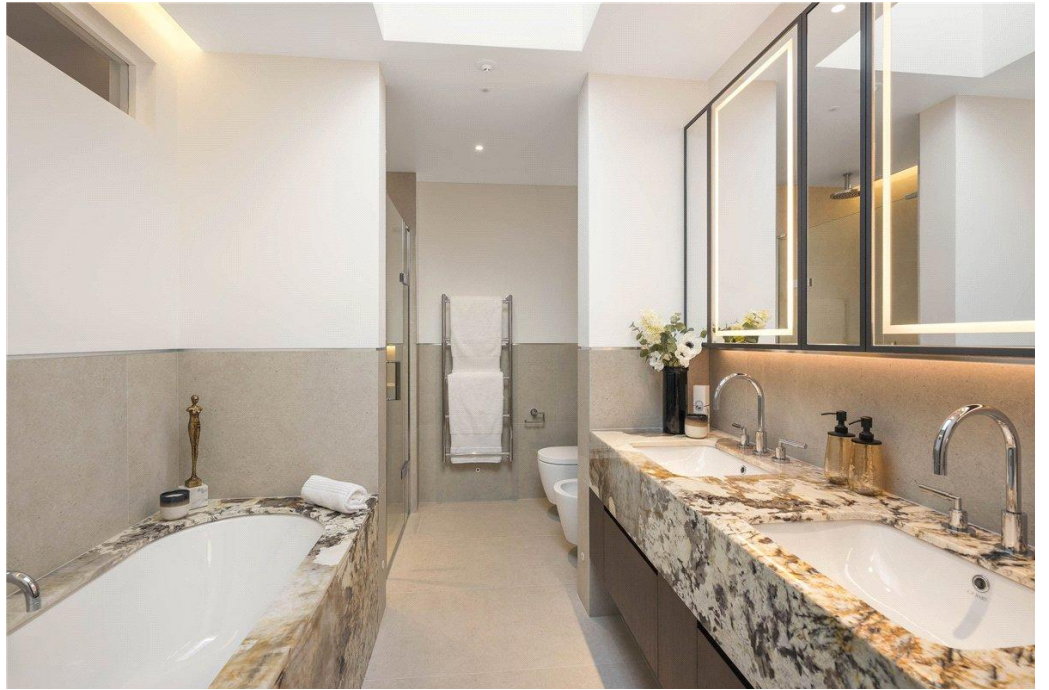
Council Tax: Band TBC (Westminster)

Heating and Hot Water: Gas

Parking: None included with apartment / On street may be available: <https://www.westminster.gov.uk/parking/parking-residents>

Mobile phone coverage and speeds can be checked here: [checker.ofcom.org.uk](http://checker.ofcom.org.uk), however, all providers are predicted to have good levels of service inside at this property. Broadband speeds can be checked here: [checker.ofcom.org.uk](http://checker.ofcom.org.uk).





# Floor Plans

## Six Charles Street, W1J

Approximate Gross Internal Area 1729 sq ft - 160.6 sq m

Key :  
CH - Ceiling Height



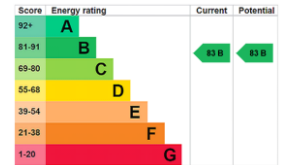
Second Floor



Third Floor

### AMENITIES

- 24/7 Concierge
- Lift Access
- Video Entry
- Banham Security
- Private Garage
- Share of Freehold
- Local Authority - Westminster City Council
- EPC Band B



Mayfair 020 7493 0676

mayfair.sales@carterjonas.co.uk  
18 Davies Street, Mayfair, London, W1K 3DS

carterjonas.co.uk  
Offices throughout the UK

Exclusive UK affiliate of

**CHRISTIE'S**  
INTERNATIONAL REAL ESTATE

### IMPORTANT INFORMATION

These particulars are for general information purposes only and do not represent an offer or contract or part of one. Carter Jonas or anyone in their employment has made every attempt to ensure that the particulars and other information provided are as accurate as possible and they are not intended to amount to advice on which you should rely as being factually accurate. Full information which may be relevant to your decision regarding the property can be found on the property listing on carterjonas.co.uk or, (including off market properties) on the brochure or a separately available material information sheet. We would advise you to confirm the details of any material information prior to any offer being submitted. You should not assume that the property has all necessary planning, building regulations or other consents and Carter Jonas has not tested any services, facilities or equipment. Any measurements and distances given are approximate only. Where Carter Jonas has been provided with a floorplan by a third party, we cannot guarantee that the floorplan has been measured in accordance with IPMS. Purchasers must satisfy themselves of all of the aforementioned by independent inspection or otherwise. Our images only represent part of the property as it appeared at the time they were taken and do not represent the furnishings included; these are confirmed in a separate inventory. If you require further information, please contact us.