



CHAPTER STREET, LONDON, SW1P  
£650,000

Carter Jonas

# CHAPTER STREET, LONDON, SW1P

This beautifully presented first-floor apartment, with lift access, offers generous living space and an abundance of natural light throughout. The property features two spacious double bedrooms, each with fitted wardrobes, and a well-proportioned bathroom with contemporary tiled flooring.

A bright and inviting reception room opens onto a private balcony, perfect for relaxing or entertaining, while the separate fully fitted eat-in kitchen also benefits from its own balcony, adding to the sense of space and versatility. The apartment is finished in a neutral décor with elegant wooden flooring throughout, creating a stylish yet homely feel.

Ideally located in the sought-after area of Pimlico, the property is moments from an array of local shops, cafés, and amenities. The open green spaces of Vincent Square are within easy reach, while excellent transport connections are provided by Pimlico Underground Station (Victoria Line), ensuring swift access across London.

Service Charge: Ask Agent

Ground Rent: Ask Agent

- Heating: Electric (on meter)
- Parking: Garage & Residents Parking. On street may also be available: <https://www.westminster.gov.uk/parking/parking-residents>
- Broadband: ADSL - Up to 21Mbps available. Broadband speeds can be checked here: [checker.ofcom.org.uk](http://checker.ofcom.org.uk).

## AMENITIES

- Two double bedrooms
- Large reception room
- Excellent storage
- Lift
- Wooden flooring throughout
- Eat-in Kitchen
- Two balconies
- Furnished

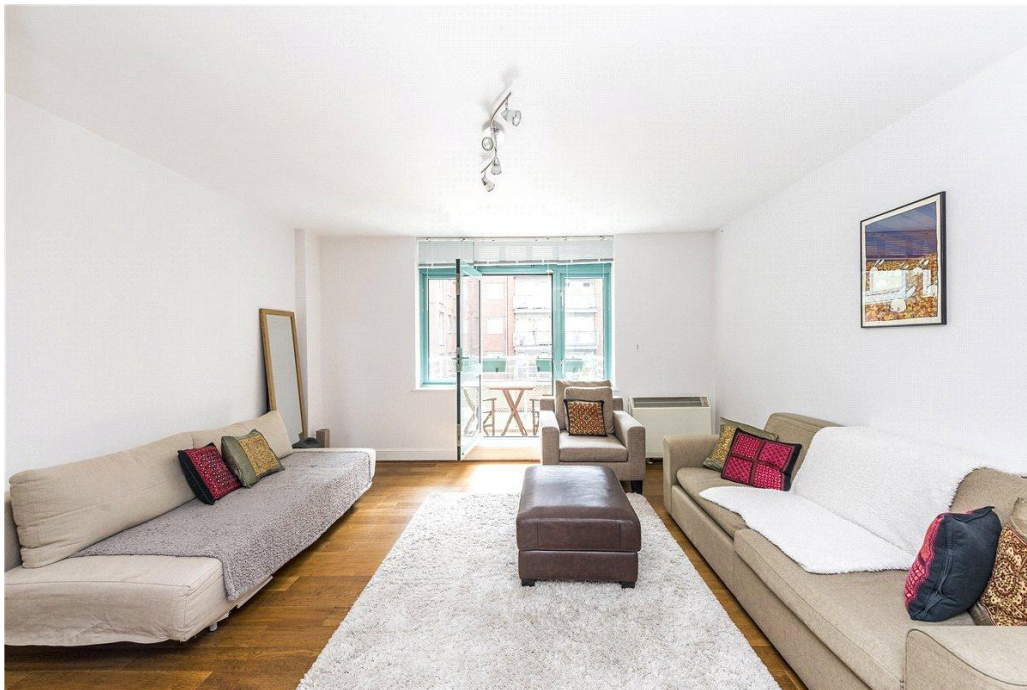
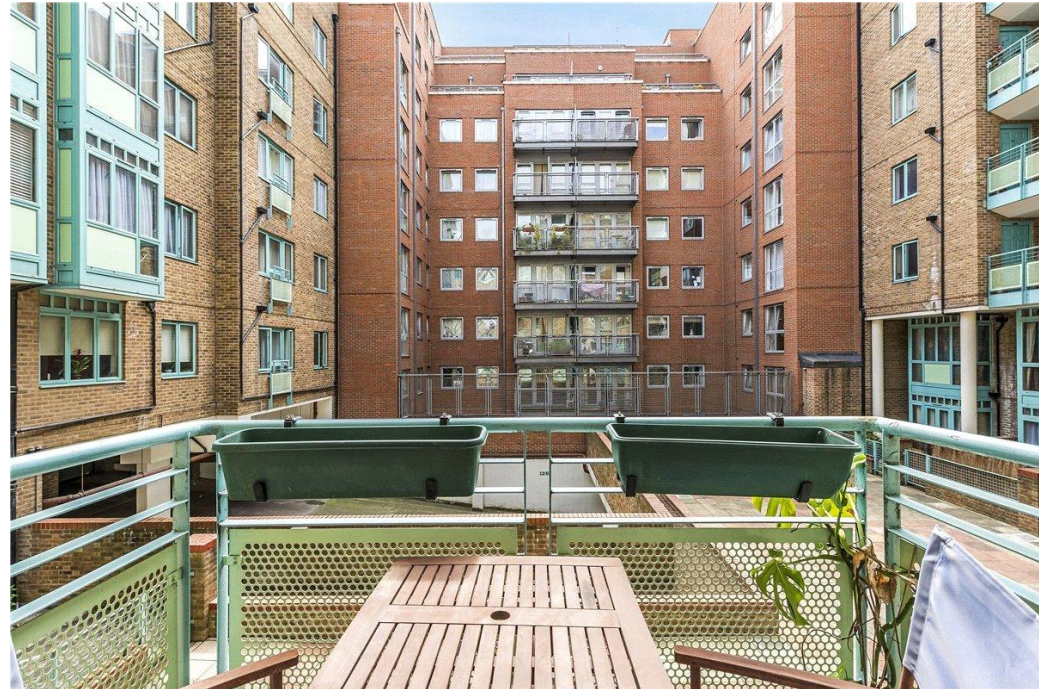
**TENURE** Leasehold – Ask the agent

**LOCAL AUTHORITY** Westminster City Council (Band E)

**EPC BAND C**

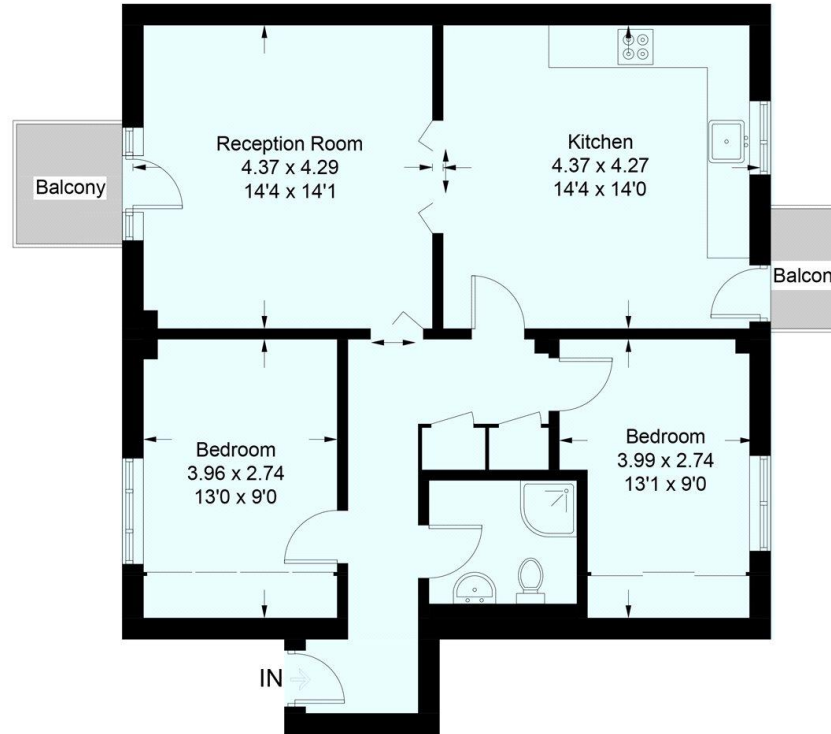
**A BRIGHT AND SPACIOUS TWO DOUBLE BEDROOM APARTMENT PRESENTED IN EXCELLENT CONDITION THROUGHOUT AND SITUATED ON THE 1ST FLOOR OF A MODERN BLOCK WITHIN CLOSE PROXIMITY OF VICTORIA AND PIMLICO.**





# Chapter Street, SW1P

Approximate Gross Internal Area = 74.8 sq m / 805 sq ft



**First Floor**

Score	Energy rating	Current	Potential
92+	A		
81-91	B		
69-80	C	80 C	83 B
55-68	D		
39-54	E		
21-38	F		
1-20	G		

This plan is for layout guidance only. Not drawn to scale unless stated. Windows and door openings are approximate. Whilst every care is taken in the preparation of this plan, please check all dimensions, shapes and compass bearings before making any decisions reliant upon them. (ID342107)

**Mayfair 020 7493 0676**

mayfair.sales@carterjonas.co.uk  
18 Davies Street, Mayfair, London, W1K 3DS

**carterjonas.co.uk**  
Offices throughout the UK

*Exclusive UK affiliate of*

**CHRISTIE'S**  
INTERNATIONAL REAL ESTATE

**IMPORTANT INFORMATION**

These particulars are for general information purposes only and do not represent an offer or contract or part of one. Carter Jonas or anyone in their employment has made every attempt to ensure that the particulars and other information provided are as accurate as possible and they are not intended to amount to advice on which you should rely as being factually accurate. Full information which may be relevant to your decision regarding the property can be found on the property listing on carterjonas.co.uk or, (including off market properties) on the brochure or a separately available material information sheet. We would advise you to confirm the details of any material information prior to any offer being submitted. You should not assume that the property has all necessary planning, building regulations or other consents and Carter Jonas has not tested any services, facilities or equipment. Any measurements and distances given are approximate only. Where Carter Jonas has been provided with a floorplan by a third party, we cannot guarantee that the floorplan has been measured in accordance with IPMS. Purchasers must satisfy themselves of all of the aforementioned by independent inspection or otherwise. Our images only represent part of the property as it appeared at the time they were taken and do not represent the furnishings included; these are confirmed in a separate inventory. If you require further information, please contact us.