



WILLIAM MEWS, BELGRAVIA, SW1X

£1,211.54 per week*

Carter Jonas

FLAT 6, WHADDON HOUSE, WILLIAM MEWS, BELGRAVIA, LONDON, SW1X 9HG

- 3 Bedrooms
- 2 Bathrooms
- Large Reception Room
- Upper floor with lift
- Parking space available
- Porter
- Balcony
- Furnished or Unfurnished

THE PROPERTY

Neutrally decorated, this flat has it all, a spacious balcony, secure parking space, portering and central prime location. Ready to move into.

Whaddon House is in William Mews - a private mews that runs east off Lowndes Square, moments away from Hyde Park Corner, Harvey Nichols and Sloane Street.

Large reception with west-facing balcony, separate fully fitted kitchen, 2 double bedrooms, 1 single bedroom/study, 2 bathrooms (1 en-suite). Secure off-street parking space for 1 car. Porter. Lift. Furnished.

AST

The deposit will be £7,269.24 at a rental value of £1,211.54 (asking price)

Holding deposit = 1 week's rent of £1,211.54

Deposit is 6 weeks rent (£1,211.54 pw = £7,269.24 deposit)

Newly refurbished three bedroom second floor apartment situated in this well run portered block close to Motcomb Street.



ADDITIONAL INFORMATION

Offers Available for a minimum term of 12 months longer terms will be considered

Viewing Strictly by appointment

Local Authority Westminster City Council - Council Tax Band G

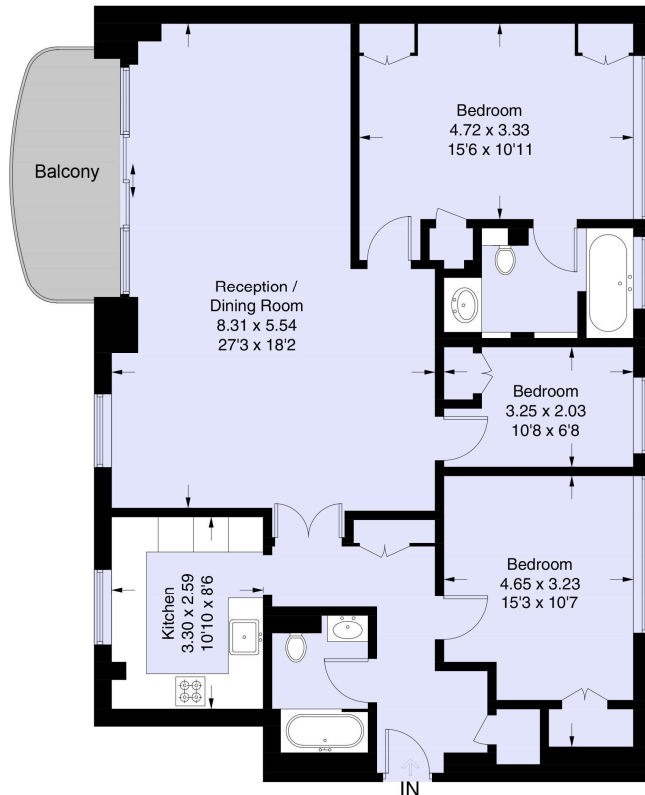
- Heating & Hot Water - Mains Gas
- No Parking included with the apartment.
- Mobile phone coverage and speeds can be checked here: checker.ofcom.org.uk, however, all providers are predicted to have good levels of service inside at this property.
- Copper Broadband. Broadband speeds can be checked here: checker.ofcom.org.uk.
- Local Authority: Westminster City Council (Band G)
- *CGI Furniture

Score	Energy rating	Current	Potential
92+	A		
81-91	B		
69-80	C	75 C	83 B
55-68	D		
39-54	E		
21-38	F		
1-20	G		



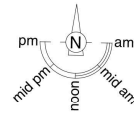
Whaddon House, SW1X

Approximate Floor Area = 110.6 sq m / 1190 sq ft sq ft
Including Limited Use Area (2.6 sq m / 28 sq ft)



Second Floor

This marketing plan is for layout guidance only. Not drawn to scale unless stated. Windows and door openings are approximate. Whilst every care is taken in the preparation of this plan, please check all dimensions, shapes and compass bearings before making any decisions reliant upon them.



Carter Jonas

T: 020 7493 0676

18 Davies Street, Mayfair, London, W1K 3DS

E: mayfair.lettings@carterjonas.co.uk



Exclusive UK affiliate of

CHRISTIE'S

INTERNATIONAL REAL ESTATE

Classification L2 - Business Data



IMPORTANT INFORMATION

These particulars are for general information purposes only and do not represent an offer or contract or part of one. Carter Jonas or anyone in their employment has made every attempt to ensure that the particulars and other information provided are as accurate as possible and they are not intended to amount to advice on which you should rely as being factually accurate. Full information which may be relevant to your decision regarding the property can be found on the property listing on carterjonas.co.uk or a separately available material information sheet, and we would advise you to confirm the details of any material information prior to any offer being submitted. You should not assume that the property has all necessary planning, building regulations or other consents and Carter Jonas has not tested any services, facilities, or equipment. Any measurements and distances given are approximate only. Where Carter Jonas has been provided with a floorplan by a third party, we cannot guarantee that the floorplan has been measured in accordance with IPMS. Purchasers or prospective tenants must satisfy themselves of all of the aforementioned by independent inspection or otherwise. Our images only represent part of the property as it appeared at the time they were taken and do not represent the furnishings included; these are confirmed in a separate inventory. If you require further information, please contact us. *Administration fees may apply depending on tenancy type. Please contact your local branch for this information.