



**STAFFORD COURT, KENSINGTON HIGH STREET, W8**

£1,200 per week\*

**Carter Jonas**

---

# FLAT 89, STAFFORD COURT, KENSINGTON HIGH STREET, LONDON, W8 7DP

A two bedroom apartment of approximately 775 square feet

- Furnished
- 2 Bedrooms
- 1 Reception room
- 1 Kitchen
- 1 Bathroom
- 1 Guest WC

## LOCATION

Situated in the heart of Prime Central London, the eternally popular Kensington offers everything the discerning Londoner may wish for. The shops, bars and restaurants of High Street Kensington are second to none and its proximity to Hyde Park means that residents experience the best of both worlds. Nearest tube: High Street Kensington

## THE PROPERTY

This well presented apartment is situated on the second floor of this well maintained and secure portered building with lift located on Kensington High Street and within walking distance of Holland Park. Central heating and hot water are inclusive of the rent.

## AST

The deposit will be £6,000 at a rental value of £1,200 (asking price).

Holding deposit = 1 weeks rent of £1,200

Deposit is 5 weeks rent (£1,200 pw = £6,000 deposit)

## ADDITIONAL INFORMATION

Heating and Hot Water - Community Scheme

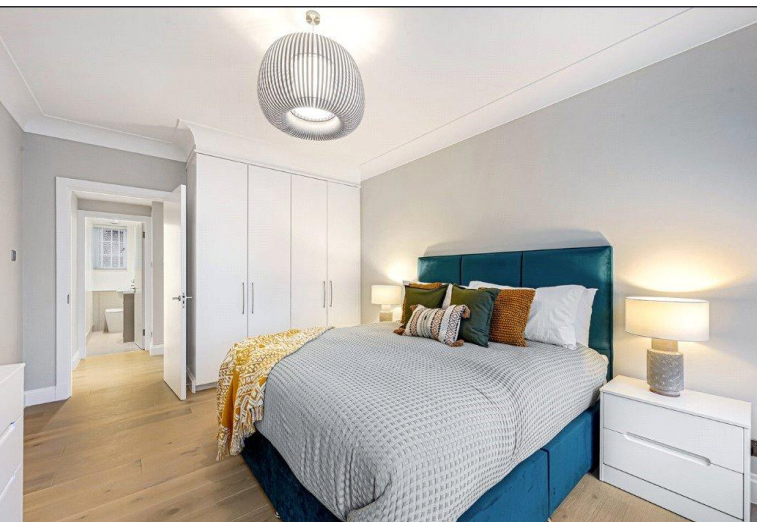
No Parking included with the apartment.



Mobile phone coverage and speeds can be checked here: [checker.ofcom.org.uk](http://checker.ofcom.org.uk), however, all providers are predicted to have good levels of service inside at this property.

FTC & ADSL Broadband available and mobile coverage available. Ultra Fast Broadband may be available. Broadband speeds can be checked here: [checker.ofcom.org.uk](http://checker.ofcom.org.uk).

|                 |   |
|-----------------|---|
| Offers          | Available for a minimum term of 12 months longer terms will be considered |
| Viewing         | Strictly by appointment   |
| Local Authority | Kensington & Chelsea Borough Council - Council Tax Band F                 |

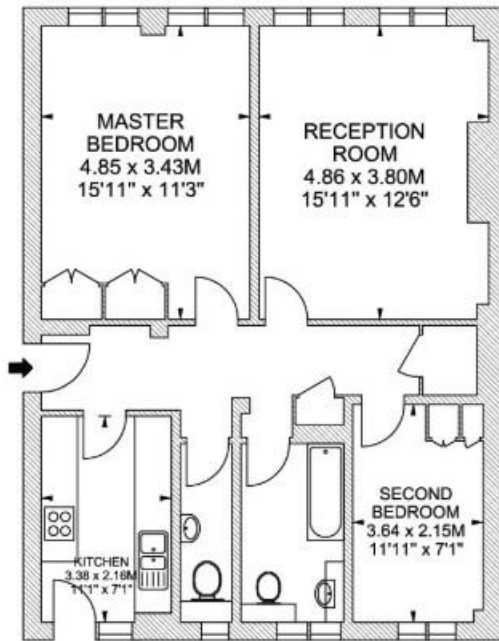


Flat 89  
Second Floor  
Stafford Court,  
Kensington High Street ,W8

Approximate gross internal area  
72 sq m / 775 sq ft



Phillimore Walk



Scale 1:75

Scale floor plans produced by Mays Floorplans © . Tel 020 3397 4594  
All measurements are maximum, and include wardrobes and window bays where applicable



| Energy Efficiency Rating                    |   | Current                 | Potential |
|---|---|-------------------------|-----------|
| Very energy efficient - lower running costs |   |                         |           |
| (92-100)                                    | A |                         |           |
| (81-91)                                     | B |                         |           |
| (69-80)                                     | C | 79                      | 83        |
| (55-68)                                     | D |                         |           |
| (39-54)                                     | E |                         |           |
| (21-38)                                     | F |                         |           |
| (1-20)                                      | G |                         |           |
| Not energy efficient - higher running costs |   |                         |           |
| England, Scotland & Wales                   |   | EU Directive 2002/91/EC |           |

T: 020 7493 0676

18 Davies Street, Mayfair, London, W1K 3DS

E: mayfair@carterjonas.co.uk



Exclusive UK affiliate of

**CHRISTIE'S**  
INTERNATIONAL REAL ESTATE

Classification L2 - Business Data

**IMPORTANT INFORMATION**

These particulars are for general information purposes only and do not represent an offer or contract or part of one. Carter Jonas or anyone in their employment has made every attempt to ensure that the particulars and other information provided are as accurate as possible and they are not intended to amount to advice on which you should rely as being factually accurate. Full information which may be relevant to your decision regarding the property can be found on the property listing on [carterjonas.co.uk](http://carterjonas.co.uk) or a separately available material information sheet, and we would advise you to confirm the details of any material information prior to any offer being submitted. You should not assume that the property has all necessary planning, building regulations or other consents and Carter Jonas has not tested any services, facilities, or equipment. Any measurements and distances given are approximate only. Where Carter Jonas has been provided with a floorplan by a third party, we cannot guarantee that the floorplan has been measured in accordance with IPMS. Purchasers or prospective tenants must satisfy themselves of all of the aforementioned by independent inspection or otherwise. Our images only represent part of the property as it appeared at the time they were taken and do not represent the furnishings included; these are confirmed in a separate inventory. If you require further information, please contact us. \*Administration fees may apply depending on tenancy type. Please contact your local branch for this information.