



**GROSVENOR SQUARE, MAYFAIR, W1K**

£4,600 per week\*

**Carter Jonas**

# GROSVENOR SQUARE, MAYFAIR, LONDON, W1K

- 4 Bedrooms
- 3 bathrooms (one en-suite)
- Double Reception Room
- Kitchen/Breakfast Room
  - Guest W/C
  - Utility Room
  - High Ceilings
  - 24hr Concierge
- Furnished/Unfurnished
  - Lift Access
- Outside space / communal garden

This beautiful and vast lateral apartment is situated over the first floor of a prestigious building centrally located in the heart of Mayfair. The apartment has been finished and newly re-furnished to a high standard and has the benefit of 24 hour concierge, a communal courtyard and views down South Audley Street.

Mayfair is London's most fashionable destination. With London's finest buildings, largest concentration of luxury hotels, best restaurants, bars, shopping, open spaces and hidden treasures all nestled together in a beautiful village setting.

Nearest Tube: Bond Street / Marble Arch

NHA

The deposit will be £27,600 at a rental value of £4,600 (asking price).

Holding deposit = 1 weeks rent of £4,600

Deposit is 6 weeks rent (£4,600 pw = £27,600 deposit)

Minimum Term 12 months

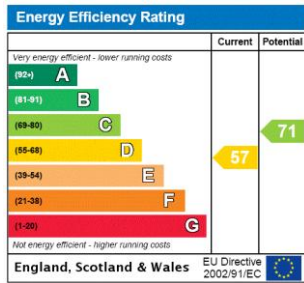
Council Tax Band H

Heating and hot water included within the rent.

Direct fibre broadband provided on a complimentary basis.

Spacious four bedroom apartment of approximately 2,300 square feet benefiting from 24hr concierge.





## ADDITIONAL INFORMATION

**Offers** Available for a minimum term of 12 months longer terms will be considered

**Viewing** Strictly by appointment

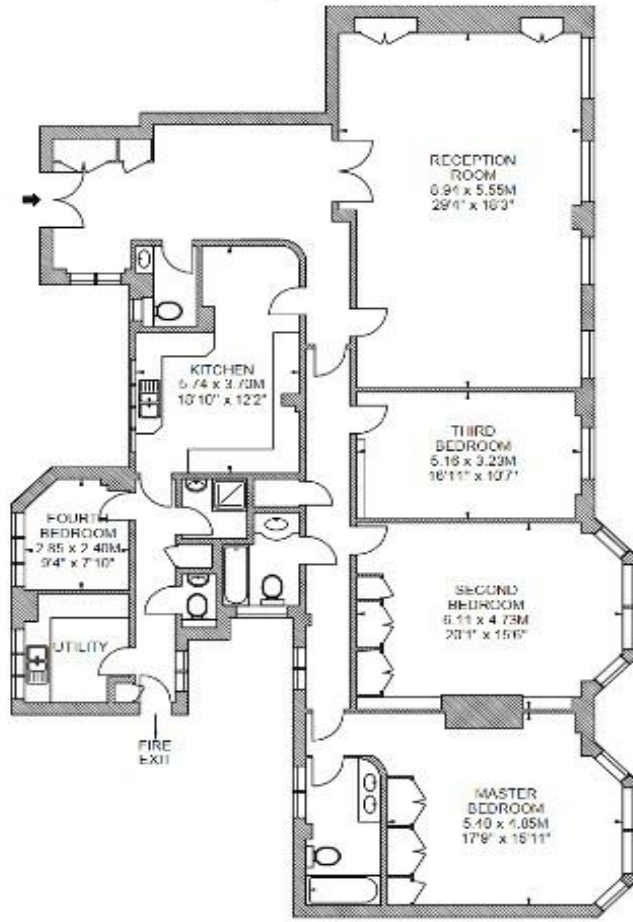
**Local Authority** Westminster County Council - Council Tax Band H

**Directions**



**Flat 18  
First Floor  
Grosvenor Square, W1**

Approximate gross internal area  
214 sq m / 2304 sq ft



South  
Audley  
Street

Grosvenor Square

Scale: 1:125

Scale floor plans produced by Mays Floorplans © Tel: 020 3897 4594

All measurements are maximum, and include wardrobes and window bays where applicable.



**T: 020 7493 0676**

18 Davies Street, Mayfair, London, W1K 3DS

E: [mayfair@carterjonas.co.uk](mailto:mayfair@carterjonas.co.uk)

*Exclusive UK affiliate of*

**CHRISTIE'S**  
INTERNATIONAL REAL ESTATE



**IMPORTANT INFORMATION**

These particulars are for general information purposes only and do not represent an offer or contract or part of one. Carter Jonas or anyone in their employment has made every attempt to ensure that the particulars and other information provided are as accurate as possible and they are not intended to amount to advice on which you should rely as being factually accurate. Full information which may be relevant to your decision regarding the property can be found on the property listing on [carterjonas.co.uk](http://carterjonas.co.uk) or a separately available material information sheet, and we would advise you to confirm the details of any material information prior to any offer being submitted. You should not assume that the property has all necessary planning, building regulations or other consents and Carter Jonas has not tested any services, facilities, or equipment. Any measurements and distances given are approximate only. Where Carter Jonas has been provided with a floorplan by a third party, we cannot guarantee that the floorplan has been measured in accordance with IPMS. Purchasers or prospective tenants must satisfy themselves of all of the aforementioned by independent inspection or otherwise. Our images only represent part of the property as it appeared at the time they were taken and do not represent the furnishings included; these are confirmed in a separate inventory. If you require further information, please contact us. \*Administration fees may apply depending on tenancy type. Please contact your local branch for this information.