



**GLOUCESTER PLACE, MARYLEBONE, W1U**  
£1,495 per week\*

**Carter Jonas**



## **BASEMENT FLAT, GLOUCESTER PLACE, MARYLEBONE, LONDON, W1U 6HT**

- Fully refurbished
- Modern fittings
- Three bedrooms
- Open plan reception room
- Three bathrooms

### **THE PROPERTY**

The property benefits from an open plan reception room with dining area, stylish kitchen, three bedrooms all with en suite bathrooms or shower rooms.

The property has been finished to a high specification with plenty of built in storage.

There is a full decked private garden area accessed via the reception or smallest bedroom.

The property is offered furnished and is available now for long term rental (minimum term 12-months)

Holding deposit is 1 week's rent = £1,495 (at asking price)

Security deposit is 6 week's rent = £8,970 (at asking price £1,495pw)

Minimum Term 12 months

Council Tax Band E

For the latest information on broadband and mobile coverage, please visit [checker.ofcom](https://checker.ofcom.gov.uk/) for the most up-to-date details.

Gloucester Place is ideally situated for the retail and entertainment options in Marylebone and St. Johns Wood, all of which are only 0.7 miles away, as well as the natural areas of close-by Regent's Park. It is situated just north of Dorset Square (approximately 320 meters). Marylebone Station, which serves the Jubilee, Bakerloo, Metropolitan, Circle, Hammersmith, and City lines, is conveniently situated (approximately 0.2 miles away), as is Baker Street Underground Station.

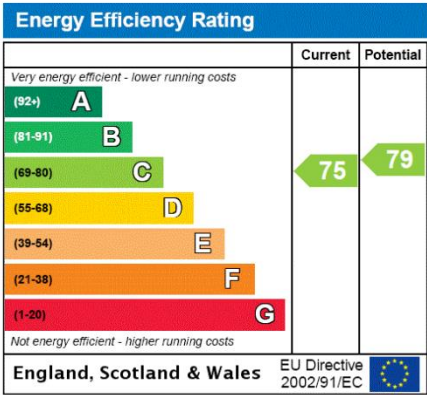
## **This fully refurbished three-bedroom garden flat is situated within a charming period conversion within Marylebone.**





# ADDITIONAL INFORMATION

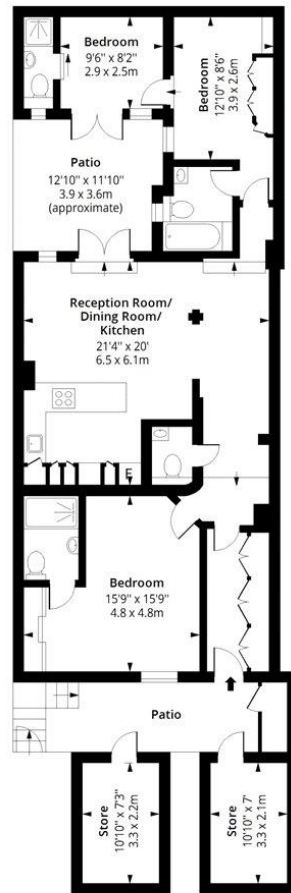
Offers	Available for a minimum term of 12 months longer terms will be considered
Viewing	Strictly by appointment
Local Authority	Westminster City Council - Council Tax Band E





# Gloucester Place, W1U

Approx. Gross Internal Area 1111 Sq Ft - 103.21 Sq M



**Lower Ground Floor**  
Floor Area 1111 Sq Ft - 103.21 Sq M

Floor plan is for illustrative purposes only and is not to scale. Every attempt has been made to ensure the accuracy of the floor plan shown, however all measurements, fixtures, fittings and data shown are an approximate interpretation for illustrative purposes only.  
lpaplus.com

**T: 020 7486 8866**  
37 New Cavendish Street, London, W1G 9TL  
E: marylebone.lettings@carterjonas.co.uk



*Exclusive UK affiliate of*  
**CHRISTIE'S**  
INTERNATIONAL REAL ESTATE

Classification L2 - Business Data



## IMPORTANT INFORMATION

These particulars are for general information purposes only and do not represent an offer or contract or part of one. Carter Jonas or anyone in their employment has made every attempt to ensure that the particulars and other information provided are as accurate as possible and they are not intended to amount to advice on which you should rely as being factually accurate. Full information which may be relevant to your decision regarding the property can be found on the property listing on [carterjonas.co.uk](http://carterjonas.co.uk) or a separately available material information sheet, and we would advise you to confirm the details of any material information prior to any offer being submitted. You should not assume that the property has all necessary planning, building regulations or other consents and Carter Jonas has not tested any services, facilities, or equipment. Any measurements and distances given are approximate only. Where Carter Jonas has been provided with a floorplan by a third party, we cannot guarantee that the floorplan has been measured in accordance with IPMS. Purchasers or prospective tenants must satisfy themselves of all of the aforementioned by independent inspection or otherwise. Our images only represent part of the property as it appeared at the time they were taken and do not represent the furnishings included; these are confirmed in a separate inventory. If you require further information, please contact us. \*Administration fees may apply depending on tenancy type. Please contact your local branch for this information.