



BAKER STREET, LONDON, NW1
£1,650 per week*

Carter Jonas

FLAT 27, CHILTERN COURT, BAKER STREET, LONDON, NW1 5SZ

- 4 Bedrooms
- 4 Bathrooms
- 1 Reception room
- Kitchen
- Second Floor

THE PROPERTY

A modern second-floor flat featuring four bedrooms, four bathrooms, and a spacious reception room. The kitchen is equipped for convenience, complemented by wooden floors throughout. With a contemporary design, this residence offers ample space and comfort for a stylish urban lifestyle.

Holding deposit is 1 week's rent = £1,650 (at asking price)

Security deposit is 6 week's rent = £9,900 (at asking price £1,650pw)

Minimum term 12 months

Council Tax Band G

Baker Street in London is a charming thoroughfare known for its elegant Georgian buildings and bustling atmosphere. Famous as the residence of the fictional detective Sherlock Holmes, the street offers a mix of historic charm and modern amenities. Visitors can explore the various shops, cafes, and cultural attractions that line its cobblestone sidewalks, immersing themselves in the vibrant energy of this iconic London neighbourhood. The closest train stations are Baker Street Station, located approximately 0.3 miles away, and Edgware Road Station, situated around 0.6 miles away.

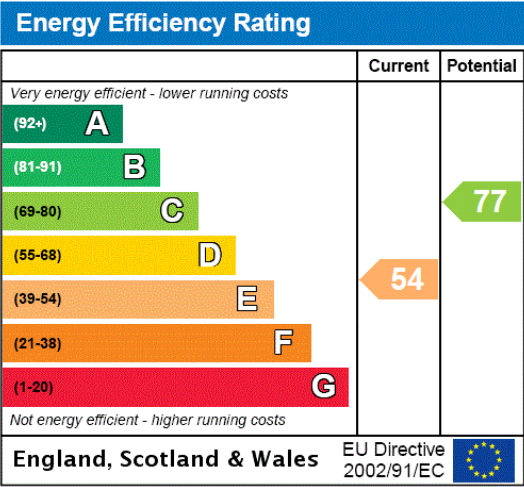
Residents of Westminster housing estates may also request a resident permit for zones A – G. For eligibility for resident parking permits, please refer to the <https://www.westminster.gov.uk/parking> website for further details.

A spacious second-floor residence with four bedrooms, four bathrooms, a reception room, and a kitchen, offering comfortable living quarters.



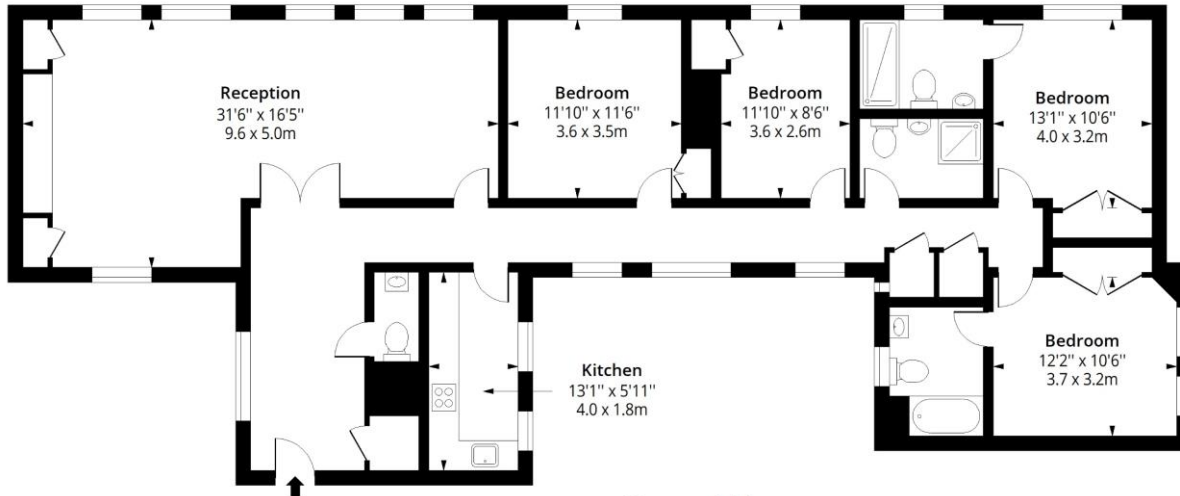
ADDITIONAL INFORMATION

Offers	Available for a minimum term of 12 months longer terms will be considered
Viewing	Strictly by appointment
Local Authority	Westminster City Council - Council Tax Band G



Chiltern Court, NW1

Approx. Gross Internal Area 1664 Sq Ft - 154.59 Sq M



Second Floor

Floor Area 1664 Sq Ft - 154.59 Sq M



Measured according to RICS IPMS2. Floor plan is for illustrative purposes only and is not to scale. Every attempt has been made to ensure the accuracy of the floor plan shown, however all measurements, fixtures, fittings and data shown are an approximate interpretation for illustrative purposes only. 1 sq m = 10.76 sq feet.

lpaplus.com

Date: 21/2/2024



IMPORTANT INFORMATION

These particulars are for general information purposes only and do not represent an offer or contract or part of one. Carter Jonas or anyone in their employment has made every attempt to ensure that the particulars and other information provided are as accurate as possible and they are not intended to amount to advice on which you should rely as being factually accurate. Full information which may be relevant to your decision regarding the property can be found on the property listing on carterjonas.co.uk or a separately available material information sheet, and we would advise you to confirm the details of any material information prior to any offer being submitted. You should not assume that the property has all necessary planning, building regulations or other consents and Carter Jonas has not tested any services, facilities, or equipment. Any measurements and distances given are approximate only. Where Carter Jonas has been provided with a floorplan by a third party, we cannot guarantee that the floorplan has been measured in accordance with IPMS. Purchasers or prospective tenants must satisfy themselves of all of the aforementioned by independent inspection or otherwise. Our images only represent part of the property as it appeared at the time they were taken and do not represent the furnishings included; these are confirmed in a separate inventory. If you require further information, please contact us. *Administration fees may apply depending on tenancy type. Please contact your local branch for this information.

T: 020 7486 8866

37 New Cavendish Street, London, W1G 9TL

E: marylebone@carterjonas.co.uk

A member of



Exclusive UK affiliate of

CHRISTIE'S
INTERNATIONAL REAL ESTATE

Classification L2 - Business Data