



ST CHRISTOPHER'S PLACE, LONDON, W1U
£775 per week*

Carter Jonas

FLAT 47 ST CHRISTOPHER'S HOUSE, ST CHRISTOPHER'S PLACE, LONDON, W1U 1NZ

- One Reception Room
- Two Double Bedrooms
- Fully Fitted Kitchen
- One Bathroom with a bathtub/shower
- Upper Floor with Lift
- Fully Furnished
- Located within easy access of Bond Street
- Plus £100 for services per week (gas, electricity, water and internet)

THE PROPERTY

Modern two-bedroom apartment fully furnished and located moments from amenities of Oxford Street and St Christopher's Place.

St Christopher's Place London, located near Oxford Street and a 1-minute walk away from Bond Street station, is an excellent alternative for both business and pleasure travellers. It has long been a beloved location among Londoners and is nestled between Oxford Street and Marylebone. As a social hub, St Christopher's Place provides various amenities, such as morning coffee stops, outdoor all-day dining, high street favourites, and independent brands.

The flat is offered fully furnished.

£775 plus £100 for services per week (gas, electricity, water and internet).

Services also include 24 hour heating/hot water and air conditioned bedrooms.

Holding deposit is 1 week's rent = £775 (at asking price)

Security deposit is 5 week's rent = £3,875 (at asking price £775pw)

Smart furnished 2-bedroom, 2-bathroom apartment on an upper floor (with lift).



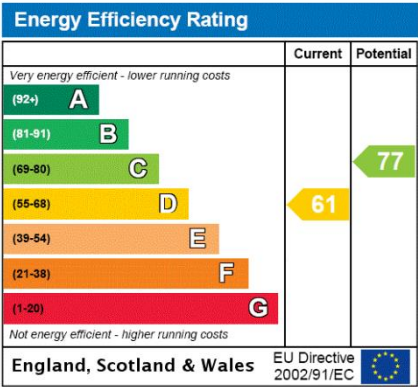
Minimum term 12 months

Council Tax Band G

For the latest information on broadband and mobile coverage, please visit [/checker.ofcom](http://checker.ofcom) for the most up-to-date details.

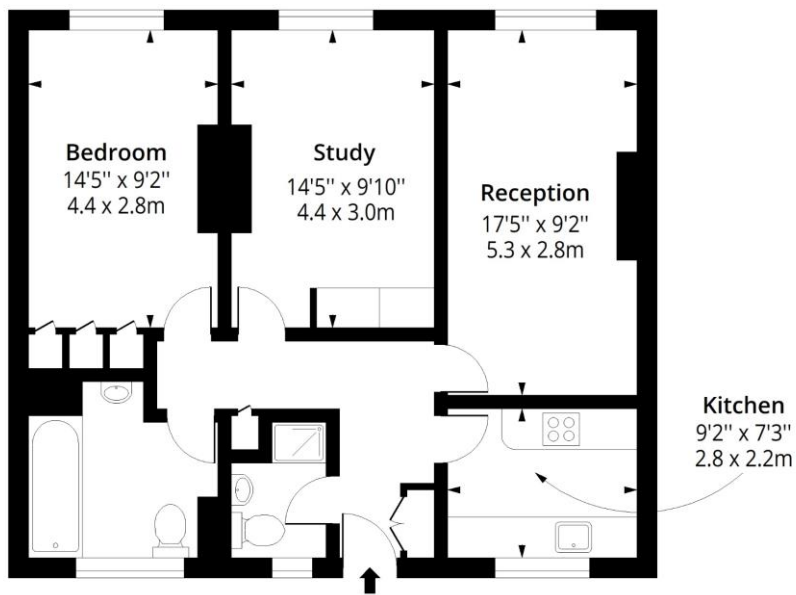
ADDITIONAL INFORMATION

Offers	Available for a minimum term of 12 months longer terms will be considered
Viewing	Strictly by appointment
Local Authority	Westminster City Council - Council Tax Band G



St. Christophers House, W1U

Approx. Gross Internal Area 756 Sq Ft - 70.23 Sq M



Floor Area 756 Sq Ft - 70.23 Sq M



Measured according to RICS IPMS2. Floor plan is for illustrative purposes only and is not to scale. Every attempt has been made to ensure the accuracy of the floor plan shown, however all measurements, fixtures, fittings and data shown are an approximate interpretation for illustrative purposes only. 1 sq m = 10.76 sq feet.

lpaplus.com

Date: 24/11/2023



IMPORTANT INFORMATION

These particulars are for general information purposes only and do not represent an offer or contract or part of one. Carter Jonas or anyone in their employment has made every attempt to ensure that the particulars and other information provided are as accurate as possible and they are not intended to amount to advice on which you should rely as being factually accurate. Full information which may be relevant to your decision regarding the property can be found on the property listing on carterjonas.co.uk or a separately available material information sheet, and we would advise you to confirm the details of any material information prior to any offer being submitted. You should not assume that the property has all necessary planning, building regulations or other consents and Carter Jonas has not tested any services, facilities, or equipment. Any measurements and distances given are approximate only. Where Carter Jonas has been provided with a floorplan by a third party, we cannot guarantee that the floorplan has been measured in accordance with IPMS. Purchasers or prospective tenants must satisfy themselves of all of the aforementioned by independent inspection or otherwise. Our images only represent part of the property as it appeared at the time they were taken and do not represent the furnishings included; these are confirmed in a separate inventory. If you require further information, please contact us. *Administration fees may apply depending on tenancy type. Please contact your local branch for this information.

T: 020 7486 8866

37 New Cavendish Street, London, W1G 9TL

E: marylebone.lettings@carterjonas.co.uk

A member of



Exclusive UK affiliate of

CHRISTIE'S
INTERNATIONAL REAL ESTATE

Classification L2 - Business Data