



**ST. CHRISTOPHER'S PLACE, MARYLEBONE, W1U**  
£630 per week\*

**Carter Jonas**



## **FLAT 24 GREENGARDEN HOUSE, ST. CHRISTOPHER'S PLACE, MARYLEBONE, W1U 1NL**

- Spacious Living Area
- Fully Fitted Kitchen
- Double Bedroom
- One Bathroom
- Upper Floor with Lift
- Fully Furnished
- Located with easy access of Bond Street
- Plus £75 for services per week (gas, electricity, water and internet)

### **THE PROPERTY**

Each of these luxury apartments has a private entrance, hallway, fully-equipped modern kitchen, sitting room with dining area and desk, bathroom and double bedroom.

All the apartments have double glazing throughout and full controllable air-conditioning in all bedrooms.

The flat is offered fully furnished including Smart TV.

£630 per week plus £75 for services per week (gas, electricity, water and internet).

Services also include 24 hour heating/hot water and air conditioned bedrooms.

Holding deposit is 1 week's rent = £630 (at asking price)

Security deposit is 5 week's rent = £3150 (at asking price £630pw)

Minimum term - 12 months

For the latest information on broadband and mobile coverage, please visit [/checker.ofcom](http://checker.ofcom) for the most up-to-date details.

Spacious & homely one bedroom furnished apartment, stylishly decorated to a high standard, in prime location close to Oxford Street & all the amenities of Marylebone.





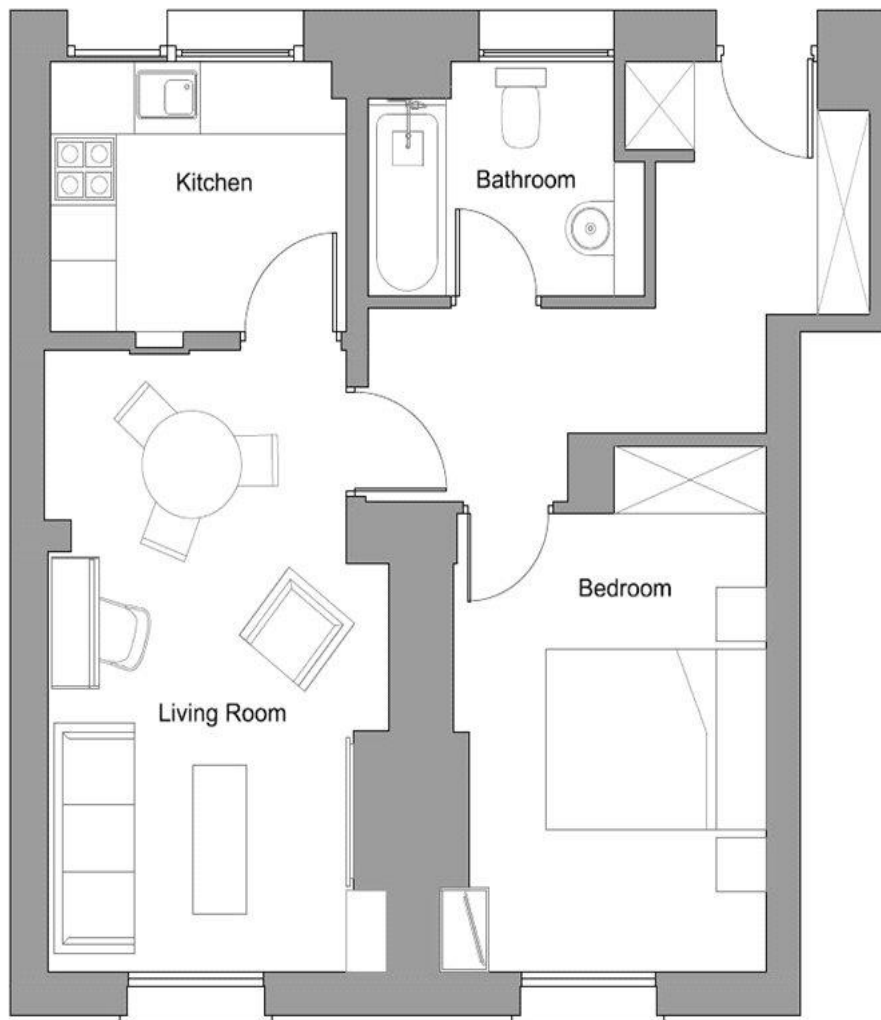
**LOCATION**

St Christopher's Place London, located near Oxford Street and a 1-minute walk away from Bond Street station, is an excellent alternative for both business and pleasure travellers. It has long been a beloved location among Londoners and is nestled between Oxford Street and Marylebone. As a social hub, St Christopher's Place provides various amenities, such as morning coffee stops, outdoor all-day dining, high street favourites, and independent brands.

**ADDITIONAL INFORMATION**

Offers	Available for a minimum term of 12 months longer terms will be considered
Viewing	Strictly by appointment
Local Authority	Westminster City Council - Council Tax Band F





51 sqm / 550 sqft

Notes:  
• All dimensions to be checked on site  
• Areas based on manual site survey



Rev A 08.03.2018 For Client Comments  
02.03.2018 For Client Comments  
Rev Date Description  
Title Apartment 4  
Marketing Plans  
Job 16018 Greengarden House  
& St Christopher's House  
Scale 1:50 @ A4  
Date February 2018  
Dm MC  
Ctk LB  
Dwg No 05  
Rev A  
©

**Gallus Studio**  
55a Rochester Place +44 (0) 20 7482 3997  
London NW1 9JX www.gallus-studio.com

Energy Efficiency Rating		
	Current	Potential
Very energy efficient - lower running costs		
(92+) <b>A</b>		
(81-91) <b>B</b>		
(69-80) <b>C</b>		
(55-68) <b>D</b>		
(39-54) <b>E</b>	50	65
(21-38) <b>F</b>		
(1-20) <b>G</b>		
Not energy efficient - higher running costs		
England, Scotland & Wales		EU Directive 2002/91/EC

**T: 020 7486 8866**

37 New Cavendish Street, London, W1G 9TL

E: marylebone.lettings@carterjonas.co.uk



*Exclusive UK affiliate of*

**CHRISTIE'S**  
INTERNATIONAL REAL ESTATE

#### IMPORTANT INFORMATION

These particulars are for general information purposes only and do not represent an offer or contract or part of one. Carter Jonas or anyone in their employment has made every attempt to ensure that the particulars and other information provided are as accurate as possible and they are not intended to amount to advice on which you should rely as being factually accurate. Full information which may be relevant to your decision regarding the property can be found on the property listing on [carterjonas.co.uk](http://carterjonas.co.uk) or a separately available material information sheet, and we would advise you to confirm the details of any material information prior to any offer being submitted. You should not assume that the property has all necessary planning, building regulations or other consents and Carter Jonas has not tested any services, facilities, or equipment. Any measurements and distances given are approximate only. Where Carter Jonas has been provided with a floorplan by a third party, we cannot guarantee that the floorplan has been measured in accordance with IPMS. Purchasers or prospective tenants must satisfy themselves of all of the aforementioned by independent inspection or otherwise. Our images only represent part of the property as it appeared at the time they were taken and do not represent the furnishings included; these are confirmed in a separate inventory. If you require further information, please contact us. \*Administration fees may apply depending on tenancy type. Please contact your local branch for this information.