



**GREAT CUMBERLAND PLACE, MARYLEBONE, W1H**  
£920 per week\*

**Carter Jonas**

## FLAT 1, GREAT CUMBERLAND PLACE, MARYLEBONE, LONDON, W1H 7TB

- Complimentary membership to Portman Concierge.
- Professionally managed The Portman Estate.
- Contemporary two-bedroom apartment
- Two bathrooms
- Large kitchen
- Bright reception room
- Study room
- Unfurnished basis, or furnished (at separate cost)

### THE PROPERTY

This bright and contemporary two-bedroom, two-bathroom apartment is situated on the top floor of a period building with a lift, providing spacious accommodations ideal for entertaining. It features a modern eat-in kitchen, a large reception room that leads to a dining/study area, two double bedrooms—one of which is en-suite—and an additional bathroom, all in a superb location just moments from Marble Arch, Hyde Park, and Oxford Street.

Great Cumberland Place is in London City Centre, a walkable location with fantastic shopping with Oxford Street in proximity. Cultural landmarks including the British Museum and Natural History Museum are close by and accessible by rail. The distance between Bond Street Underground Station and Marble Arch Tube Station approximately 9-minute walk.

The Portman Estate is a prestigious property portfolio located in the heart of central London, covering 110 acres of prime real estate in Marylebone. Renting through The Portman Estate comes with the advantage of an in-house property management team, providing responsive, hands-on service to ensure residents' needs are met quickly and efficiently. This dedicated team helps maintain the quality of living, handling everything from routine maintenance to emergency repairs, making the rental experience hassle-free.

The property is professionally managed The Portman Estate.

Available for long term rental on an unfurnished basis, or furnished (at separate cost)

Two-bedroom, two bathroom apartment on the top floor of a period building (with lift) offering spacious accommodation in a superb location, moments from Marble Arch, Hyde Park and Oxford Street.





Complimentary membership to Portman Concierge.

Holding deposit is 1 week's rent = £920 (at asking price)

Security deposit is 5 week's rent = £4,600 (at asking price £920pw)

Minimum Term 12 months

Council Tax Band G

For the latest information on broadband and mobile coverage, please visit [checker.ofcom](https://www.checker.ofcom.gov.uk/) for the most up-to-date details.

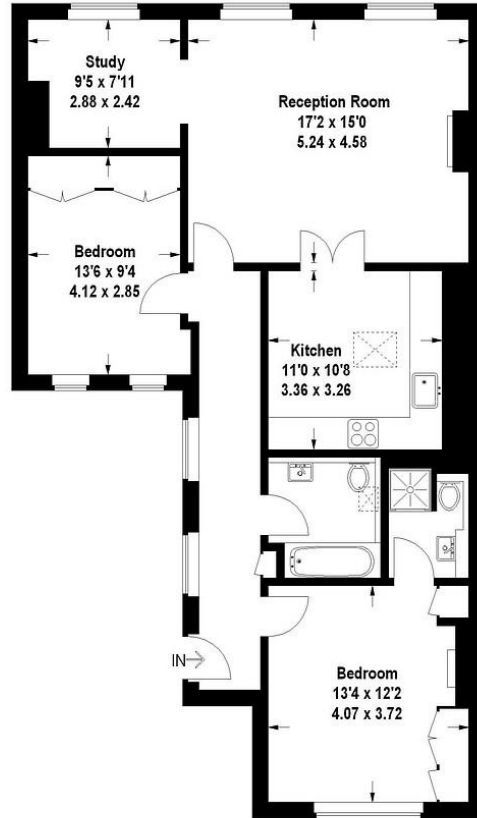
**ADDITIONAL INFORMATION**

Offers	Available for a minimum term of 12 months longer terms will be considered
Viewing	Strictly by appointment
Local Authority	Westminster City Council - Council Tax Band G



## Great Cumberland Place, W1

Approximate Gross Internal Area  
91 sq m / 979 sq ft



Fourth Floor

This plan is for layout guidance only. Not drawn to scale unless stated. Windows and door openings are approximate. Whilst every care is taken in the preparation of this plan, please check all dimensions, shapes and compass bearings before making any decisions reliant upon them. (ID 80189)

**T: 020 7486 8866**

37 New Cavendish Street, London, W1G 9TL

E: marylebone.lettings@carterjonas.co.uk

A member of



*Exclusive UK affiliate of*

**CHRISTIE'S**  
INTERNATIONAL REAL ESTATE

Classification L2 - Business Data



Energy Efficiency Rating		
	Current	Potential
Very energy efficient - lower running costs		
(92+) <b>A</b>		
(81-91) <b>B</b>		
(69-80) <b>C</b>		
(55-68) <b>D</b>	56	64
(39-54) <b>E</b>		
(21-38) <b>F</b>		
(1-20) <b>G</b>		
Not energy efficient - higher running costs		
England, Scotland & Wales	EU Directive 2002/91/EC	

### IMPORTANT INFORMATION

These particulars are for general information purposes only and do not represent an offer or contract or part of one. Carter Jonas or anyone in their employment has made every attempt to ensure that the particulars and other information provided are as accurate as possible and they are not intended to amount to advice on which you should rely as being factually accurate. Full information which may be relevant to your decision regarding the property can be found on the property listing on [carterjonas.co.uk](http://carterjonas.co.uk) or a separately available material information sheet, and we would advise you to confirm the details of any material information prior to any offer being submitted. You should not assume that the property has all necessary planning, building regulations or other consents and Carter Jonas has not tested any services, facilities, or equipment. Any measurements and distances given are approximate only. Where Carter Jonas has been provided with a floorplan by a third party, we cannot guarantee that the floorplan has been measured in accordance with IPMS. Purchasers or prospective tenants must satisfy themselves of all of the aforementioned by independent inspection or otherwise. Our images only represent part of the property as it appeared at the time they were taken and do not represent the furnishings included; these are confirmed in a separate inventory. If you require further information, please contact us. \*Administration fees may apply depending on tenancy type. Please contact your local branch for this information.