



GREAT TITCHFIELD STREET, LONDON, W1W
£2,750 per week*

Carter Jonas

FLAT 3, PRINT WORKS HOUSE, GREAT TITCHFIELD STREET, LONDON, W1W 6RH

- Two Doubled Bedroom
- Open plan kitchen & reception room
- Modern bathroom
- Exposed brickwork
- High ceilings
- Located on Great Titchfield Street

THE PROPERTY

This meticulously crafted apartment boasts a selection of stylish fixtures and finishes that enhance the contemporary, industrial vibe of the building. Notable features encompass exposed brick walls, striking Critall windows, hardwood flooring, a state-of-the-art lighting system, and sophisticated cabling for smart home technology.

The interior includes a spacious open-plan reception area, complete with a fully equipped kitchen, a master bedroom that features stunning lighting and an exposed brick wall, and a second double bedroom, along with a well-appointed bathroom.

Located on Great Titchfield Street, this stylish rental property offers modern living in the heart of Fitzrovia. The apartment features contemporary interiors, an open-plan living space, high-spec finishes, and large windows that provide plenty of natural light. Positioned just moments from local shops, cafes, and excellent transport links, it's ideal for those seeking a vibrant city lifestyle.

Holding deposit is 1 week's rent = £2,750 (at asking price)

Security deposit is 6 week's rent = £16,500 (at asking price £2,750pw)

Minimum Term 12 months

Council Tax Band G

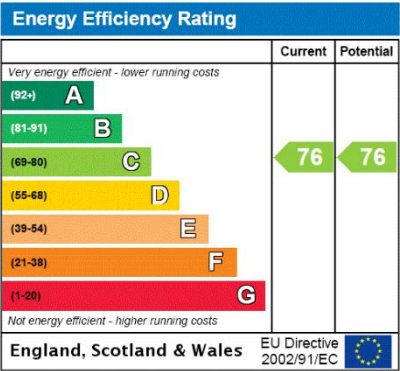
For the latest information on broadband and mobile coverage, please visit [/checker.ofcom](https://www.ofcom.gov.uk/consult/condocs/broadband/broadband-checker/) for the most up-to-date details.

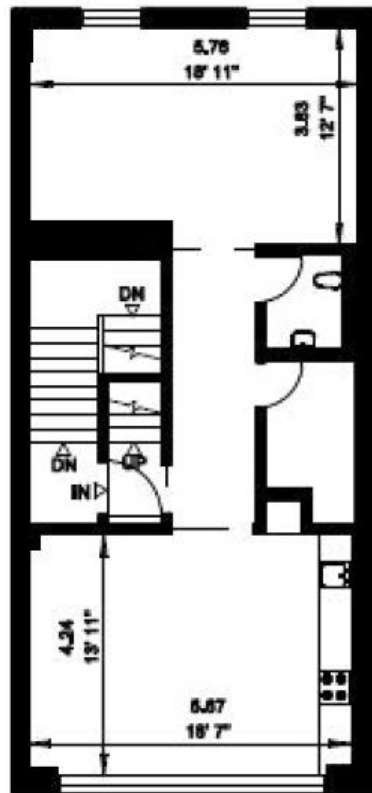
This beautifully renovated two-bedroom apartment showcases exposed brick walls, and premium finishes, perfectly situated amidst the vibrant area of Fitzrovia.



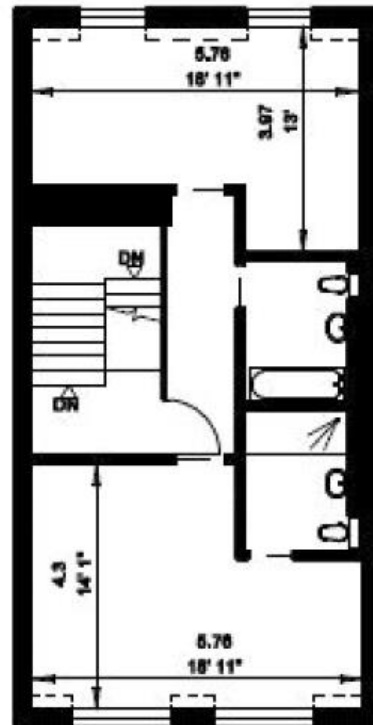
ADDITIONAL INFORMATION

Offers	Available for a minimum term of 12 months longer terms will be considered
Viewing	Strictly by appointment
Local Authority	Westminster City Council - Council Tax Band G





THIRD FLOOR



FOURTH FLOOR

FLAT 3

Gross Internal Area = 132 sq. metres
1426 sq. feet



IMPORTANT INFORMATION

These particulars are for general information purposes only and do not represent an offer or contract or part of one. Carter Jonas or anyone in their employment has made every attempt to ensure that the particulars and other information provided are as accurate as possible and they are not intended to amount to advice on which you should rely as being factually accurate. Full information which may be relevant to your decision regarding the property can be found on the property listing on carterjonas.co.uk or a separately available material information sheet, and we would advise you to confirm the details of any material information prior to any offer being submitted. You should not assume that the property has all necessary planning, building regulations or other consents and Carter Jonas has not tested any services, facilities, or equipment. Any measurements and distances given are approximate only. Where Carter Jonas has been provided with a floorplan by a third party, we cannot guarantee that the floorplan has been measured in accordance with IPMS. Purchasers or prospective tenants must satisfy themselves of all of the aforementioned by independent inspection or otherwise. Our images only represent part of the property as it appeared at the time they were taken and do not represent the furnishings included; these are confirmed in a separate inventory. If you require further information, please contact us. *Administration fees may apply depending on tenancy type. Please contact your local branch for this information.

T: 020 7486 8866

37 New Cavendish Street, London, W1G 9TL

E: marylebone.lettings@carterjonas.co.uk

A member of



Exclusive UK affiliate of

CHRISTIE'S
INTERNATIONAL REAL ESTATE