



ST. CHRISTOPHER'S PLACE, MARYLEBONE, W1U
£595 per week*

Carter Jonas

**FLAT 32 GREENGARDEN
HOUSE, ST.
CHRISTOPHER'S PLACE,
MARYLEBONE, LONDON,
W1U 1NL**

- 1 Reception Room
- 1 Bedroom
- 1 Bathroom
- Fully Furnished
- Located with easy access of Bond Street
- Plus £75 for services per week (gas, electricity, water and internet).

THE PROPERTY

Each of these apartments has a private entrance, hallway, fully equipped kitchen, sitting room with dining area and desk, bathroom and double bedroom.

The apartment has double glazing throughout, 24-hour hot water and heating and benefits from onsite property management and lift access. The flat further benefits from an airconditioned bedroom.

St Christopher's Place London, located near Oxford Street and a 1-minute walk away from Bond Street station, is an excellent alternative for both business and pleasure travellers. It has long been a beloved location among Londoners and is nestled between Oxford Street and Marylebone. As a social hub, St Christopher's Place provides various amenities, such as morning coffee stops, outdoor all-day dining, high street favourites, and independent brands.

There is an additional cost of £75 per week for services which covers gas, electricity, broadband and water.

Holding deposit is 1 weeks rent = £595 (at asking price)

Deposit is 5 weeks rent = £2,975 (at asking price of £595pw)

Minimum Term 12 months.

Council Tax Band F

Spacious & homely one bedroom furnished apartment, stylishly decorated to a high standard, in a prime location close to Oxford Street & all the amenities of Marylebone.

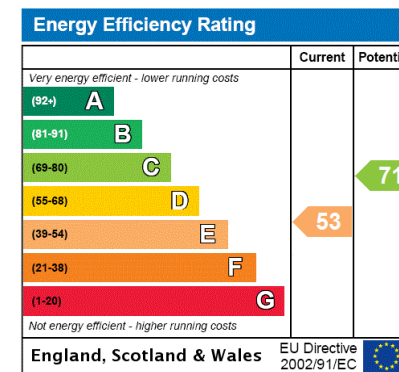
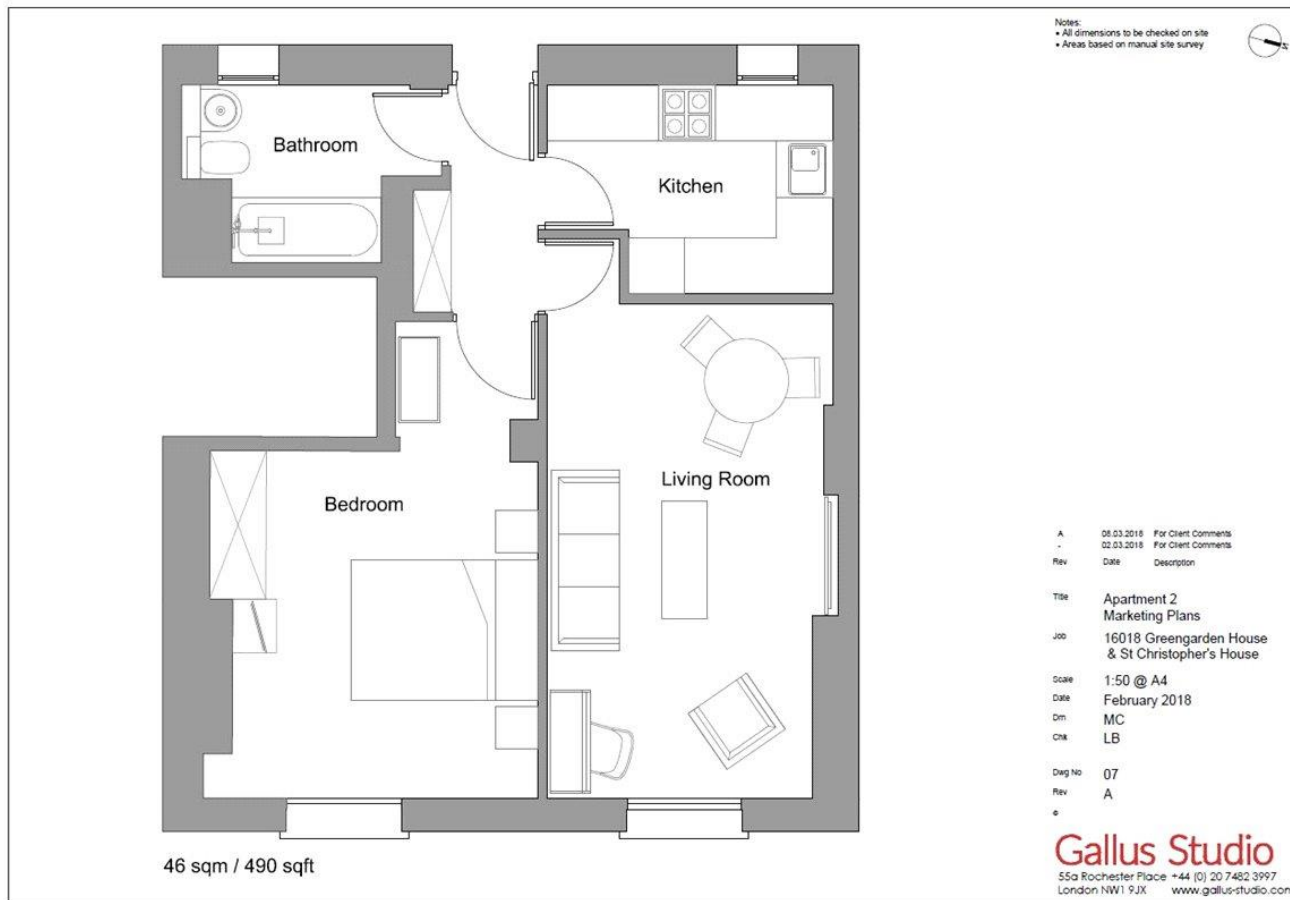


For the latest information on broadband and mobile coverage, please visit [/checker.ofcom](http://checker.ofcom) for the most up-to-date details.

ADDITIONAL INFORMATION

Offers	Available for a minimum term of 12 months longer terms will be considered
Viewing	Strictly by appointment
Local Authority	Westminster City Council - Council Tax Band F





T: 020 7486 8866

37 New Cavendish Street, London, W1G 9TL

E: marylebone.lettings@carterjonas.co.uk

A member of



Exclusive UK affiliate of

CHRISTIE'S
INTERNATIONAL REAL ESTATE

IMPORTANT INFORMATION

These particulars are for general information purposes only and do not represent an offer or contract or part of one. Carter Jonas or anyone in their employment has made every attempt to ensure that the particulars and other information provided are as accurate as possible and they are not intended to amount to advice on which you should rely as being factually accurate. Full information which may be relevant to your decision regarding the property can be found on the property listing on carterjonas.co.uk or a separately available material information sheet, and we would advise you to confirm the details of any material information prior to any offer being submitted. You should not assume that the property has all necessary planning, building regulations or other consents and Carter Jonas has not tested any services, facilities, or equipment. Any measurements and distances given are approximate only. Where Carter Jonas has been provided with a floorplan by a third party, we cannot guarantee that the floorplan has been measured in accordance with IPMS. Purchasers or prospective tenants must satisfy themselves of all of the aforementioned by independent inspection or otherwise. Our images only represent part of the property as it appeared at the time they were taken and do not represent the furnishings included; these are confirmed in a separate inventory. If you require further information, please contact us. *Administration fees may apply depending on tenancy type. Please contact your local branch for this information.