



DORSET SQUARE, LONDON, NW1
£1,500 per week*

Carter Jonas

FLAT 9, TENNYSON COURT 10-14, DORSET SQUARE, LONDON, NW1 6QB

- Four bedrooms all with ensembles
- Reception room
- Kitchen
- Dining room
- Guest WC
- Plenty of storage
- Duplex
- Access to Dorset Square

THE PROPERTY

The property offers a generous layout, including an entrance hall with an entry phone system, a large storage cupboard, and a bright, spacious reception room. The separate dining room is ideal for entertaining, while the fully fitted kitchen features integrated appliances. Each of the four well-sized bedrooms has its own en-suite bathroom. Additional storage space is provided with an under-stair's cupboard, a separate storage room, and a guest WC.

It benefits from private access to Dorset Square and a dedicated porter service.

Located just moments from the tranquil surroundings of Regents Park, the apartment is also close to a wide range of local amenities, including the bars and restaurants of Baker Street and Marylebone High Street, as well as Bond Street and Marble Arch. Excellent transport links are available from Baker Street Station, which provides access to the Bakerloo, Circle, Hammersmith & City, Jubilee, and Metropolitan lines, along with numerous bus routes to the West End.

Holding deposit is 1 week's rent = £1,500 (at asking price)

Security deposit is 6 weeks rent = £9,000 (at asking price £1,500pw)

Term 6 Months.

Council Tax Band G

For eligibility for resident parking permits, please refer to the

This spacious four-bedroom, four-bathroom duplex apartment is situated on the second floor of a highly sought-after building in a prime location.

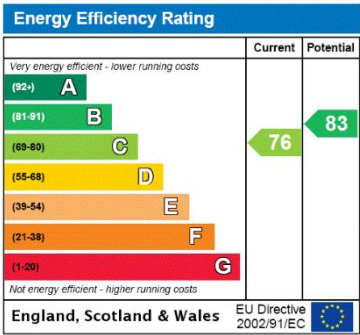


<https://www.westminster.gov.uk/parking> website for further details.

For the latest information on broadband and mobile coverage, please visit <https://checker.ofcom.org.uk/en-gb/broadband-coverage> for the most up-to-date details.

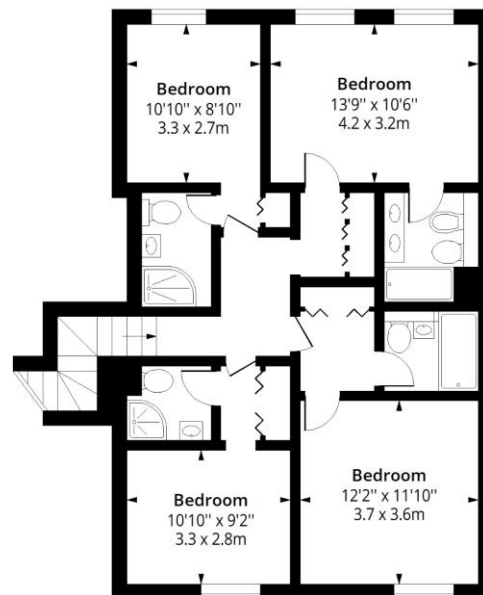
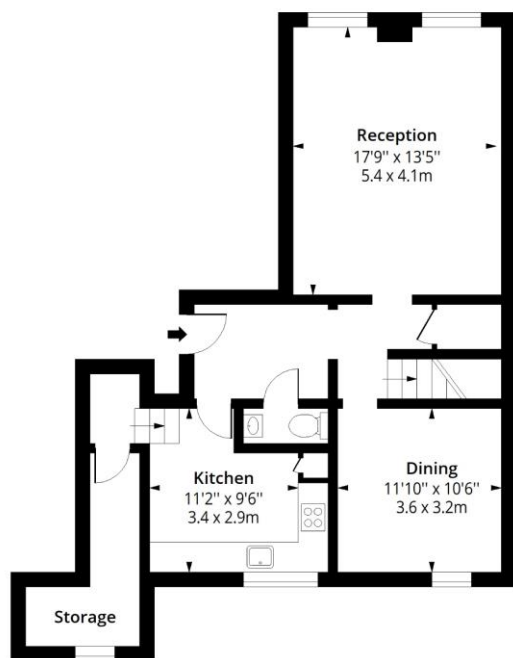
ADDITIONAL INFORMATION

Offers	Available for a minimum term of 12 months longer terms will be considered
Viewing	Strictly by appointment
Local Authority	hammersmith - Council Tax Band G



Tennyson Court, NW1

Approx. Gross Internal Area 1615 Sq Ft - 150.03 Sq M



Measured according to RICS IPMS2. Floor plan is for illustrative purposes only and is not to scale. Every attempt has been made to ensure the accuracy of the floor plan shown, however all measurements, fixtures, fittings and data shown are an approximate interpretation for illustrative purposes only. 1 sq m = 10.76 sq feet.

lpaplus.com

Date: 25/3/2025

T: 020 7486 8866

37 New Cavendish Street, London, W1G 9TL

E: marylebone.lettings@carterjonas.co.uk

A member of



Exclusive UK affiliate of

CHRISTIE'S
INTERNATIONAL REAL ESTATE

Classification L2 - Business Data

IMPORTANT INFORMATION

These particulars are for general information purposes only and do not represent an offer or contract or part of one. Carter Jonas or anyone in their employment has made every attempt to ensure that the particulars and other information provided are as accurate as possible and they are not intended to amount to advice on which you should rely as being factually accurate. Full information which may be relevant to your decision regarding the property can be found on the property listing on carterjonas.co.uk or a separately available material information sheet, and we would advise you to confirm the details of any material information prior to any offer being submitted. You should not assume that the property has all necessary planning, building regulations or other consents and Carter Jonas has not tested any services, facilities, or equipment. Any measurements and distances given are approximate only. Where Carter Jonas has been provided with a floorplan by a third party, we cannot guarantee that the floorplan has been measured in accordance with IPMS. Purchasers or prospective tenants must satisfy themselves of all of the aforementioned by independent inspection or otherwise. Our images only represent part of the property as it appeared at the time they were taken and do not represent the furnishings included; these are confirmed in a separate inventory. If you require further information, please contact us. *Administration fees may apply depending on tenancy type. Please contact your local branch for this information.