



MANCHESTER STREET, MARYLEBONE, W1U
£850 per week*

Carter Jonas

FLAT 2, MANCHESTER STREET, MARYLEBONE, LONDON, W1U 7LJ

- Professionally managed by The Portman Estate.
- Complimentary membership to Portman Concierge.
- One Bedroom
- One Bathroom
- Veranda/ Terrace
- Reception
- Kitchen
- Wood Floors
- Modern
- Unfurnished (or furnished at separate cost)

THE PROPERTY

This residence boasts soaring ceilings and charming original features, creating a spacious and inviting atmosphere. It includes a generous reception area, a separate eat-in kitchen, a comfortable double bedroom, and a modern bathroom.

Additionally, a private veranda or balcony offers an ideal outdoor space to relax. The property features elegant wood flooring throughout, combining contemporary style with classic elements for a truly appealing living environment.

The property is professionally managed by The Portman Estate.

Available for long term rental on an unfurnished basis, or furnished (at separate cost)

Complimentary membership to Portman Concierge.

Manchester Street is conveniently located in the heart of Marylebone Village, just off Manchester Square. It is only a short distance from the restaurants, shops, and attractions of Marylebone and the West End, as well as outdoor spaces of Hyde Park, Regent's Park, and Manchester Square. Transport links are excellent from nearby Bond Street (about 0.5 mile) and Baker Street (about 0.3 mile) underground stations, as well as Marylebone (about 0.6 mile), Paddington (about 1.1 mile), and Euston (about 1.3 mile) mainline stations.

The Portman Estate is a prestigious property portfolio located in the heart of central London, covering 110 acres of prime real estate in

This stunning ground floor apartment has been newly renovated throughout to a wonderful standard and is superbly located moments from trendy Chiltern Street and the shops and restaurants of Marylebone High Street.



Marylebone. Renting through The Portman Estate comes with the advantage of an in-house property management team, providing responsive, hands-on service to ensure residents' needs are met quickly and efficiently. This dedicated team helps maintain the quality of living, handling everything from routine maintenance to emergency repairs, making the rental experience hassle-free.

Holding deposit is 1 weeks rent = £850 per week (at asking price).

Security deposit is 5 weeks rent = £4,250 (at asking price of £850pw).

Minimum Term 12 months

Council Tax Band F

For the latest information on broadband and mobile coverage, please visit [checker.ofcom](https://www.checker.ofcom.gov.uk/) for the most up-to-date details

ADDITIONAL INFORMATION

Offers	Available for a minimum term of 12 months longer terms will be considered
Viewing	Strictly by appointment
Local Authority	Westminster City Council - Council Tax Band F

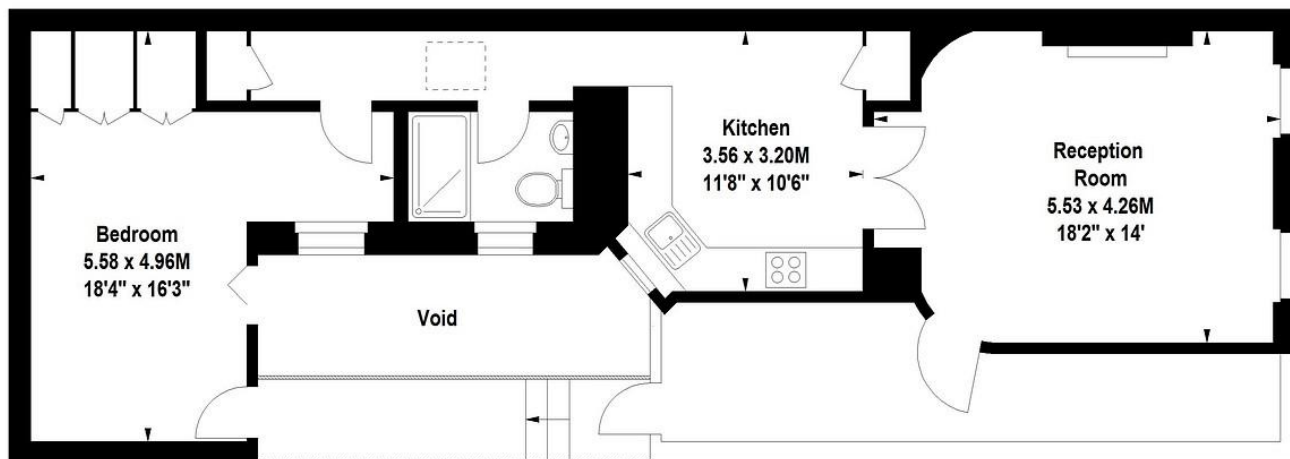




Manchester Street, W1U

Approximate gross internal area 64.57 sq m / (695 sq ft)

Approximate area of patio 5.85 sq m / (63 sq ft)



Ground Floor

hydepark@cluttons.com

020 7262 2226

cluttons.com

Floor Plan produced for Cluttons by Mays Floorplans © . Tel 020 3397 4594

Illustration for identification purposes only, not to scale

All measurements are maximum, and include wardrobes and window bays where applicable

Energy Efficiency Rating		
	Current	Potential
Very energy efficient - lower running costs		
(92+) A		
(81-91) B		
(69-80) C	77	77
(55-68) D		
(39-54) E		
(21-38) F		
(1-20) G		
Not energy efficient - higher running costs		
England, Scotland & Wales	EU Directive 2002/91/EC	

T: 020 7486 8866

37 New Cavendish Street, London, W1G 9TL

E: marylebone.lettings@carterjonas.co.uk

A member of



Exclusive UK affiliate of

CHRISTIE'S
INTERNATIONAL REAL ESTATE

IMPORTANT INFORMATION

These particulars are for general information purposes only and do not represent an offer or contract or part of one. Carter Jonas or anyone in their employment has made every attempt to ensure that the particulars and other information provided are as accurate as possible and they are not intended to amount to advice on which you should rely as being factually accurate. Full information which may be relevant to your decision regarding the property can be found on the property listing on carterjonas.co.uk or a separately available material information sheet, and we would advise you to confirm the details of any material information prior to any offer being submitted. You should not assume that the property has all necessary planning, building regulations or other consents and Carter Jonas has not tested any services, facilities, or equipment. Any measurements and distances given are approximate only. Where Carter Jonas has been provided with a floorplan by a third party, we cannot guarantee that the floorplan has been measured in accordance with IPMS. Purchasers or prospective tenants must satisfy themselves of all of the aforementioned by independent inspection or otherwise. Our images only represent part of the property as it appeared at the time they were taken and do not represent the furnishings included; these are confirmed in a separate inventory. If you require further information, please contact us. *Administration fees may apply depending on tenancy type. Please contact your local branch for this information.