



**PORTLAND PLACE, LONDON, W1B**  
£11,000 per month\*

**Carter Jonas**



# FLAT A, PORTLAND PLACE, LONDON, W1B 1QT

- 3 Bedrooms
- 2 En Suite Bathrooms
- En Suite Shower Room
- 2 Reception Rooms
- Dining Room
- Kitchen
- Patio

## THE PROPERTY

This beautiful duplex apartment has been tastefully redecorated throughout and provides plenty of natural light through large, southwest facing windows.

Comprising of three bedrooms, kitchen and dining room, two reception rooms and three bathrooms. There is also access to a large patio garden.

Portland Place is a prominent street located in the heart of London, nestled between the bustling areas of Marylebone and Fitzrovia. Renowned for its elegant Georgian architecture, Portland Place is home to several notable institutions, including the BBC's Broadcasting House and the Royal Institute of British Architects. The road runs north from Oxford Circus, offering a mix of cultural and professional spaces. The nearest train stations include Great Portland Street, approximately 0.2 miles to the northwest, providing access to the Metropolitan, Circle, and Hammersmith & City lines. Also close by is Oxford Circus Station, about 0.5 miles to the south, facilitating travel via the Bakerloo, Central, and Victoria lines.

Holding deposit is 1 week's rent = £2,538.46 (at asking price)

Security deposit is 6 week's rent = £15,230.76 (at asking price £2,538.46pw)

Minimum Term 12 months

Council Tax Band H

For the latest information on broadband and mobile coverage, please visit [checker.ofcom](http://checker.ofcom) for the most up-to-date details.

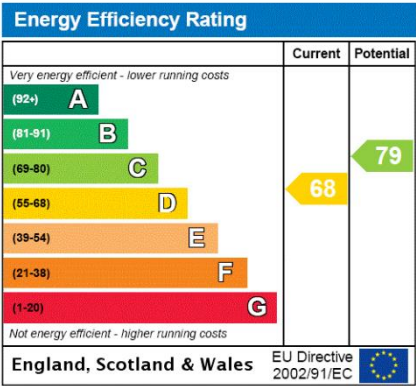
A three-bedroom duplex apartment on the ground and lower ground floors of a smart, period building located on the corner of Portland Place and Devonshire Street.





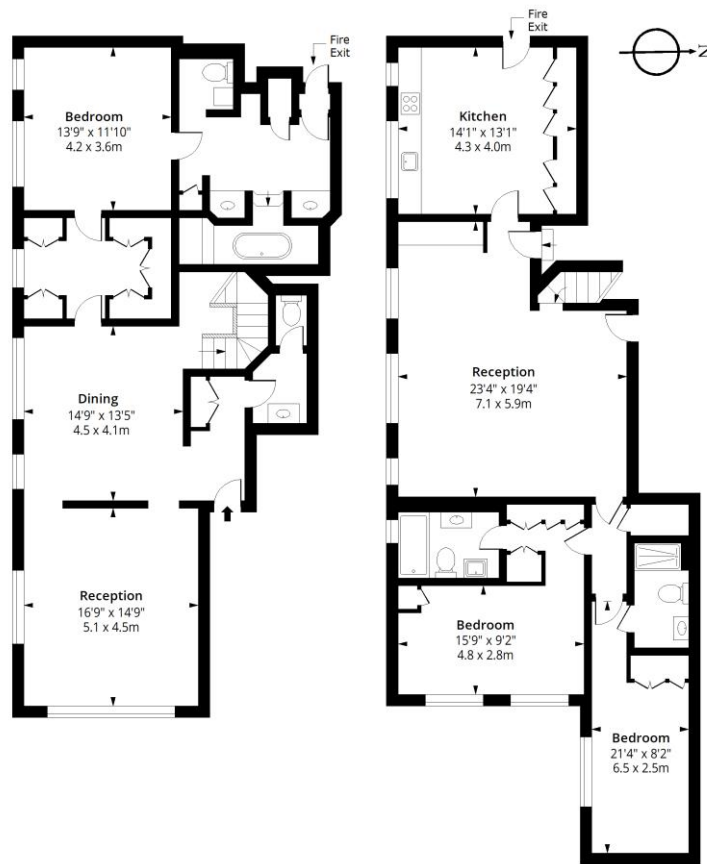
ADDITIONAL INFORMATION

Offers	Available for a minimum term of 12 months longer terms will be considered
Viewing	Strictly by appointment
Local Authority	Westminster City Council - Council Tax Band H



# Portland Place, W1B

Approx. Gross Internal Area 2274 Sq Ft - 211.25 Sq M



## Ground Floor

Floor Area 1128 Sq Ft - 104.79 Sq M

## First Floor

Floor Area 1146 Sq Ft - 106.46 Sq M



Measured according to RICS IPMS2. Floor plan is for illustrative purposes only and is not to scale. Every attempt has been made to ensure the accuracy of the floor plan shown, however all measurements, fixtures, fittings and data shown are an approximate interpretation for illustrative purposes only. 1 sq m = 10.76 sq feet.

lpaplus.com

Date: 21/5/2024

T: 020 7486 8866

37 New Cavendish Street, London, W1G 9TL

E: marylebone.lettings@carterjonas.co.uk

A member of



Exclusive UK affiliate of

**CHRISTIE'S**  
INTERNATIONAL REAL ESTATE

Classification L2 - Business Data



## IMPORTANT INFORMATION

These particulars are for general information purposes only and do not represent an offer or contract or part of one. Carter Jonas or anyone in their employment has made every attempt to ensure that the particulars and other information provided are as accurate as possible and they are not intended to amount to advice on which you should rely as being factually accurate. Full information which may be relevant to your decision regarding the property can be found on the property listing on [carterjonas.co.uk](http://carterjonas.co.uk) or a separately available material information sheet, and we would advise you to confirm the details of any material information prior to any offer being submitted. You should not assume that the property has all necessary planning, building regulations or other consents and Carter Jonas has not tested any services, facilities, or equipment. Any measurements and distances given are approximate only. Where Carter Jonas has been provided with a floorplan by a third party, we cannot guarantee that the floorplan has been measured in accordance with IPMS. Purchasers or prospective tenants must satisfy themselves of all of the aforementioned by independent inspection or otherwise. Our images only represent part of the property as it appeared at the time they were taken and do not represent the furnishings included; these are confirmed in a separate inventory. If you require further information, please contact us. \*Administration fees may apply depending on tenancy type. Please contact your local branch for this information.