



MONTAGU PLACE, LONDON, W1H

£850 per week*

Carter Jonas

FIRST FLOOR, FLAT 2, MONTAGU PLACE, LONDON, W1H 2ES

- Professionally managed by The Portman Estate.
- Complimentary membership to Portman Concierge.
- One Bedroom
- One Reception Room
- One Bathroom
- Flat/Apartment
- First Floor
- Unfurnished basis, or furnished (at separate cost)

THE PROPERTY

The apartment features an open plan reception room with quality wood floors, impressive high ceilings, beautiful original corning and a high spec fully fitted kitchen. It also comprises a double bedroom with excellent built-in storage and modern bathroom.

The property is professionally managed by The Portman Estate.

Available for long term rental on an unfurnished basis, or furnished (at separate cost)

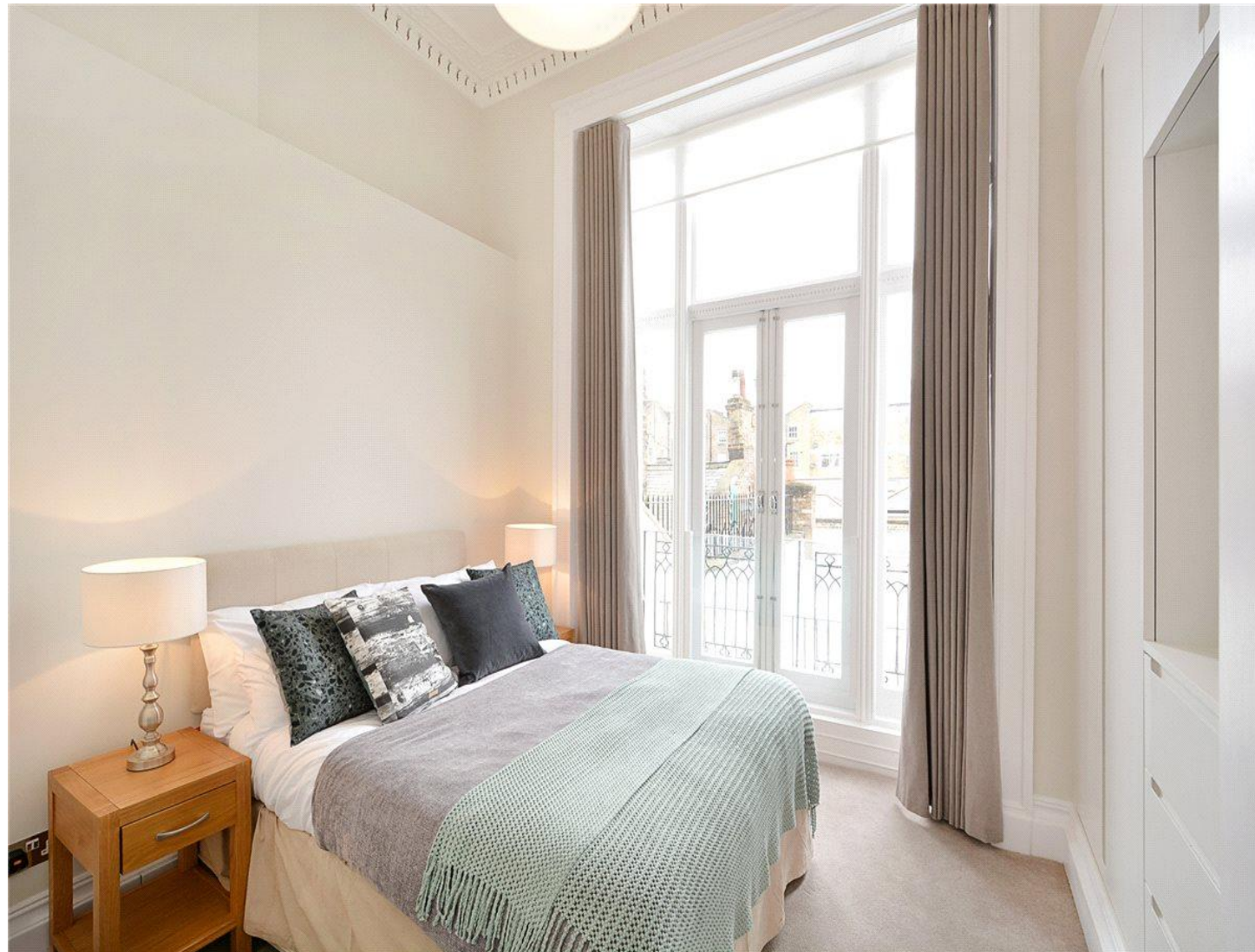
Complimentary membership to Portman Concierge.

Montagu Place, nestled in the heart of London, captivates with its prime location. Surrounded by the city's cultural and recreational treasures, this address offers unparalleled access to iconic landmarks, vibrant neighbourhoods, and a cosmopolitan lifestyle. The nearest tube stations could include Baker Street, Great Portland Street, and Bond Street.

The Portman Estate is a prestigious property portfolio located in the heart of central London, covering 110 acres of prime real estate in Marylebone. Renting through The Portman Estate comes with the advantage of an in-house property management team, providing responsive, hands-on service to ensure residents' needs are met quickly and efficiently. This dedicated team helps maintain the quality of living, handling everything from routine maintenance to emergency repairs, making the rental experience hassle-free.

Holding deposit is 1 week's rent = £850 (at asking price)

Stunning first floor apartment that has been finished to an excellent standard, on the first floor of this period building with a south-facing reception



Security deposit is 5 week's rent = £4,250 (at asking price £850pw)

Minimum Term 12 months

Council Tax Band E

For the latest information on broadband and mobile coverage, please visit [/checker.ofcom](http://checker.ofcom) for the most up-to-date details.

ADDITIONAL INFORMATION

Offers Available for a minimum term of 12 months longer terms will be considered

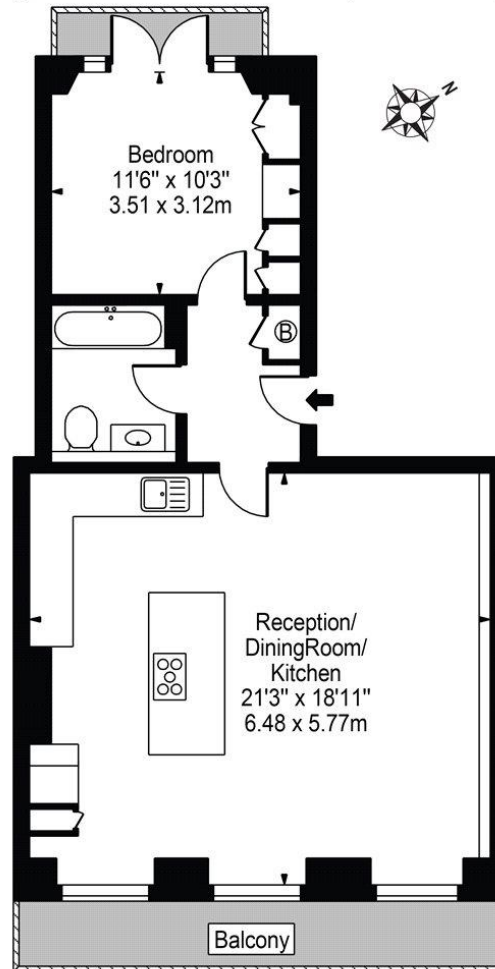
Viewing Strictly by appointment

Local Authority Westminster City Council - Council Tax Band E



Montagu Place, Marylebone, W1H

Approx. Gross Internal Area 617 Sq Ft - 57.32 Sq M



First Floor

For Illustration Purposes Only - Not To Scale

Energy Efficiency Rating		Current	Potential
Very energy efficient - lower running costs			
(92-100) A			
(81-91) B			
(69-80) C		69	78
(55-68) D			
(39-54) E			
(21-38) F			
(1-20) G			
Not energy efficient - higher running costs			
England, Scotland & Wales		EU Directive 2002/91/EC	

T: 020 7486 8866

37 New Cavendish Street, London, W1G 9TL

E: marylebone.lettings@carterjonas.co.uk

A member of



Exclusive UK affiliate of

CHRISTIE'S
INTERNATIONAL REAL ESTATE

Classification L2 - Business Data

IMPORTANT INFORMATION

These particulars are for general information purposes only and do not represent an offer or contract or part of one. Carter Jonas or anyone in their employment has made every attempt to ensure that the particulars and other information provided are as accurate as possible and they are not intended to amount to advice on which you should rely as being factually accurate. Full information which may be relevant to your decision regarding the property can be found on the property listing on carterjonas.co.uk or a separately available material information sheet, and we would advise you to confirm the details of any material information prior to any offer being submitted. You should not assume that the property has all necessary planning, building regulations or other consents and Carter Jonas has not tested any services, facilities, or equipment. Any measurements and distances given are approximate only. Where Carter Jonas has been provided with a floorplan by a third party, we cannot guarantee that the floorplan has been measured in accordance with IPMS. Purchasers or prospective tenants must satisfy themselves of all of the aforementioned by independent inspection or otherwise. Our images only represent part of the property as it appeared at the time they were taken and do not represent the furnishings included; these are confirmed in a separate inventory. If you require further information, please contact us. *Administration fees may apply depending on tenancy type. Please contact your local branch for this information.