



FOXHOLES

Guide Price £625,000

Carter Jonas

FOXHOLES LONG LANE HERMITAGE RG18 9QR

- Newbury town and mainline station (Paddington) 4 miles
- Thatcham town and mainline station 4 miles
- M4 and A34 2 miles

Large entrance hall · cloakroom · living room · 4 bedrooms
· double glazed conservatory · kitchen · family bathroom
· first floor accommodation with bedroom and excellent
loft rooms · 30ft detached garage · plenty of parking · large
well-tended gardens · triple glazing · solar panels with
battery storage and EV point · Energy Rating C

SITUATION

The property offers a good location situated on this attractive and popular village north-east of Newbury. There is an active community and good village facilities including a shop/post office, church, pubs, garage, village hall and primary school. The village lies in the folds of beautiful Downland countryside which provides good walking and riding and it is within easy reach of a good variety of recreational facilities including golf courses and country parks. It is well placed for travel on all major routes, with access to the A34 and M4 at junction 13, which is 2 miles away at Chieveley.

DESCRIPTION

The long entrance hall gives access to all principal accommodation with a comfortable living room which leads to a good quality conservatory with views and access onto the rear garden. The property also offers a useful cloakroom and fitted kitchen with access to outside. There are 3 comfortable bedrooms to the ground floor offering flexible and spacious accommodation and stairs lead to a first floor fourth bedroom and loft store. The property offers some expensive improvements including an air source heating system and offers good potential for further extending due to the sizable plot.

A SPACIOUS AND ATTRACTIVE DETACHED CHALET STYLE BUNGALOW WITH IMPRESSIVE GARDENS OF 0.19 OF AN ACRE, DETACHED GARAGE AND PLENTY OF PARKING. THE PROPERTY BENEFITS FROM 2 RECEPTION ROOMS, KITCHEN AND 4 COMFORTABLE DOUBLE BEDROOMS. WELL LOCATED IN THE SOUGHT AFTER VILLAGE OF HERMITAGE.



OUTSIDE

The large plot and gardens measuring 0.19 of an acre are a particular feature with plenty of parking via an extensive gravel frontage and access to the garage. The rear garden is delightful with a large patio leading to generous level lawns

ADDITIONAL INFORMATION

Tenure: Freehold

Services: Mains electricity, water and drainage, air source heat pump central heating, triple glazing. Solar panels with battery storage and EV point.

Local Authority: West Berkshire Council - 01635 551111

Council Tax: Band D

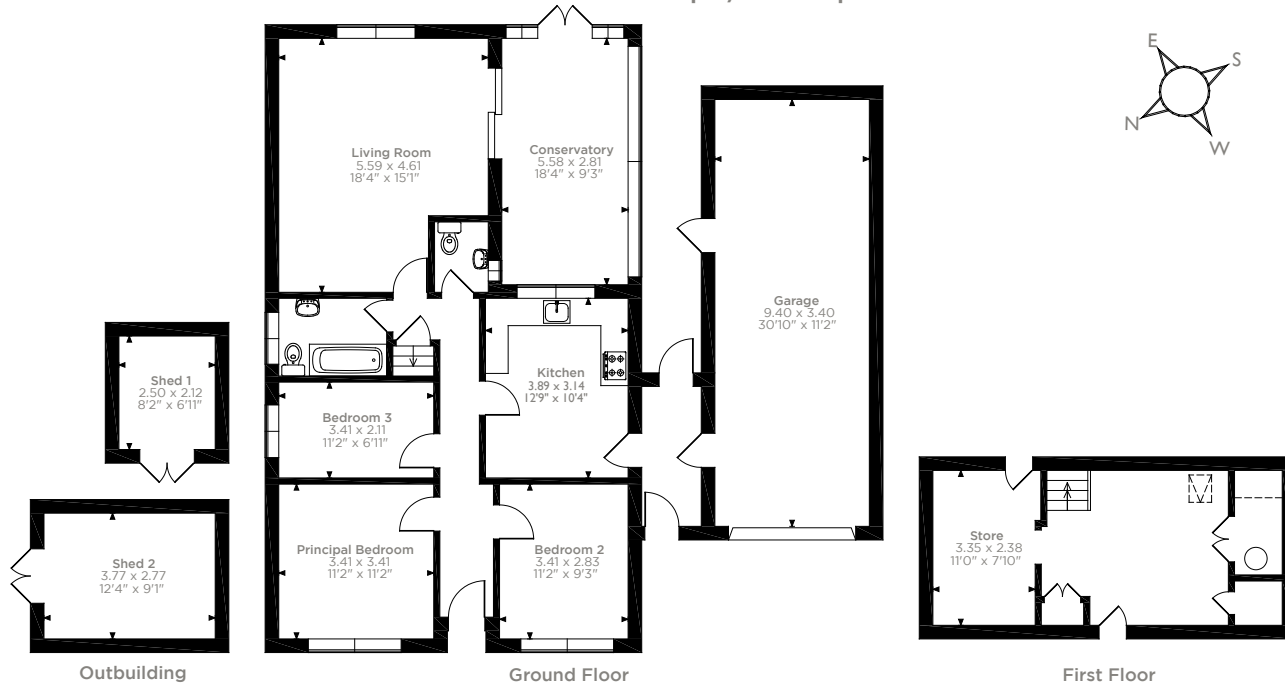
Viewing: By prior appointment through the Newbury office 01635 263010

Directions: Please use postcode RG18 9QR



Foxholes, Long Lane, Hermitage, Thatcham

Approximate Gross Internal Area
 Main House = 132 Sq M/1421 Sq Ft
 Garage = 32 Sq M/344 Sq Ft
 Outbuildings = 15 Sq M/162 Sq Ft
 Total = 179 Sq M/1927 Sq Ft



Please note that the location of doors, windows and other items are approximate and this floorplan is to be used for illustrative purposes only. Unauthorized reproduction is prohibited.



Score	Energy rating	Current	Potential
92+	A		
81-91	B		82 B
69-80	C	69 C	
55-68	D		
39-54	E		
21-38	F		
1-20	G		

Newbury 01635 263000

newbury@carterjonas.co.uk
 51 Northbrook Street, Newbury, RG14 1DT

carterjonas.co.uk

Offices throughout the UK



IMPORTANT INFORMATION

Our property particulars do not represent an offer or contract, or part of one. The information given is without responsibility on the part of the agents, seller(s) or lessor(s) and you should not rely on the information as being factually accurate about the property, its condition or its value. Neither Carter Jonas LLP nor anyone in its employment or acting on its behalf has authority to make any representation or warranty in relation to this property. We have not carried out a detailed survey, nor tested the services, appliances or fittings at the property. The images shown may only represent part of the property and are as they appeared at the time of being photographed. The areas, measurements and distances are approximate only. Any reference to alterations or use does not mean that any necessary planning permission, building regulation or other consent has been obtained. The VAT position relating to the property may change without notice.