



**NORTH SYDMONTON, ECCHINSWELL, RG20 4UL**  
£2,200 per month\*

**Carter Jonas**



3 double bedroom house, with quality fixtures and fittings, in a semi-rural position backing onto farmland.

Spacious accommodation throughout: Entrance hall, cloakroom, family room/study, large open plan reception with doors to the garden incorporating a living area with a wood burner, dining area and fully fitted kitchen with cooker and dishwasher, utility room with fridge/freezer and washing machine.

On the first floor there is a spacious family bathroom with separate shower, 2 double bedrooms and a principal bedroom with ensuite shower room.

Enclosed rear gardens backing onto fields, driveway parking and detached double garage.

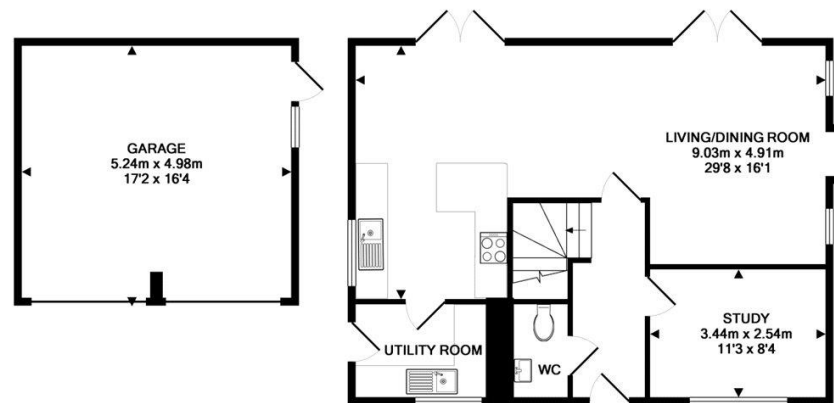
Available for an initial 12-month tenancy. EPC Rating C. Council Tax Band F (West Berks Government website for current cost).

Mains electric and water. Septic tank drainage and Calor gas central heating. Internet & Mobile: Further information on availability and speeds can be found on the Ofcom website.

At a rent of £2200.00 per calendar month: Holding deposit of 1 week's rent £507.00 Security deposit of 5 weeks rent £2538.00.

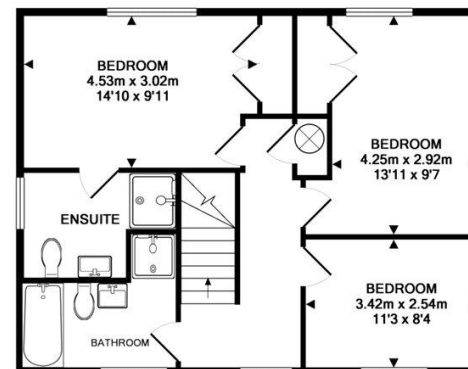
- Council Tax Band = F
- Deposit Required = £2538.00
- Long Let, Minimum term 12 months
- 3 BEDROOMS
- 2 BATHROOMS
- RURAL LOCATION
- GARAGE
- EPC = C

Energy Efficiency Rating		
	Current	Potential
Very energy efficient - lower running costs		
(95+) <b>A</b>		102
(81-94) <b>B</b>		
(69-80) <b>C</b>	75	
(55-68) <b>D</b>		
(39-54) <b>E</b>		
(21-38) <b>F</b>		
(1-20) <b>G</b>		
Not energy efficient - higher running costs		
England, Scotland & Wales EU Directive 2002/91/EC		



GATE COTTAGE NORTH SYDMONTON RG20 4UL  
TOTAL APPROX. FLOOR AREA 146.2 SQ.M. (1574 SQ.FT.)

Whilst every attempt has been made to ensure the accuracy of the floor plan contained here, measurements of doors, windows, rooms and any other items are approximate and no responsibility is taken for any error, omission, or mis-statement. This plan is for illustrative purposes only and should be used as such by any prospective purchaser. The services, systems and appliances shown have not been tested and no guarantee as to their operability or efficiency can be given.  
Made with Metropix ©2017



**Newbury Lettings 01635 263020**

newbury@carterjonas.co.uk

51 Northbrook Street, Newbury, Berkshire, RG14 1DT



*Exclusive UK affiliate of*

**CHRISTIE'S**  
INTERNATIONAL REAL ESTATE

Classification L2 - Business Data

## IMPORTANT INFORMATION

These particulars are for general information purposes only and do not represent an offer or contract or part of one. Carter Jonas or anyone in their employment has made every attempt to ensure that the particulars and other information provided are as accurate as possible and they are not intended to amount to advice on which you should rely as being factually accurate. Full information which may be relevant to your decision regarding the property can be found on the property listing on [carterjonas.co.uk](http://carterjonas.co.uk) or a separately available material information sheet, and we would advise you to confirm the details of any material information prior to any offer being submitted. You should not assume that the property has all necessary planning, building regulations or other consents and Carter Jonas has not tested any services, facilities, or equipment. Any measurements and distances given are approximate only. Where Carter Jonas has been provided with a floorplan by a third party, we cannot guarantee that the floorplan has been measured in accordance with IPMS. Purchasers or prospective tenants must satisfy themselves of all of the aforementioned by independent inspection or otherwise. Our images only represent part of the property as it appeared at the time they were taken and do not represent the furnishings including these are confirmed in a separate inventory. If you require further information, please contact us. \*Administration fees may apply depending on tenancy type. Please contact your local branch for this information.