



WOOLHAMPTON, READING, RG7 5FT
£1,750 per month*

Carter Jonas

Modern 3 bed house in a small development on the edge of Woolhampton village offering high fixtures and fittings.

Entrance hall, cloakroom, cream shaker style kitchen with built-in appliances (Bosch double oven, 4 ring gas hob, fridge, freezer, dishwasher, and washer-dryer. Spacious reception room with French doors to the rear patio.

Main bedroom with large built-in wardrobe and ensuite shower room, family bathroom and 2 further bedrooms.

Enclosed rear garden with patio, gas fired central heating (via Calor Gas) and 3 allocated parking spaces to the rear.

Available for an initial 12-month tenancy.

EPC Rating C. Council Tax Band E (West Berks Government website for current cost)

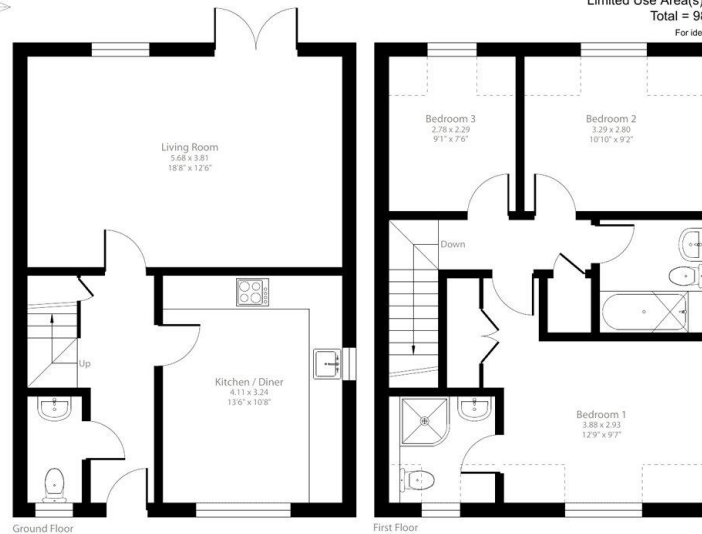
Mains electric, calor gas and water.

Internet & Mobile: Further information on availability and speeds can be found on the Ofcom website.

At a rent of £1750.00 per calendar month: Holding deposit of 1 week's rent £403.00, Security deposit of 5 weeks rent £2019.00.

- Council Tax Band = E
- Deposit Required = £2019.00
- Long Let
- Entrance hall
- Cloakroom
- Kitchen/breakfast room
- Living/dining room
- Main bedroom with en suite
- 2 further bedrooms
- Family bathroom
- Garden
- EPC = C

Energy Efficiency Rating		
	Current	Potential
Very energy efficient - lower running costs		
(91-100) A		
(81-90) B		
(69-80) C		
(55-68) D		
(39-54) E		
(21-38) F		
(1-20) G		
Not energy efficient - higher running costs		
England, Scotland & Wales EU Directive 2002/91/EC		



Floor plan produced in accordance with RICS Property Measurement 2nd Edition, incorporating International Property Measurement Standards (IPMS Residential). © richcom 2025. Produced for Carter Jonas. REF: 1228933

Reed Gardens, Woolhampton, Reading, RG7

Approximate Area = 932 sq ft / 86.5 sq m
Limited Use Area(s) = 54 sq ft / 5 sq m
Total = 986 sq ft / 91.5 sq m
For identification only - Not to scale



Newbury Lettings 01635 263020

newbury@carterjonas.co.uk

51 Northbrook Street, Newbury, Berkshire, RG14 1DT



Exclusive UK affiliate of

CHRISTIE'S
INTERNATIONAL REAL ESTATE
Classification L2 - Business Data

IMPORTANT INFORMATION

These particulars are for general information purposes only and do not represent an offer or contract or part of one. Carter Jonas or anyone in their employment has made every attempt to ensure that the particulars and other information provided are as accurate as possible and they are not intended to amount to advice on which you should rely as being factually accurate. Full information which may be relevant to your decision regarding the property can be found on the property listing on carterjonas.co.uk or a separately available material information sheet, and we would advise you to confirm the details of any material information prior to any offer being submitted. You should not assume that the property has all necessary planning, building regulations or other consents and Carter Jonas has not tested any services, facilities, or equipment. Any measurements and distances given are approximate only. Where Carter Jonas has been provided with a floorplan by a third party, we cannot guarantee that the floorplan has been measured in accordance with IPMS. Purchasers or prospective tenants must satisfy themselves of all of the aforementioned by independent inspection or otherwise. Our images only represent part of the property as it appeared at the time they were taken and do not represent the furnishings included; these are confirmed in a separate inventory. If you require further information, please contact us. *Administration fees may apply depending on tenancy type. Please contact your local branch for this information.