



TYDEHAMS, NEWBURY, RG14
£4,000 per month*

Carter Jonas

Detached 5-bedroom gated residence to the South of Newbury, in one of the most sought-after roads.

Cleverly extended and modernised over the years, the house now offers 2951 square feet of accommodation, in an exclusive, secluded setting, tucked away at the bottom of a private lane.

Within the catchment area of both the highly regarded St John's and St Bart's schools and within easy reach of several private schools in the area.

Entrance hall, cloakroom, double aspect sitting room with fireplace, bay window and French doors to the garden, family room with French doors to the rear garden and separate study/office. Large dining/breakfast/kitchen to the rear with bi folding doors to the garden and access to the utility room.

First floor principal double aspect bedroom with dressing room and en-suite bathroom. Guest bedroom with ensuite shower and walk in wardrobe/storage, two further double bedrooms, an additional bedroom and a family bathroom.

The property lies just off the Andover Road, a convenient distance from the centre of Newbury for local amenities and leisure facilities. There are excellent connections to the M4 and the A34, and a mainline train service to London Paddington.

Available for an initial 12-month tenancy.

EPC Rating D. Council Tax Band G (West Berks Government website for current cost)

Mains electric, gas and water. Septic tank drainage. Shared access via a private road.

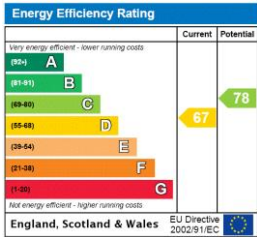
Internet & Mobile: Further information on availability and speeds can be found on the Ofcom website.

At a rent of £4000.00 per calendar month: Holding deposit of 1 week's rent £923.00 Security deposit of 5 weeks rent £4615.00



ADDITIONAL INFORMATION

Offers	Available for a minimum term of 12 months longer terms will be considered
Viewing	Strictly by appointment
Local Authority	- Council Tax Band G





Denotes restricted
head height

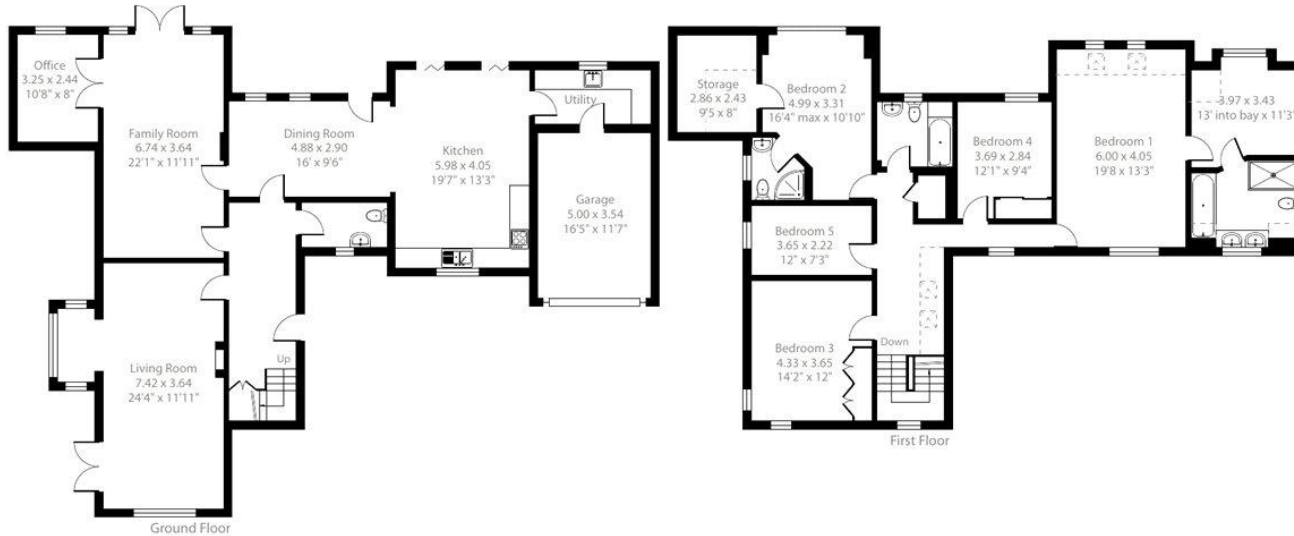
Tydehams, Newbury, RG14

Approximate Area = 2622 sq ft / 243.5 sq m

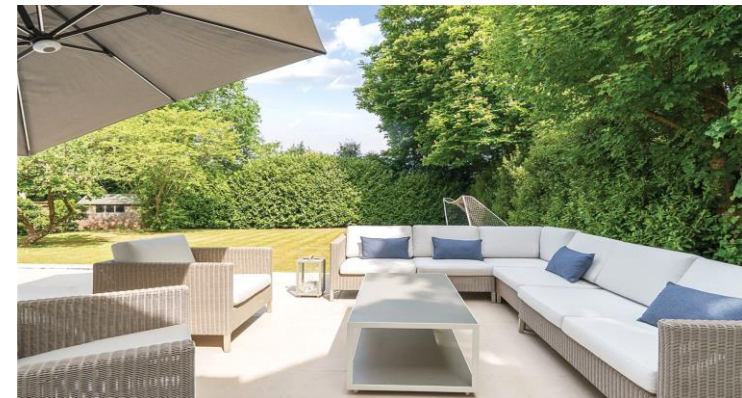
Limited Use Area(s) = 329 sq ft / 30.5 sq m

Total = 2951 sq ft / 274 sq m

For identification only - Not to scale



Floor plan produced in accordance with RICS Property Measurement 2nd Edition,
Incorporating International Property Measurement Standards (IPMS2 Residential). © nrichcom 2025.
Produced for Carter Jonas. REF: 1295471



T: 01635 263020

51 Northbrook Street, Newbury, Berkshire, RG14 1DT

E: newbury@carterjonas.co.uk

A member of



Exclusive UK affiliate of

CHRISTIE'S
INTERNATIONAL REAL ESTATE

Classification L2 - Business Data

IMPORTANT INFORMATION

These particulars are for general information purposes only and do not represent an offer or contract or part of one. Carter Jonas or anyone in their employment has made every attempt to ensure that the particulars and other information provided are as accurate as possible and they are not intended to amount to advice on which you should rely as being factually accurate. Full information which may be relevant to your decision regarding the property can be found on the property listing on carterjonas.co.uk or a separately available material information sheet, and we would advise you to confirm the details of any material information prior to any offer being submitted. You should not assume that the property has all necessary planning, building regulations or other consents and Carter Jonas has not tested any services, facilities, or equipment. Any measurements and distances given are approximate only. Where Carter Jonas has been provided with a floorplan by a third party, we cannot guarantee that the floorplan has been measured in accordance with IPMS. Purchasers or prospective tenants must satisfy themselves of all of the aforementioned by independent inspection or otherwise. Our images only represent part of the property as it appeared at the time they were taken and do not represent the furnishings included; these are confirmed in a separate inventory. If you require further information, please contact us. *Administration fees may apply depending on tenancy type. Please contact your local branch for this information.