



**DIDDINGTON LANE, HAMPTON-IN-ARDEN, B92**  
£2,700 per month\*

**Carter Jonas**



# DIDDINGTON LANE, HAMPTON-IN-ARDEN,

A large semi detached family home with accommodation over three levels with a mature garden and off street parking for several cars.

The accommodation comprises: entrance hall, two reception rooms, downstairs cloakroom, kitchen, further reception room and utility room. To the first floor are five bedrooms, shower room, WC and separate family bathroom. To the second floor are two further bedrooms with bathroom

Externally the property includes a long narrow garden with mature trees and hedging. At the front of the property there is off road parking and garage.

Available unfurnished from late November for an initial 12 month term.

Mains gas, electricity, water and drainage are connected to the property.

Council Tax Band G - Please see Solihull Council's website for current cost / EPC Rating E

- Council Tax = G
- Deposit Required = £3,115.00
- Minimum term 12 months
- 7 Bedrooms
- 3 Bath/Shower
- Rooms
- 2 Receptions
- Kitchen
- Utility
- Cloakroom
- Study/Computer Room
- Gardens
- Garage
- Off street parking
- EPC = E

Energy Efficiency Rating		
	Current	Potential
Very energy efficient - lower running costs		
(92-100) <b>A</b>		
(81-91) <b>B</b>		
(69-80) <b>C</b>		
(55-68) <b>D</b>		
(39-54) <b>E</b>		
(21-38) <b>F</b>		
(1-20) <b>G</b>		
Not energy efficient - higher running costs		
England, Scotland & Wales	EU Directive 2002/91/EC	

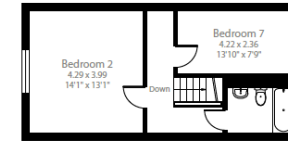
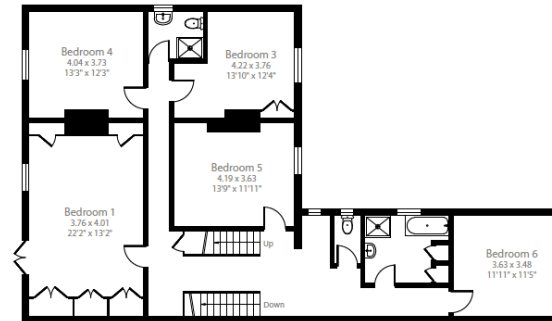
## Diddington Lane, Hampton-in-Arden, Solihull, B92

Approximate Area = 3193 sq ft / 296.6 sq m

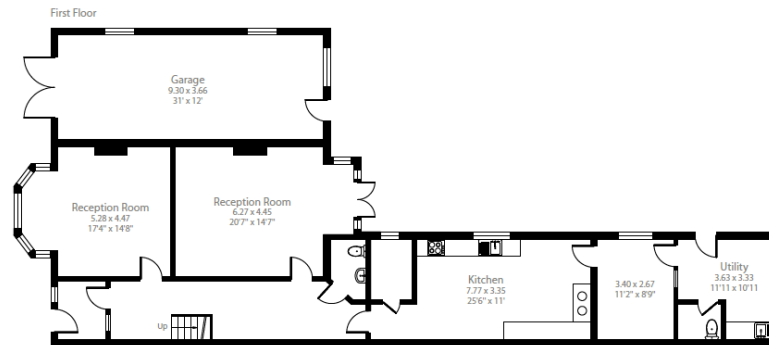
Garage = 366 sq ft / 34 sq m

Total = 3559 sq ft / 330.6 sq m

For identification only - Not to scale



Second Floor



Ground Floor



Floor plan produced in accordance with RICS Property Measurement Standards incorporating International Property Measurement Standards (IPMS2 Residential). © richrecom 2023. Produced for Carter Jonas. REF: 990260



**Oxford Lettings 01865 511444**

oxfordresilettings@carterjonas.co.uk

Mayfield House, 256 Banbury Road, Oxford, Oxfordshire, OX2 7DE



Exclusive UK affiliate of

**CHRISTIE'S**  
INTERNATIONAL REAL ESTATE

Classification L2 - Business Data

### IMPORTANT INFORMATION

These particulars are for general information purposes only and do not represent an offer or contract or part of one. Carter Jonas or anyone in their employment has made every attempt to ensure that the particulars and other information provided are as accurate as possible and they are not intended to amount to advice on which you should rely as being factually accurate. Full information which may be relevant to your decision regarding the property can be found on the property listing on carterjonas.co.uk or a separately available material information sheet, and we would advise you to confirm the details of any material information prior to any offer being submitted. You should not assume that the property has all necessary planning, building regulations or other consents and Carter Jonas has not tested any services, facilities, or equipment. Any measurements and distances given are approximate only. Where Carter Jonas has been provided with a floorplan by a third party, we cannot guarantee that the floorplan has been measured in accordance with IPMS. Purchasers or prospective tenants must satisfy themselves of all of the aforementioned by independent inspection or otherwise. Our images only represent part of the property as it appeared at the time they were taken and do not represent the furnishings included; these are confirmed in a separate inventory. If you require further information, please contact us. \*Administration fees may apply depending on tenancy type. Please contact your local branch for this information.