



**FEARNLEY CLOSE, GLEBE FARM, MK17**  
£1,950 per month\*

**Carter Jonas**



# FEARNLEY CLOSE, GLEBE FARM, MK17

A modern semi-detached house with accommodation over three floors in this convenient location.

Accommodation Comprising: Entrance Hall, Kitchen/Breakfast Room, Cloakroom Wc, Sitting Room, Bedroom, Family Bathroom with shower over bath tub, Study, Bedroom, Principle bedroom with en suite shower room. Garden and off street parking.

Available unfurnished/furnished from 22nd April 2025 for an initial 12 month term.

EPC Rating (B). Council Tax Band (D) (please see Milton Keynes Council Website for current cost)

One pet considered. No access to Loft. Mains gas, electricity, water and drainage. Gas central Heating.

Internet & Mobile: Further information on availability and speeds can be found at [checker.ofcom.org.uk](http://checker.ofcom.org.uk)

The property is freehold.

Flood Risk - Very Low

At a rent of £1,950.00 per calendar month

Holding deposit of 1 week's rent £450.00

Security deposit of 5 weeks rent £2,250.00

Energy Efficiency Rating		
	Current	Potential
Very energy efficient - lower running costs		
(92-100) A		95
(81-91) B	85	
(69-80) C		
(55-68) D		
(39-54) E		
(21-38) F		
(1-20) G		
Not energy efficient - higher running costs		
England, Scotland & Wales	EU Directive 2002/91/EC	

- Council Tax Band = D
- Deposit Required = £2,250.00
- Minimum term 12 months
- 3 bedrooms
- 2 bathrooms
- 1 reception
- 1 parking space
- unfurnished
- Long term
- Professionally managed
- Corporate Landlord
- EPC = B

Oxford Lettings 01865 511444

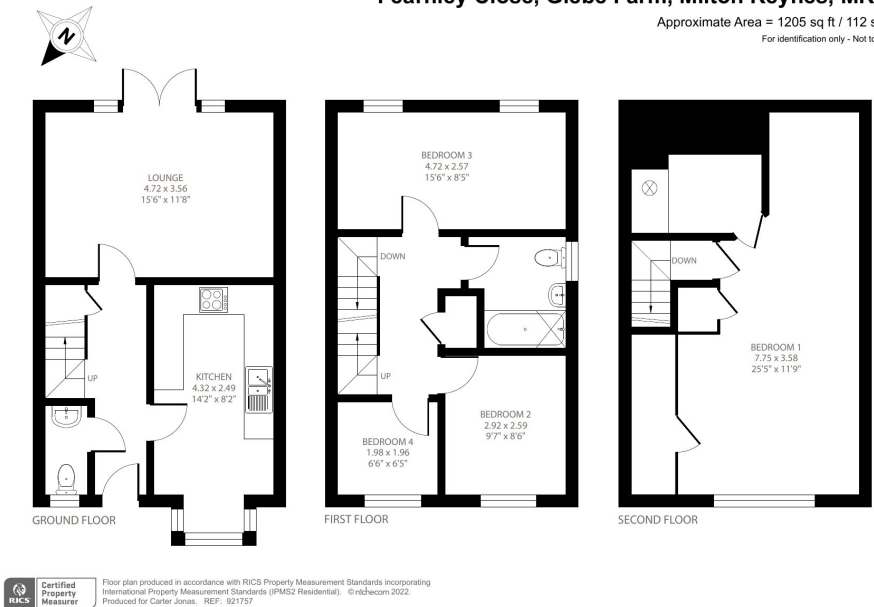
[oxfordresilettings@carterjonas.co.uk](mailto:oxfordresilettings@carterjonas.co.uk)

Mayfield House, 256 Banbury Road, Oxford, Oxfordshire, OX2 7DE



Fearnley Close, Glebe Farm, Milton Keynes, MK17

Approximate Area = 1205 sq ft / 112 sq m  
For identification only - Not to scale



## IMPORTANT INFORMATION

These particulars are for general information purposes only and do not represent an offer or contract or part of one. Carter Jonas or anyone in their employment has made every attempt to ensure that the particulars and other information provided are as accurate as possible and they are not intended to amount to advice on which you should rely as being factually accurate. Full information which may be relevant to your decision regarding the property can be found on the property listing on [carterjonas.co.uk](http://carterjonas.co.uk) or a separately available material information sheet, and we would advise you to confirm the details of any material information prior to any offer being submitted. You should not assume that the property has all necessary planning, building regulations or other consents and Carter Jonas has not tested any services, facilities, or equipment. Any measurements and distances given are approximate only. Where Carter Jonas has been provided with a floorplan by a third party, we cannot guarantee that the floorplan has been measured in accordance with IPMS. Purchasers or prospective tenants must satisfy themselves of all of the aforementioned by independent inspection or otherwise. Our images only represent part of the property as it appeared at the time they were taken and do not represent the furnishings included; these are confirmed in a separate inventory. If you require further information, please contact us. \*Administration fees may apply depending on tenancy type. Please contact your local branch for this information.