



**GRANDPONT PLACE, LONGFORD CLOSE, OX1**  
£1,695 per month\*

**Carter Jonas**



# GRANDPONT PLACE, LONGFORD CLOSE, OXFORD, OXFORDSHIRE, OX1 4NH

A ground floor apartment situated in this popular area of Oxford just a short walk from the city centre.

- 2 Bedrooms
- 1 Reception
- 1 Bathroom
- Parking Space
- Unfurnished

## THE PROPERTY

Comprising : Entrance hall, reception room, kitchen, 2 bedrooms, bathroom, allocated parking for one car and communal grounds. Available early July for a 12 month term unfurnished.

Mains gas, electricity and water are connected to the property.

Internet & Mobile: Further information on availability and speeds can be found at [checker.ofcom.org.uk](http://checker.ofcom.org.uk)

The property is leasehold

Flood zone 2: Medium risk

Council tax band: D please check current costs with Oxford city council.

EPC rating: C

At a rent of £1695 per calendar month.

Holding deposit = 1 weeks rent of £391

Deposit is 5 weeks rent (£1695 pcm = £1955 deposit)

## OUTSIDE



---

## ADDITIONAL INFORMATION

---

|        |   |
|--------|---|
| Offers | Available for a minimum term of 12 months longer terms will be considered |
|--------|---|

---

|         |                         |
|---------|-------------------------|
| Viewing | Strictly by appointment |
|---------|-------------------------|

---

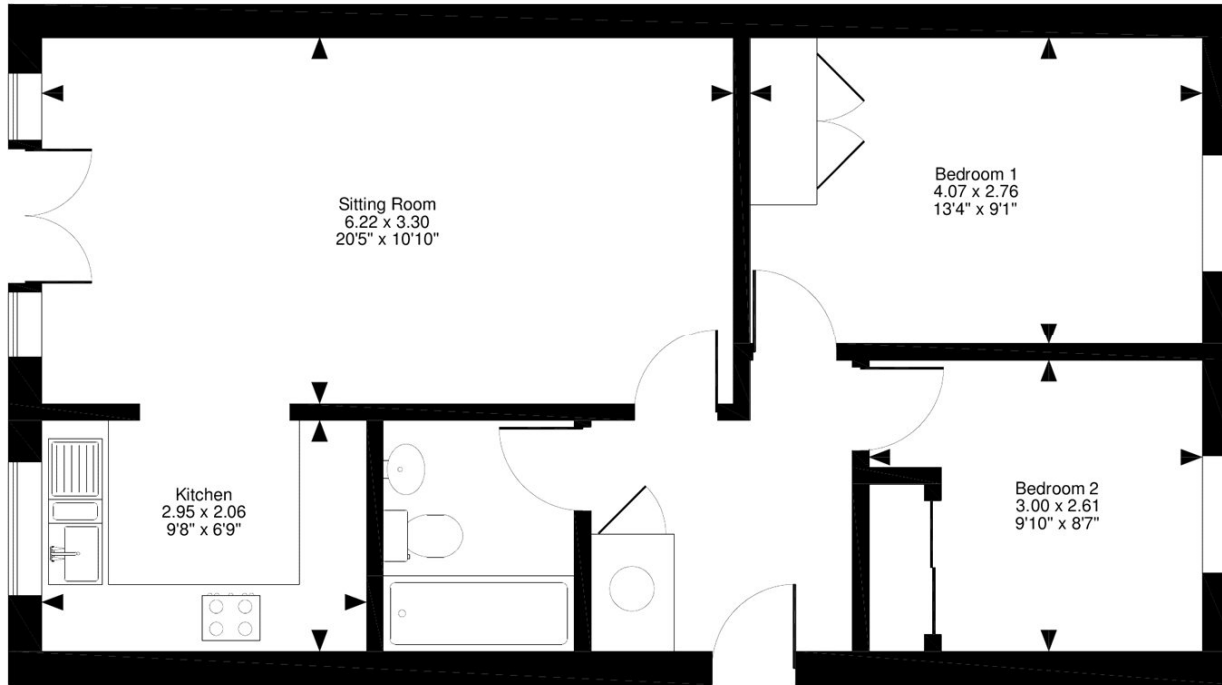
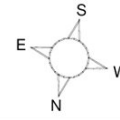
|                 |  |
|-----------------|--|
| Local Authority | Oxford City Council - Council Tax Band D |
|-----------------|--|

---





Grandpont Place, Long Ford Close, Oxford  
Approximate Gross Internal Area  
620 sq ft / 58 sq m



Ground Floor

FOR ILLUSTRATIVE PURPOSES ONLY - NOT TO SCALE

The position & size of doors, windows, appliances and other features are approximate only.  
© ehouse. Unauthorised reproduction prohibited. Drawing ref. dig/8245110/PHY

T: 01865 511444

Mayfield House, 256 Banbury Road, Oxford, Oxfordshire, OX2 7DE  
E: oxfordresilettings@carterjonas.co.uk



Exclusive UK affiliate of

**CHRISTIE'S**  
INTERNATIONAL REAL ESTATE

Classification L2 - Business Data



**IMPORTANT INFORMATION**

These particulars are for general information purposes only and do not represent an offer or contract or part of one. Carter Jonas or anyone in their employment has made every attempt to ensure that the particulars and other information provided are as accurate as possible and they are not intended to amount to advice on which you should rely as being factually accurate. Full information which may be relevant to your decision regarding the property can be found on the property listing on [carterjonas.co.uk](http://carterjonas.co.uk) or a separately available material information sheet, and we would advise you to confirm the details of any material information prior to any offer being submitted. You should not assume that the property has all necessary planning, building regulations or other consents and Carter Jonas has not tested any services, facilities, or equipment. Any measurements and distances given are approximate only. Where Carter Jonas has been provided with a floorplan by a third party, we cannot guarantee that the floorplan has been measured in accordance with IPMS. Purchasers or prospective tenants must satisfy themselves of all of the aforementioned by independent inspection or otherwise. Our images only represent part of the property as it appeared at the time they were taken and do not represent the furnishings included; these are confirmed in a separate inventory. If you require further information, please contact us. \*Administration fees may apply depending on tenancy type. Please contact your local branch for this information.