



**BANBURY ROAD, OXFORD, OX2**  
£1,600 per month\*

**Carter Jonas**



---

## BANBURY ROAD, OXFORD, OX2 7PL

A two bedroom ground floor apartment with a study in popular Banbury Road/North Oxford location.

- 2 bedrooms
- 1 study
- 1 bathroom
- 1 reception room
- unfurnished
- garage

### THE PROPERTY

Accommodation consists: Two double bedrooms. Bathroom with separate shower and bath. Kitchen with appliances. Large front facing living room with bay window. Further reception room/study, ideal space for working from home. Externally the property has a garage and a communal garden.

Situated in North Oxford providing good access to all the day to day shopping facilities of Summertown including Marks & Spencer's, bars and restaurants.

The Woodstock and Banbury roads join directly to the Oxford ring road connecting to the A40 and M40 to London. The Oxford rail station has regular services directly to London Paddington.

The property is available from mid August, for a minimum 12 month tenancy on an unfurnished basis.

Council Tax Band D/EPC D

Holding deposit = 1 weeks rent of £369

Deposit is 5 weeks rent (1,600 pcm = £1846 deposit)



---

## ADDITIONAL INFORMATION

---

Offers	Available for a minimum term of 12 months longer terms will be considered
--------	---

---

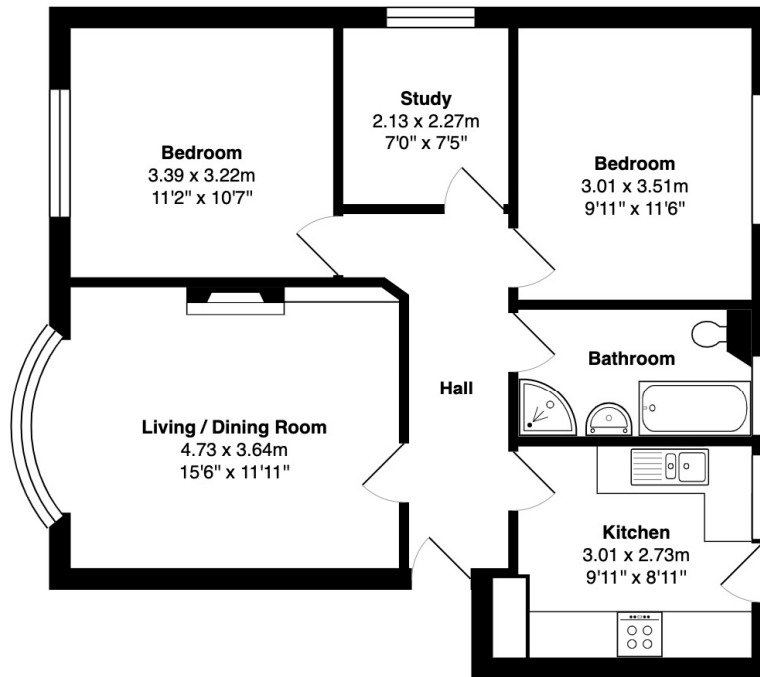
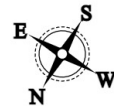
Viewing	Strictly by appointment
---------	-------------------------

---

Local Authority	Oxford City Council - Council Tax Band D
-----------------	--

---





**Ground Floor**

Approx. Gross Internal Area: 66.1 m<sup>2</sup> ... 712 ft<sup>2</sup>

Whilst every attempt has been made to ensure the accuracy of the floor plan contained here, measurements of doors, windows, rooms, and any other items are approximate. No responsibility is taken for any error, omission, or mis-statement. This plan is for illustrative purpose only and should be used as such.  
Drawn by E8 Property Services. [www.e8ps.co.uk](http://www.e8ps.co.uk)

**T: 01865 511444**

Mayfield House, 256 Banbury Road, Oxford, Oxfordshire, OX2 7DE  
E: [oxfordresilettings@carterjonas.co.uk](mailto:oxfordresilettings@carterjonas.co.uk)



*Exclusive UK affiliate of*

**CHRISTIE'S**  
INTERNATIONAL REAL ESTATE

Classification L2 - Business Data



#### **IMPORTANT INFORMATION**

These particulars are for general information purposes only and do not represent an offer or contract or part of one. Carter Jonas or anyone in their employment has made every attempt to ensure that the particulars and other information provided are as accurate as possible and they are not intended to amount to advice on which you should rely as being factually accurate. Full information which may be relevant to your decision regarding the property can be found on the property listing on [carterjonas.co.uk](http://carterjonas.co.uk) or a separately available material information sheet, and we would advise you to confirm the details of any material information prior to any offer being submitted. You should not assume that the property has all necessary planning, building regulations or other consents and Carter Jonas has not tested any services, facilities, or equipment. Any measurements and distances given are approximate only. Where Carter Jonas has been provided with a floorplan by a third party, we cannot guarantee that the floorplan has been measured in accordance with IPMS. Purchasers or prospective tenants must satisfy themselves of all of the aforementioned by independent inspection or otherwise. Our images only represent part of the property as it appeared at the time they were taken and do not represent the furnishings included; these are confirmed in a separate inventory. If you require further information, please contact us. \*Administration fees may apply depending on tenancy type. Please contact your local branch for this information.