



**CUNLIFFE CLOSE, OXFORD, OX2**  
£2,300 per month\*

**Carter Jonas**

---

## CUNLIFFE CLOSE, OXFORD, OXFORDSHIRE, OX2 7BL

A beautifully refurbished, light and spacious second floor apartment in North Oxford. Available now!

- Hallway
- Living room/Diner
- Kitchen
- Two double bedrooms
- Family bathroom
- Separate WC
- Furnished
- Residents parking

### THE PROPERTY

A beautiful, recently refurbished second floor apartment with a west facing balcony on very desirable Cunliffe Close.

Located on the top floor, the apartment is exceptionally bright offering two bedrooms, a generous kitchen and living room designed for a dining table at one end near the kitchen and seating area with view across the balcony and beyond.

The comprehensive kitchen features Lamona appliances with plenty of wall and base units giving ample storage. Both the bedrooms have built in wardrobes and a good size shower room with a further separate WC. The apartment offers excellent storage throughout. The property is set in neatly tended grounds.

The property lies to the rear of the Close just off Banbury Road in this attractive parkland setting.

Nearby Summertown provides a range of everyday shops, restaurants and cafes, doctors and dentists, public library and leisure centre with swimming pool. It is a sought after suburb of Oxford, very conveniently located for all the popular North and central Oxford schools and the Oxford colleges.

It is also well placed for road travel, with easy access to Oxford ring road, leading to the M40 and A34. There are cycle lanes and a frequent bus service along Banbury Road into the city centre and, to the north, is Oxford Parkway, with a regular train service to London Marylebone. in just under one hour.



The property comes furnished as per the marketing photos. Available from mid June.

No access to Loft. Mains gas, electricity, water and drainage. Gas Central Heating.

Internet & Mobile: Further information on availability and speeds can be found at [checker.ofcom.org.uk](http://checker.ofcom.org.uk)

Flood Zone (1) – Low

Council Tax Band - D please see Oxford City Council Website for current cost.

EPC - C

At a rent of £2,300 per calendar month

Holding deposit of 1 week's rent £530

Security deposit of 5 weeks rent £2,653

---

## ADDITIONAL INFORMATION

---

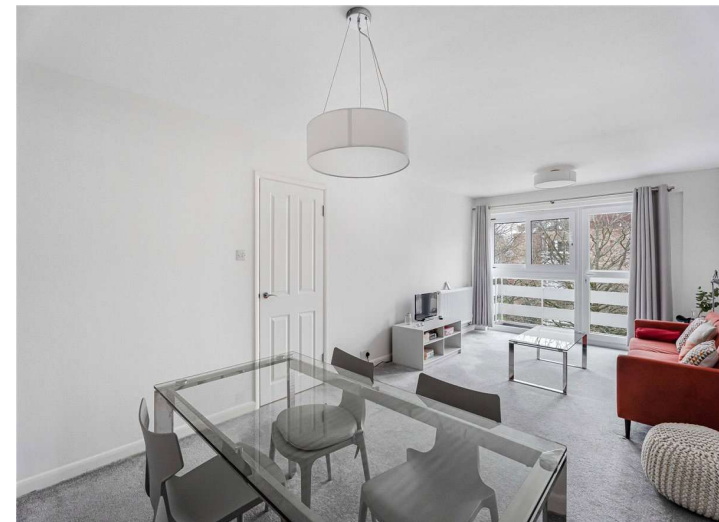
Viewing Strictly by appointment

---

Local Authority Oxford City Council - Council Tax Band D

---

Directions



---

T: 01865 511444

Mayfield House, 256 Banbury Road, Oxford, Oxfordshire, OX2 7DE

E: oxford.lettings@carterjonas.co.uk

A member of

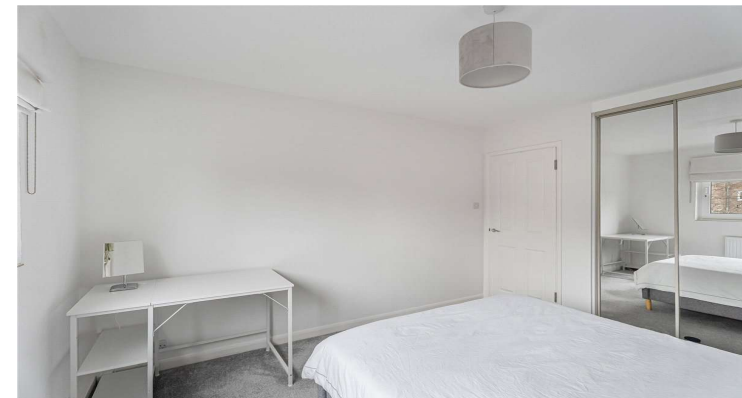


---

*Exclusive UK affiliate of*

**CHRISTIE'S**  
INTERNATIONAL REAL ESTATE

Classification L2 - Business Data



**IMPORTANT INFORMATION**

These particulars are for general information purposes only and do not represent an offer or contract or part of one. Carter Jonas or anyone in their employment has made every attempt to ensure that the particulars and other information provided are as accurate as possible and they are not intended to amount to advice on which you should rely as being factually accurate. Full information which may be relevant to your decision regarding the property can be found on the property listing on [carterjonas.co.uk](http://carterjonas.co.uk) or a separately available material information sheet, and we would advise you to confirm the details of any material information prior to any offer being submitted. You should not assume that the property has all necessary planning, building regulations or other consents and Carter Jonas has not tested any services, facilities, or equipment. Any measurements and distances given are approximate only. Where Carter Jonas has been provided with a floorplan by a third party, we cannot guarantee that the floorplan has been measured in accordance with IPMS. Purchasers or prospective tenants must satisfy themselves of all of the aforementioned by independent inspection or otherwise. Our images only represent part of the property as it appeared at the time they were taken and do not represent the furnishings included; these are confirmed in a separate inventory. If you require further information, please contact us. \*Administration fees may apply depending on tenancy type. Please contact your local branch for this information.