



**GRESWELL STREET, LONDON, SW6**  
£2,400 per month\*

**Carter Jonas**



---

## **GFF, GRESWELL STREET, SW6**

A recently renovated two-bedroom garden flat on the ground floor of a period property located within the popular 'Alphabet Streets' of Bishops Park.

**EPC rating D**

### **AMENITIES**

- Two double bedrooms
- Reception room
- Kitchen
- Bathroom
- Conservatory
- Shared garden

### **THE PROPERTY**

The property comprises a bright reception room with bay window, two double bedrooms, guest bathroom with shower and eat-in kitchen with attached rear conservatory.

The property also benefits from direct access to a beautiful shared garden.

### **LOCATION**

Greswell Street is a quiet and popular residential street running west off the Fulham Palace Road towards the river. Good local shopping and transport facilities are nearby and Bishops Park is within easy walking distance.



Offered on unfurnished basis.

Holding deposit: 1 week's rent

Security deposit: 5 weeks' rent

Council Tax band D

Minimum term 12 months

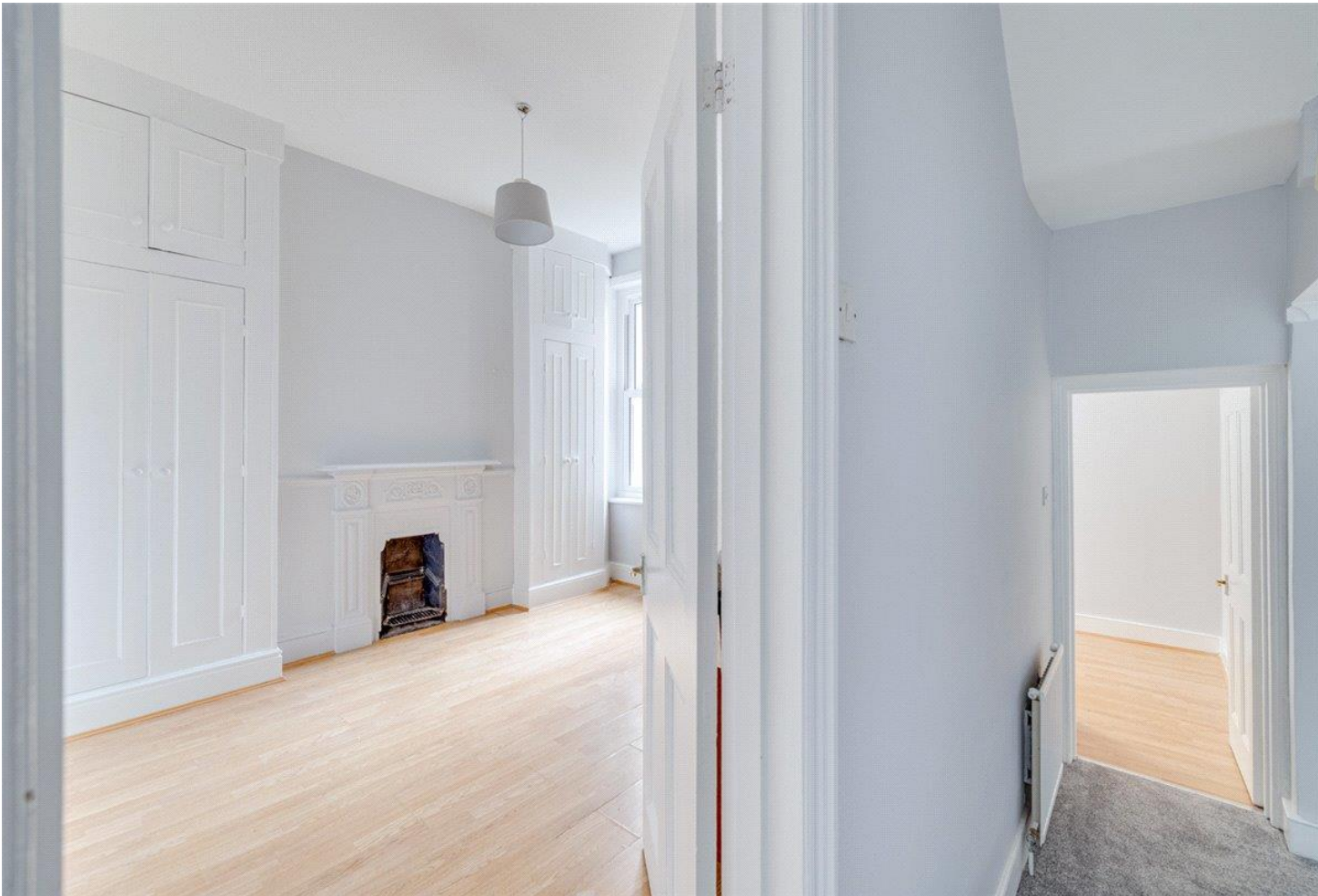
Pets considered

---

### ADDITIONAL INFORMATION

Offers	Available for a minimum term of 12 months Longer terms will be considered
Viewing	Strictly by appointment
Local Authority	Hammersmith and Fulham Council Tax Band E

---

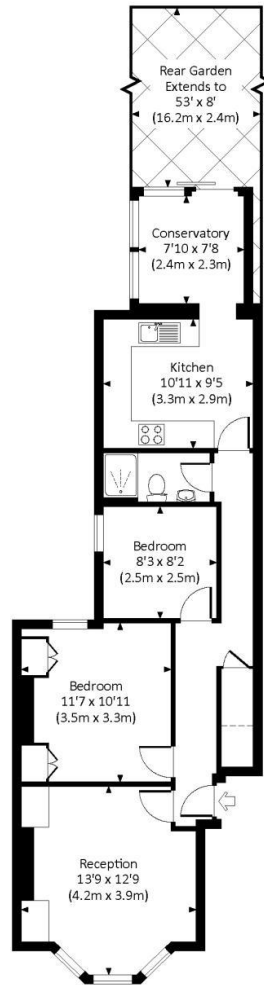




## GRESWELL STREET, SW6

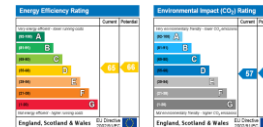
Approx. gross internal area 660 Sq Ft. / 61.3 Sq M.

Approx. gross internal area 668 Sq Ft. / 62.1 Sq M. Inc. Restricted Height



GROUND FLOOR

All measurements are approximate and for illustration purposes only as defined by the RICS Code of Measuring Practice © 2015  
Dowling Jones Design www.dowlingjones.com 020 7610 9933



T: 020 7751 8898

361 Fulham Palace Road, London, SW6 6TA

E: fulhamlettings@carterjonas.co.uk



Exclusive UK affiliate of

**CHRISTIE'S**  
INTERNATIONAL REAL ESTATE

Classification L2 - Business Data

### IMPORTANT INFORMATION

These particulars are for general information purposes only and do not represent an offer or contract or part of one. Carter Jonas or anyone in their employment has made every attempt to ensure that the particulars and other information provided are as accurate as possible and they are not intended to amount to advice on which you should rely as being factually accurate. Full information which may be relevant to your decision regarding the property can be found on the property listing on [carterjonas.co.uk](http://carterjonas.co.uk) or a separately available material information sheet, and we would advise you to confirm the details of any material information prior to any offer being submitted. You should not assume that the property has all necessary planning, building regulations or other consents and Carter Jonas has not tested any services, facilities, or equipment. Any measurements and distances given are approximate only. Where Carter Jonas has been provided with a floorplan by a third party, we cannot guarantee that the floorplan has been measured in accordance with IPMS. Purchasers or prospective tenants must satisfy themselves of all of the aforementioned by independent inspection or otherwise. Our images only represent part of the property as it appeared at the time they were taken and do not represent the furnishings included; these are confirmed in a separate inventory. If you require further information, please contact us. \*Administration fees may apply depending on tenancy type. Please contact your local branch for this information.