



LANGTHORNE STREET, LONDON, SW6
£3,750 per month*

Carter Jonas

GFF, LANGTHORNE STREET, LONDON, SW6 6JY

- Three bedroom Edwardian apartment
- Two bathrooms (one en-suite)
- Large garden
- Fully fitted kitchen with a wine fridge
- Shed
- Excellent location on Alphabet Streets

LOCATION

Langthorne Street is situated in the sought after Alphabet Streets of the Bishops Park Estate. Running towards the river off Fulham Palace Road, it is conveniently located to take advantage of Fulham's recently refurbished, tranquil Bishops Park and the local area's shops, restaurants and sports facilities (tennis courts and gym). The Thames path, Nuffield Health Club, Little Waitrose, The River Café and the Crabtree pub are within close proximity, along with the amenities on the Fulham Palace Road. Transport links of Hammersmith Broadway (Circle, Hammersmith & City, Piccadilly and District lines) and Putney Bridge (District line) in close proximity.

THE PROPERTY

The property comprises three proportionally sized bedrooms, two bathrooms (one en-suite), a beautiful open plan fully fitted kitchen with Neff kitchen appliances and a delightful reception with bi-folding doors to a large grassy garden and a shed.

Holding deposit: 1 week's rent

Security deposit: 5 weeks' rent

Minimum term: 12 months

Council tax: Band E

Pets: considered

Parking: on street, via a permit

A recently decorated three-bedroom ground floor Edwardian property with a rear extension opening up to a beautiful garden.



OUTSIDE

Garden

ADDITIONAL INFORMATION

| | |
|-----------------|---|
| Offers | Available for a minimum term of 12 months longer terms will be considered |
| Viewing | Strictly by appointment |
| Local Authority | - Council Tax Band E |

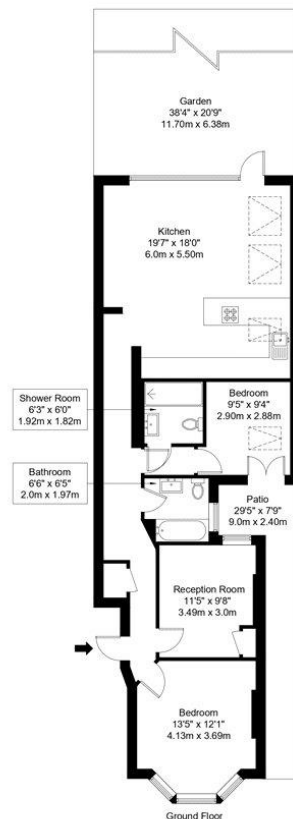


Langthorne Street, SW6 6JY

Approx Gross Internal Area = 88.72 sq m / 955 sq ft

Garden / Patio = 84.14 sq m / 906 sq ft

Total = 172.86 sq m / 1861 sq ft



Ref :

Copyright **BLEU
PLAN**

The Floor plan is not to scale and measurements and areas shown are approximate and therefore should be used for illustrative purposes only. The plan has been prepared in accordance with the RICS code of Measuring Practice and whilst we have confidence in the information produced it must not be relied on. Maximum lengths and widths are represented on the floor plan. If there is any aspect of particular importance, you should carry out or commission your own inspection of the property.

Copyright @ BLEUPLAN



T: 020 7751 8898

361 Fulham Palace Road, London, SW6 6TA

E: fulhamlettings@carterjonas.co.uk

A member of



Exclusive UK affiliate of

CHRISTIE'S
INTERNATIONAL REAL ESTATE

Classification L2 - Business Data

IMPORTANT INFORMATION

These particulars are for general information purposes only and do not represent an offer or contract or part of one. Carter Jonas or anyone in their employment has made every attempt to ensure that the particulars and other information provided are as accurate as possible and they are not intended to amount to advice on which you should rely as being factually accurate. Full information which may be relevant to your decision regarding the property can be found on the property listing on carterjonas.co.uk or a separately available material information sheet, and we would advise you to confirm the details of any material information prior to any offer being submitted. You should not assume that the property has all necessary planning, building regulations or other consents and Carter Jonas has not tested any services, facilities, or equipment. Any measurements and distances given are approximate only. Where Carter Jonas has been provided with a floorplan by a third party, we cannot guarantee that the floorplan has been measured in accordance with IPMS. Purchasers or prospective tenants must satisfy themselves of all of the aforementioned by independent inspection or otherwise. Our images only represent part of the property as it appeared at the time they were taken and do not represent the furnishings included; these are confirmed in a separate inventory. If you require further information, please contact us. *Administration fees may apply depending on tenancy type. Please contact your local branch for this information.