



ALDER LODGE, 73 STEVENAGE ROAD, SW6
£750,000

Carter Jonas

ALDER LODGE, STEVENAGE ROAD, SW6

A beautifully presented, bright and spacious two double bedroom second floor (with lift) riverside apartment in this popular purpose built portered building offering in excess of 1000 sq. ft of space and stunning river views from its west facing terrace. The property features a spacious reception/dining room providing excellent entertaining space, a well-equipped kitchen, principal bedroom with ensuite bathroom, a second double bedroom and a guest shower room/utility room. There is also the benefit of secure underground parking, a swimming pool and communal gardens.

Alder Lodge is situated on Stevenage Road which is a most sought-after residential road in the heart of Bishops Park, with the River Thames running adjacent. Putney Bridge Underground (District Line) is 1.0 mile.

AMENITIES

- Two bedrooms
- Portered mansion block
- Two bathrooms
- River views
- Balcony
- Allocated parking
- Communal swimming pool

TENURE Leasehold

LOCAL AUTHORITY Hammersmith and Fulham

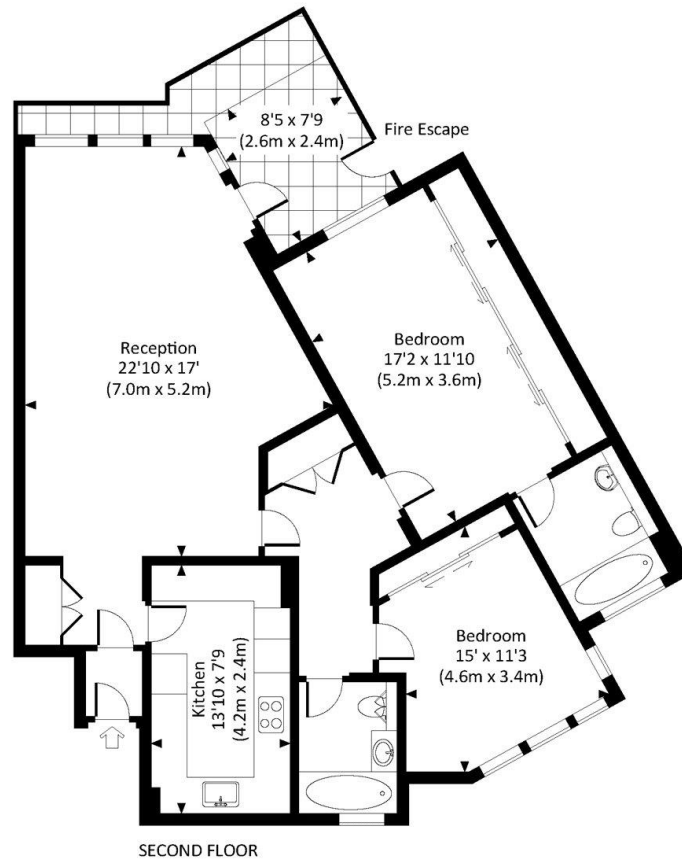
EPC BAND C

A RECENTLY REFURBISHED TWO DOUBLE BEDROOM FLAT WITH RIVER VIEWS IN THIS POPULAR PORTERED BUILDING.

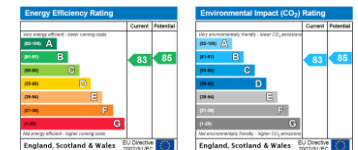




ALDER LODGE, SW6
Approx. gross internal area
998 Sq.Ft. / 92.7 Sq.M.



All measurements have been made in accordance with RICS Code of Measuring Practice which are approximate only and only for illustrative purposes. For the avoidance of doubt, Dowling Jones Design shall not be liable for any reliance on these measurements. © 2023 www.dowlingjones.com 020 7630 9933



Fulham 020 7731 3333

bishopspark@carterjonas.co.uk
361 Fulham Palace Road, London, SW6 6TA

carterjonas.co.uk
Offices throughout the UK

Exclusive UK affiliate of
CHRISTIE'S
INTERNATIONAL REAL ESTATE

IMPORTANT INFORMATION

These particulars are for general information purposes only and do not represent an offer or contract or part of one. Carter Jonas or anyone in their employment has made every attempt to ensure that the particulars and other information provided are as accurate as possible and they are not intended to amount to advice on which you should rely as being factually accurate. Full information which may be relevant to your decision regarding the property can be found on the property listing on carterjonas.co.uk or, (including off market properties) on the brochure or a separately available material information sheet. We would advise you to confirm the details of any material information prior to any offer being submitted. You should not assume that the property has all necessary planning, building regulations or other consents and Carter Jonas has not tested any services, facilities or equipment. Any measurements and distances given are approximate only. Where Carter Jonas has been provided with a floorplan by a third party, we cannot guarantee that the floorplan has been measured in accordance with IPMS. Purchasers must satisfy themselves of all of the aforementioned by independent inspection or otherwise. Our images only represent part of the property as it appeared at the time they were taken and do not represent the furnishings included; these are confirmed in a separate inventory. If you require further information, please contact us.