



**GRAYTON HOUSE, 498-504 FULHAM ROAD, SW6**  
£2,491.67 per month\*

**Carter Jonas**



# **GRAYTON HOUSE, 498-504 FULHAM ROAD, LONDON, SW6**

- One large double bedroom
- Modern apartment
- Central Fulham Broadway
- High specification throughout
- Flexible furnishings throughout
- Move date flexible

## **THE PROPERTY**

Finished to an impeccable standard throughout and located on the 2nd floor, this one bedroom apartment benefits from plenty of natural light and space.

## **LOCATION**

Located amongst the shops, bars and restaurants of Fulham Broadway, the property is also moments away from transport including the District Line and 24 hour buses into Central London.

A stunning one bedroom apartment set over 600 sq. ft. and situated within a new development located in the centre of Fulham Broadway. EPC rating C.





Furnishings flexible.

Holding deposit: 1 week rent

Security deposit: 5 weeks rent

Minimum term: 6 months

Council tax band: E

No parking

No pets

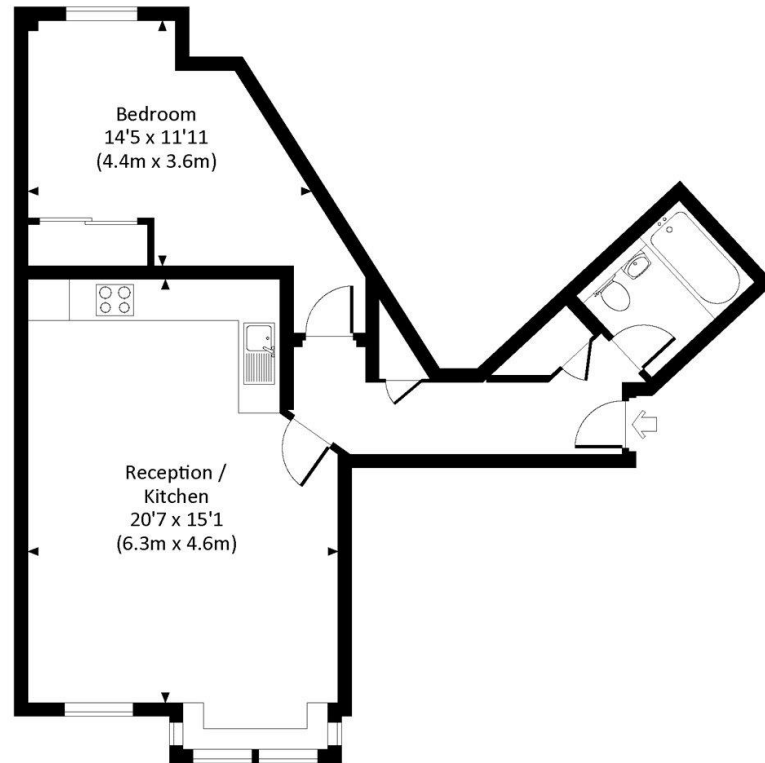
**ADDITIONAL INFORMATION**

Offers	Available for a minimum term of 12 months longer terms will be considered
Viewing	Strictly by appointment
Local Authority	Hammersmith and Fulham
	Council Tax Band F

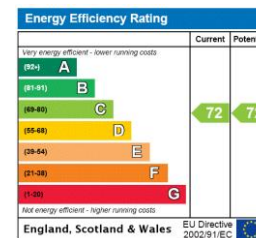


# GRAYTON HOUSE, FULHAM ROAD, SW6

Approx. gross internal area  
597 Sq Ft. / 55.5 Sq M.



SECOND FLOOR



All measurements have been made in accordance with RICS Code of Measuring Practice which are approximate only and only for illustrative purposes. For the avoidance of doubt, Dowling Jones Designs shall not be liable for any reliance on these measurements. © 2016 www.dowlingjones.com 020 7610 9933

T: 020 7751 8898

361 Fulham Palace Road, London, SW6 6TA

E: fulhamlettings@carterjonas.co.uk



Exclusive UK affiliate of

**CHRISTIE'S**  
INTERNATIONAL REAL ESTATE

Classification L2 - Business Data

## IMPORTANT INFORMATION

These particulars are for general information purposes only and do not represent an offer or contract or part of one. Carter Jonas or anyone in their employment has made every attempt to ensure that the particulars and other information provided are as accurate as possible and they are not intended to amount to advice on which you should rely as being factually accurate. Full information which may be relevant to your decision regarding the property can be found on the property listing on [carterjonas.co.uk](http://carterjonas.co.uk) or a separately available material information sheet, and we would advise you to confirm the details of any material information prior to any offer being submitted. You should not assume that the property has all necessary planning, building regulations or other consents and Carter Jonas has not tested any services, facilities, or equipment. Any measurements and distances given are approximate only. Where Carter Jonas has been provided with a floorplan by a third party, we cannot guarantee that the floorplan has been measured in accordance with IPMS. Purchasers or prospective tenants must satisfy themselves of all of the aforementioned by independent inspection or otherwise. Our images only represent part of the property as it appeared at the time they were taken and do not represent the furnishings included; these are confirmed in a separate inventory. If you require further information, please contact us. \*Administration fees may apply depending on tenancy type. Please contact your local branch for this information.