



NAPIER COURT, RANELAGH GARDENS, SW6

£3,500 per month*

Carter Jonas

NAPIER COURT, RANELAGH GARDENS, LONDON, SW6

- Three bedrooms
- Excellent condition
- Portered block
- 5th floor with lift
- Unfurnished
- Outside space
- Underground parking

THE PROPERTY

The flat comprises a bright reception room with plenty of natural light, views over the communal gardens and access to a private balcony. There is a fully fitted, spacious kitchen, three double bedrooms, a well appointed bathroom and a separate shower room.

LOCATION

Napier Court is a well maintained, purpose built development with a resident porter. The property is conveniently located close to Putney Bridge Underground station and Hurlingham Park. Further benefits include underground parking.

A spacious three bedroom flat located on the fifth floor (with lift) of a well maintained, purpose built development. EPC rating C.



Holding deposit: 1 week's rent

Security deposit: 5 weeks' rent

Council tax: Band F

No pets

Private parking

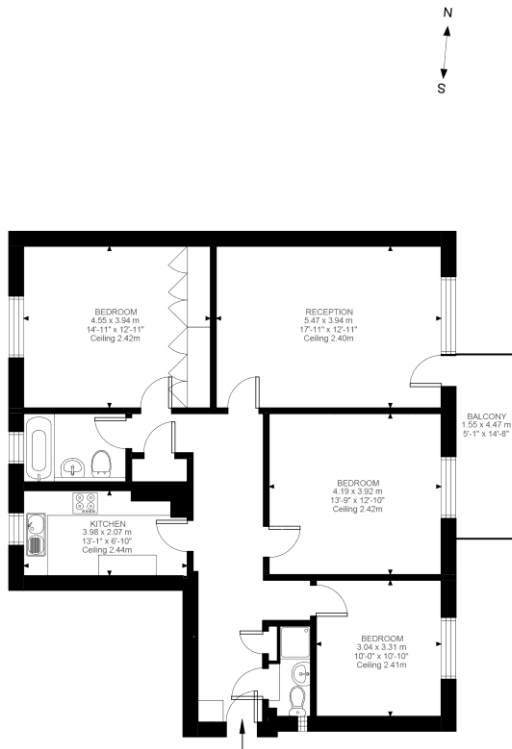
ADDITIONAL INFORMATION

| | |
|--------|---|
| Offers | Available for a minimum term of 12 months longer terms will be considered |
|--------|---|

| | |
|---------|-------------------------|
| Viewing | Strictly by appointment |
|---------|-------------------------|

| | |
|-----------------|--|
| Local Authority | Hammersmith and Fulham Council Tax Band F |
|-----------------|--|

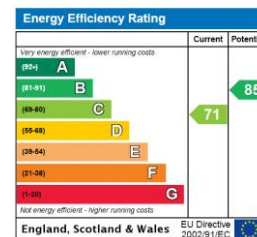




Fifth Floor
1110 ft²

Ranelagh Gardens, SW6
 Approximate Gross Internal Area
 103.15 SQ.M / 1110 SQ.FT

Illustration for identification purposes only. Not to scale.
 Floor Plan Drawn According To RICS Guidelines.



T: 020 7751 8898
 361 Fulham Palace Road, London, SW6 6TA
 E: fulhamlettings2@carterjonas.co.uk



Exclusive UK affiliate of

CHRISTIE'S
 INTERNATIONAL REAL ESTATE

Classification L2 - Business Data

IMPORTANT INFORMATION

These particulars are for general information purposes only and do not represent an offer or contract or part of one. Carter Jonas or anyone in their employment has made every attempt to ensure that the particulars and other information provided are as accurate as possible and they are not intended to amount to advice on which you should rely as being factually accurate. Full information which may be relevant to your decision regarding the property can be found on the property listing on carterjonas.co.uk or a separately available material information sheet, and we would advise you to confirm the details of any material information prior to any offer being submitted. You should not assume that the property has all necessary planning, building regulations or other consents and Carter Jonas has not tested any services, facilities, or equipment. Any measurements and distances given are approximate only. Where Carter Jonas has been provided with a floorplan by a third party, we cannot guarantee that the floorplan has been measured in accordance with IPMS. Purchasers or prospective tenants must satisfy themselves of all of the aforementioned by independent inspection or otherwise. Our images only represent part of the property as it appeared at the time they were taken and do not represent the furnishings included; these are confirmed in a separate inventory. If you require further information, please contact us. *Administration fees may apply depending on tenancy type. Please contact your local branch for this information.