



QUEENSMILL ROAD, LONDON, SW6
£1,900,000

Carter Jonas

QUEENSMILL ROAD, LONDON, SW6

AN ELEGANT FIVE-BEDROOM, THREE-BATHROOM VICTORIAN MID TERRACED HOME WITH GARDEN STUDIO, IN THE DESIRABLE ALPHABET STREETS. EPC C

This elegant five-bedroom, three-bathroom Victorian mid terraced home sits in the desirable alphabet streets, moments from the River Thames. Beautifully extended, the property retains its Victorian character while working beautifully for modern family life, with spacious interiors, high ceilings and a bright, welcoming atmosphere. The house also benefits from extant planning permission for a rear multi-level extension and full basement dig.

A standout feature is the fully functional garden studio, perfect as a home office, creative workspace, gym or teenage hang out. The garden enjoys plenty of sun, creating an inviting space for relaxation and outdoor dining.

Positioned just moments from the River Thames, the Thames Path, Bishops Park, and the newly opened Fulham Pier, the home offers a lifestyle defined by riverside walks, green spaces, and easy access to leisure. Residents can also enjoy renowned local eateries including The River Café and Sam's Brasserie, along with an excellent selection of cafés and restaurants lining the river. Transport connections are by way of Putney Bridge Underground Station (c. 0.9 miles) Hammersmith Underground Station (c. 1.1m) The area is also extremely well served by local bus routes running along Fulham Palace Road, offering quick and convenient access across West London.

This exceptional Victorian home, with its generous living space, superb garden studio, and riverside location, presents a fantastic opportunity in one of Fulham's most attractive neighbourhoods.

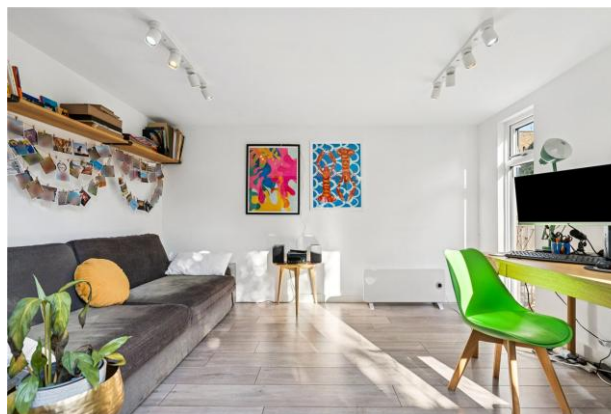
AMENITIES

- 5 Bedrooms plus study
- 3 Bathrooms plus guest WC
- Kitchen/Dining Room
- Double Reception Room
- Garden with fully functional studio room
- 2,000 sq ft of living space

TENURE Freehold

LOCAL AUTHORITY Hammersmith and Fulham


EPC BAND C





Queensmill Road, SW6

Approximate Floor Area = 193.28 sq m / 2080 sq ft
 (Including Eaves Storage & Office)
 Eaves Storage = 11.67 sq m / 126 sq ft
 Office = 10.40 sq m / 112 sq ft

 = Reduced head height below 1.5m

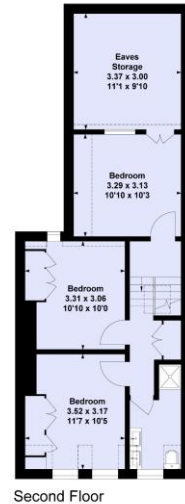


Ground Floor

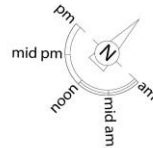
This marketing plan is for layout guidance only. Not drawn to scale unless stated. Windows & door openings are approximate. Whilst every care is taken in the preparation of this plan, please check all dimensions, shapes and compass bearings before making any decisions reliant upon them.



First Floor



Second Floor



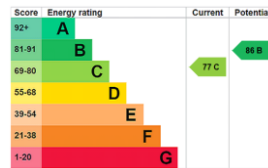
Carter Jonas

Exclusive UK affiliate of
CHRISTIE'S
 INTERNATIONAL REAL ESTATE

Fulham 020 7731 3333

bishopspark@carterjonas.co.uk
 361 Fulham Palace Road, London, SW6 6TA

carterjonas.co.uk
 Offices throughout the UK



Exclusive UK affiliate of
CHRISTIE'S
 INTERNATIONAL REAL ESTATE

IMPORTANT INFORMATION

These particulars are for general information purposes only and do not represent an offer or contract or part of one. Carter Jonas or anyone in their employment has made every attempt to ensure that the particulars and other information provided are as accurate as possible and they are not intended to amount to advice on which you should rely as being factually accurate. Full information which may be relevant to your decision regarding the property can be found on the property listing on carterjonas.co.uk or, (including off market properties) on the brochure or a separately available material information sheet. We would advise you to confirm the details of any material information prior to any offer being submitted. You should not assume that the property has all necessary planning, building regulations or other consents and Carter Jonas has not tested any services, facilities or equipment. Any measurements and distances given are approximate only. Where Carter Jonas has been provided with a floorplan by a third party, we cannot guarantee that the floorplan has been measured in accordance with IPMS. Purchasers must satisfy themselves of all of the aforementioned by independent inspection or otherwise. Our images only represent part of the property as it appeared at the time they were taken and do not represent the furnishings included; these are confirmed in a separate inventory. If you require further information, please contact us.