



KENYON STREET, LONDON, SW6
£800,000

Carter Jonas

KENYON STREET, LONDON, SW6

A fantastic opportunity to acquire a fabulous split level flat in one of Fulham's prime locations.

The first floor consists of a large bay fronted reception room, a semi open plan kitchen, two bedrooms, with fitted wardrobes, and a family bathroom. The second floor features a spacious master bedroom with en-suite bathroom, juliet balcony and ample eaves storage. The property also has the option to create a terrace (STPP).

Kenyon Street runs from Fulham Palace Road to Stevenage Road and is well located for the open spaces of Bishops Park and leafy walks along the Thames and the new Fulham Pier with restaurants, bar, members club and events. There are good local transport links nearby with Putney Bridge tube station (District line) is 1.1 mile as are the numerous restaurants and shops nearby on Fulham Road.

AMENITIES

- 3 Bedrooms
- 2 Bathrooms (one en-suite)
- Reception Room
- Kitchen
- Split Level
- Potential for terrace, subject to planning

TENURE Share of Freehold

LOCAL AUTHORITY Hammersmith and Fulham

EPC BAND D

A BEAUTIFULLY PRESENTED SPLIT-LEVEL FLAT, IN EXCESS OF 1000 SQ FT.





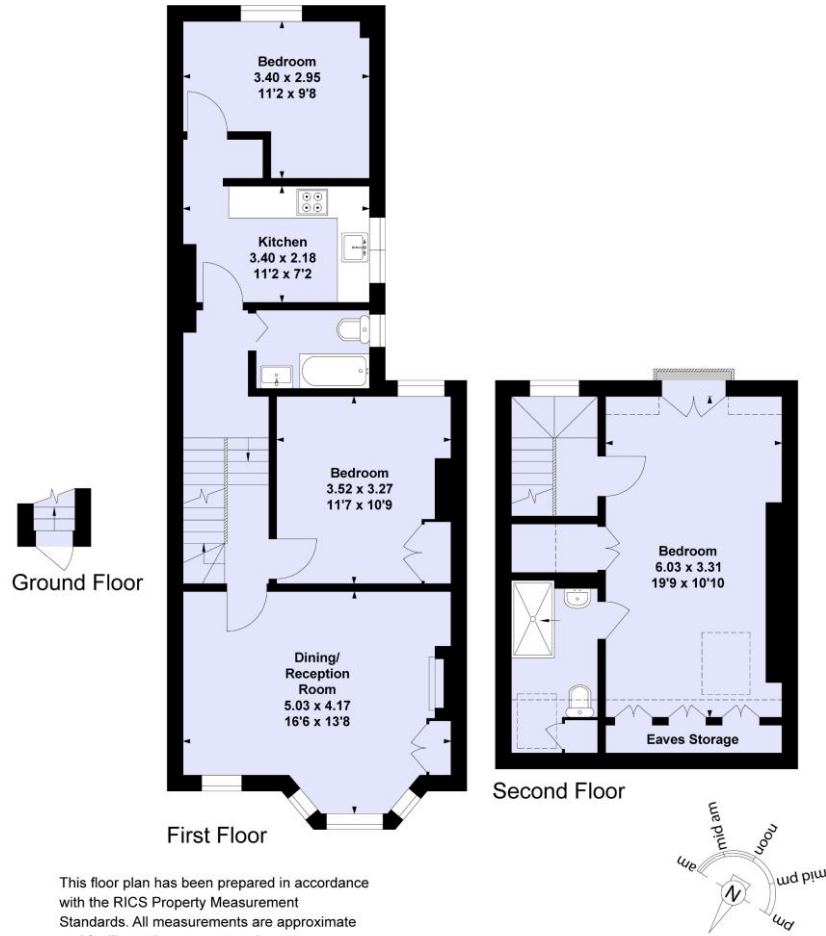
Kenyon Street, SW6

Approximate Floor Area = 95.85 sq m / 1032 sq ft

(Including Eaves Storage)

Eaves Storage = 1.72 sq m / 18 sq ft

 = Reduced head height below 1.5m



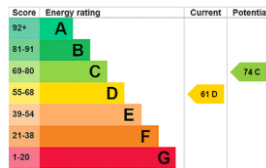
Carter Jonas

Exclusive UK affiliate of
CHRISTIE'S
INTERNATIONAL REAL ESTATE

Fulham 020 7731 3333

bishopspark@carterjonas.co.uk
361 Fulham Palace Road, London, SW6 6TA

carterjonas.co.uk
Offices throughout the UK



Exclusive UK affiliate of
CHRISTIE'S
INTERNATIONAL REAL ESTATE

IMPORTANT INFORMATION

These particulars are for general information purposes only and do not represent an offer or contract or part of one. Carter Jonas or anyone in their employment has made every attempt to ensure that the particulars and other information provided are as accurate as possible and they are not intended to amount to advice on which you should rely as being factually accurate. Full information which may be relevant to your decision regarding the property can be found on the property listing on carterjonas.co.uk or, (including off market properties) on the brochure or a separately available material information sheet. We would advise you to confirm the details of any material information prior to any offer being submitted. You should not assume that the property has all necessary planning, building regulations or other consents and Carter Jonas has not tested any services, facilities or equipment. Any measurements and distances given are approximate only. Where Carter Jonas has been provided with a floorplan by a third party, we cannot guarantee that the floorplan has been measured in accordance with IPMS. Purchasers must satisfy themselves of all of the aforementioned by independent inspection or otherwise. Our images only represent part of the property as it appeared at the time they were taken and do not represent the furnishings included; these are confirmed in a separate inventory. If you require further information, please contact us.