



SPECTRUM WAY, LONDON, SW18

Classification L2 - Business Data

BEACON TOWER, SPECTRUM WAY, LONDON, SW18

- 884 square feet
- Two generously sized bedrooms
- Two modern bathrooms
- 0.2 miles from Southside shopping centre
- Lift access
- Private balcony
- 10th floor apartment

THE PROPERTY

This contemporary home offers spacious and bright living areas with floor-to-ceiling windows, two generously sized bedrooms, two sleek modern bathrooms, and a state-of-the-art kitchen equipped with top-of-the-line appliances. Enjoy breathtaking views of the surrounding area from the tenth floor, providing a serene and picturesque backdrop.

Situated in the heart of Wandsworth, The Filaments offers a vibrant community atmosphere with easy access to local amenities, parks, and excellent transport links, making it an ideal opportunity for those seeking a luxurious and convenient lifestyle in one of London's most sought-after developments.

The flat has a large reception room, an open plan fitted kitchen with integrated appliances, a main bedroom with fitted wardrobes and en suite bathroom, a second bedroom, a main bathroom and utility cupboard. The flat has its own private balcony with wonderful panoramic views and comes with lift access and a secure entryphone system. The development has landscaped communal gardens and is situated in the heart of Wandsworth, with Southside shopping centre close by (0.2 miles).

Discover modern living at its finest in this fantastic two-bedroom, two-bathroom apartment located on the tenth floor of the prestigious new development, The Filaments.



At a rent of £2,500 per month

Holding deposit of 1 weeks rent: £576.92

Security deposit of 5 weeks rent: £2884.60

ADDITIONAL INFORMATION

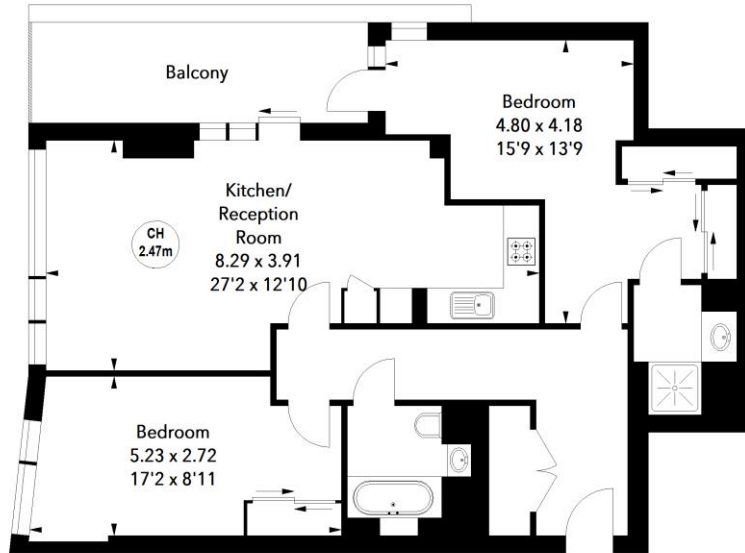
Offers	Available for a minimum term of 12 months longer terms will be considered
Viewing	Strictly by appointment
Local Authority	London Borough of Wandsworth - Council Tax Band E
Utilities	Mains electric heating and metered mains water
Internet and mobile signal	Ultrafast broadband. Mobile signal: Three, O2 and Vodafone. For more information, refer to Ofcom's website.
EPC	Ask Agent



Beacon Tower, SW18

Approximate Area = 82.12 sq m / 884 sq ft

Key :
CH - Ceiling Height



Tenth Floor

The floor plan is not to scale and measurements and areas shown are approximate and therefore should be used for illustrative purposes only. The plan has been prepared in accordance with the RICS code of Measuring Practice and whilst we have confidence in the information produced, it must not be relied on. If there is any aspect of particular importance, you should carry out or commission your own inspection of the property.



T: 020 7518 3260

24 Replingham Road, London, SW18 5LR

E: southfieldsresilets@carterjonas.co.uk

A member of



Exclusive UK affiliate of

CHRISTIE'S
INTERNATIONAL REAL ESTATE

Classification L2 - Business Data

IMPORTANT INFORMATION

These particulars are for general information purposes only and do not represent an offer or contract or part of one. Carter Jonas or anyone in their employment has made every attempt to ensure that the particulars and other information provided are as accurate as possible and they are not intended to amount to advice on which you should rely as being factually accurate. Full information which may be relevant to your decision regarding the property can be found on the property listing on carterjonas.co.uk or a separately available material information sheet, and we would advise you to confirm the details of any material information prior to any offer being submitted. You should not assume that the property has all necessary planning, building regulations or other consents and Carter Jonas has not tested any services, facilities, or equipment. Any measurements and distances given are approximate only. Where Carter Jonas has been provided with a floorplan by a third party, we cannot guarantee that the floorplan has been measured in accordance with IPMS. Purchasers or prospective tenants must satisfy themselves of all of the aforementioned by independent inspection or otherwise. Our images only represent part of the property as it appeared at the time they were taken and do not represent the furnishings included; these are confirmed in a separate inventory. If you require further information, please contact us. *Administration fees may apply depending on tenancy type. Please contact your local branch for this information.