



**AUGUSTA ROAD, TWICKENHAM, TW2**

Classification L2 - Business Data

---

# AUGUSTA ROAD, TWICKENHAM, TW2

- Twickenham Location
- Three bedrooms
- Large private garden
- Unfurnished
- House
- 873 Square Feet

## THE PROPERTY

A private portfolio landlord is delighted to present this beautifully refurbished, spacious three-bedroom semi-detached home, ideally situated in a highly desirable Twickenham location. This property has been newly decorated in a contemporary style, offering a perfect blend of modern living and comfort.

The ground floor boasts a bright and sunny reception room with high ceilings, creating an inviting atmosphere filled with natural light. The thoughtfully designed layout includes a convenient ground-floor WC and a generously sized kitchen/diner, perfect for family meals or entertaining. The kitchen opens directly onto an expansive private garden, offering ample outdoor space for relaxation, gardening, or play.

On the first floor, you'll find three well-proportioned double bedrooms, including one smaller double ideal for a guest room, home office, or nursery. The floor is completed by a modern, fully fitted family bathroom.

This property is offered unfurnished, providing the flexibility to make it truly your own. Pets are welcome, making it an ideal choice for families with furry companions. Please note that while the property is perfect for families, it can also accommodate a maximum of two sharers.

With its prime location, exceptional outdoor space, and contemporary interiors, this property is an excellent opportunity to secure a comfortable and stylish home in Twickenham.

## Spacious and Contemporary 3-Bedroom Semi-Detached Home in Sought-After Twickenham.



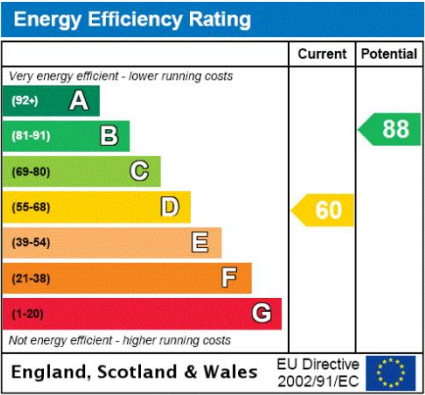
At a rent of £2,150 per month

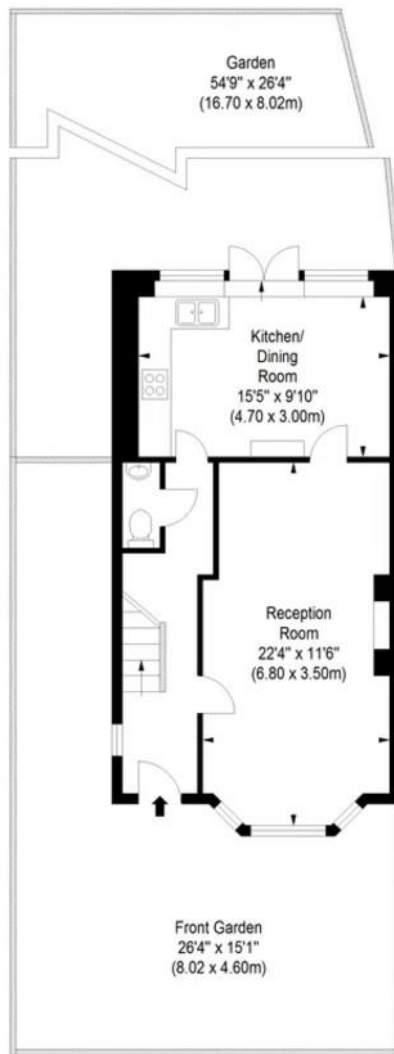
Holding deposit of 1 weeks rent - £496.15

Security deposit of 5 weeks rent - £2,480.75

ADDITIONAL INFORMATION

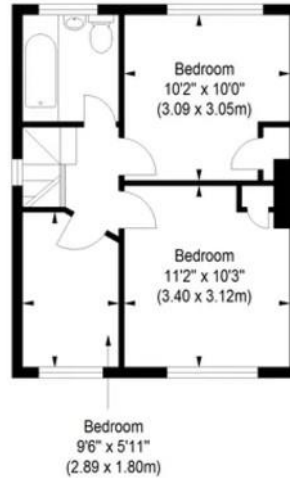
Offers	Available for a minimum term of 12 months longer terms will be considered
Viewing	Strictly by appointment
Local Authority	Richmond Borough Council - Council Tax Band D
EPC Rating	D





Ground Floor

Augusta Road, TW2  
Approximate Gross Internal Area  
873 sq ft / 81.10 sq m



First Floor

ILLUSTRATION FOR IDENTIFICATION PURPOSES ONLY

ALL MEASUREMENTS ARE MAXIMUM, AND THIS PLAN MUST NOT BE REPRODUCED WITHOUT PERMISSION. 14/14



T: 020 7518 3260

24 Replingham Road, London, SW18 5LR

E: sou.res.lets@carterjonas.co.uk



Exclusive UK affiliate of

CHRISTIE'S  
INTERNATIONAL REAL ESTATE

Classification L2 - Business Data

### IMPORTANT INFORMATION

These particulars are for general information purposes only and do not represent an offer or contract or part of one. Carter Jonas or anyone in their employment has made every attempt to ensure that the particulars and other information provided are as accurate as possible and they are not intended to amount to advice on which you should rely as being factually accurate. Full information which may be relevant to your decision regarding the property can be found on the property listing on [carterjonas.co.uk](http://carterjonas.co.uk) or a separately available material information sheet, and we would advise you to confirm the details of any material information prior to any offer being submitted. You should not assume that the property has all necessary planning, building regulations or other consents and Carter Jonas has not tested any services, facilities, or equipment. Any measurements and distances given are approximate only. Where Carter Jonas has been provided with a floorplan by a third party, we cannot guarantee that the floorplan has been measured in accordance with IPMS. Purchasers or prospective tenants must satisfy themselves of all of the aforementioned by independent inspection or otherwise. Our images only represent part of the property as it appeared at the time they were taken and do not represent the furnishings included; these are confirmed in a separate inventory. If you require further information, please contact us. \*Administration fees may apply depending on tenancy type. Please contact your local branch for this information.