



**ST. ALBANS AVENUE, LONDON, W4**  
£1,595,000

**Carter Jonas**

# ST. ALBANS AVENUE, LONDON, W4

Located on this tree lined street, this five-bedroom house is over 1800sqft with the potential to extend (stpp).

The accommodation is arranged over three floors. The ground floor comprises a double reception to the front and a kitchen to the rear, which has the potential to extend into the side return, with doors leading out to a west-facing garden.

The first floor comprises three bedrooms and a bathroom. The second floor and loft comprise a bedroom and a larger bedroom with an ensuite shower room.

St Albans Avenue is an attractive road located in the sought after Bedford Park area. The property is 960m from Turnham Green tube. The amenities of Turnham Green and Chiswick High Road are close by. There is a wide selection of outstanding or good primary schools in the area along with popular private schools.

Sole Agents. Chain free

## AMENITIES

- 960m from Turnham Green tube.
- Bedford Park Conservation Area.

**TENURE** Freehold

**LOCAL AUTHORITY** London Borough of Ealing

**EPC BAND** C

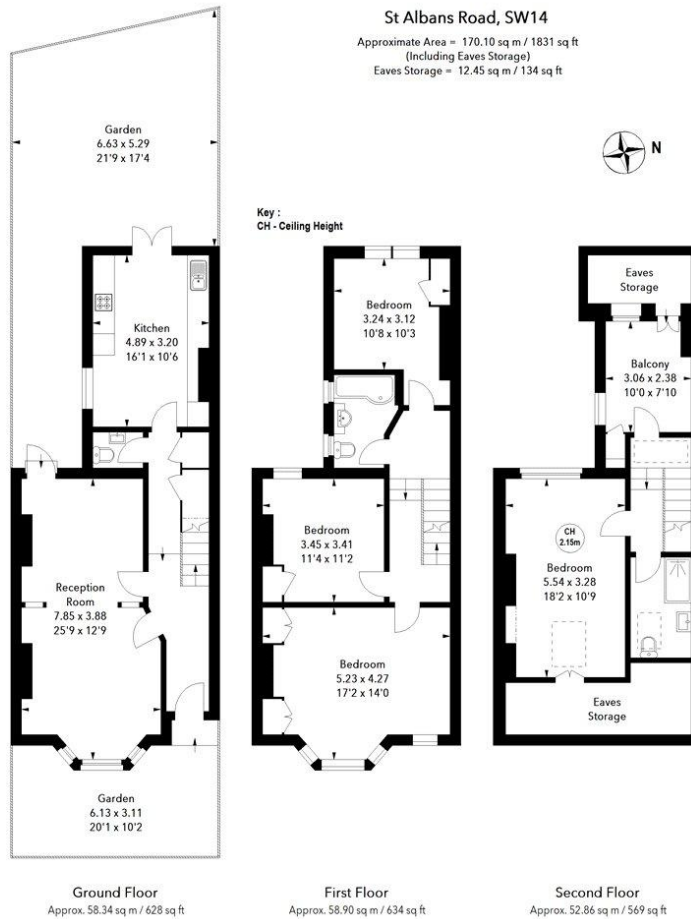
**A WELL PRESENTED FIVE BEDROOM HOUSE WITH THE POTENTIAL TO EXTEND (STTP) LOCATED ON THIS QUIET ROAD IN THE BEDFORD PARK CONSERVATION AREA.**





**St Albans Road, SW14**

Approximate Area = 170.10 sq m / 1831 sq ft  
 (Including Eaves Storage)  
 Eaves Storage = 12.45 sq m / 134 sq ft



The floor plan is not to scale and measurements and areas shown are approximate and therefore should be used for illustrative purposes only. The plan has been prepared in accordance with the RICS code of Measuring Practice and whilst we have confidence in the information produced, it must not be relied on. If there is any aspect of particular importance, you should carry out or commission your own inspection of the property.

Score	Energy rating	Current	Potential
92+	A		
81-91	B		85 B
69-80	C	71 C	
55-68	D		
39-54	E		
21-38	F		
1-20	G		

**Southfields 020 7518 3260**

southfields.sales@carterjonas.co.uk  
 24 Replingham Road, London, SW18 5LR

**carterjonas.co.uk**  
 Offices throughout the UK

*Exclusive UK affiliate of*  
**CHRISTIE'S**  
 INTERNATIONAL REAL ESTATE

**IMPORTANT INFORMATION**

These particulars are for general information purposes only and do not represent an offer or contract or part of one. Carter Jonas or anyone in their employment has made every attempt to ensure that the particulars and other information provided are as accurate as possible and they are not intended to amount to advice on which you should rely as being factually accurate. Full information which may be relevant to your decision regarding the property can be found on the property listing on carterjonas.co.uk or, (including off market properties) on the brochure or a separately available material information sheet. We would advise you to confirm the details of any material information prior to any offer being submitted. You should not assume that the property has all necessary planning, building regulations or other consents and Carter Jonas has not tested any services, facilities or equipment. Any measurements and distances given are approximate only. Where Carter Jonas has been provided with a floorplan by a third party, we cannot guarantee that the floorplan has been measured in accordance with IPMS. Purchasers must satisfy themselves of all of the aforementioned by independent inspection or otherwise. Our images only represent part of the property as it appeared at the time they were taken and do not represent the furnishings included; these are confirmed in a separate inventory. If you require further information, please contact us.