



ST. ANTHONY'S CLOSE, COLLEGE GARDENS, SW17

Carter Jonas

ST. ANTHONY'S CLOSE, COLLEGE GARDENS, SW17

This light-filled freehold house oozes understated style. Meticulously redesigned and convenient for Bellevue Village and Wandsworth Common, and the Northern Line at Tooting Bec. This immaculate house has been created and finished to suit modern living.

A palette of soft greys and off whites flow through the house complimented by wooden flooring throughout the ground floor. Substantial volumes have been achieved in the extended kitchen/diner/family room with natural light and luxurious textures combining to make a stunning space. Metal bi-fold doors open onto a stunning walled, patio garden, allowing indoor and outdoor to seamlessly blend into one. The bright kitchen space allows for convivial entertaining with a peninsular unit and ample space for a dining table. A utility cupboard houses the washing machine.

Upstairs the tranquil double bedroom benefits from plenty of wardrobe and storage space. The bathroom is a joyous affair with John Derian wallpaper and contemporary fittings.

The property is accessed through a gate into the private walled garden. There are two dedicated parking spaces outside.

The house is located on St. Anthony's Close, within College Gardens which is a quiet residential enclave, discreetly tucked away only 0.6 miles from Wandsworth Common Station, it is located just 0.4 miles from the fashionable cafes and restaurants which line Bellevue Road and overlook the Common. The Northern line at Tooting Bec is also within easy reach (0.6 miles).

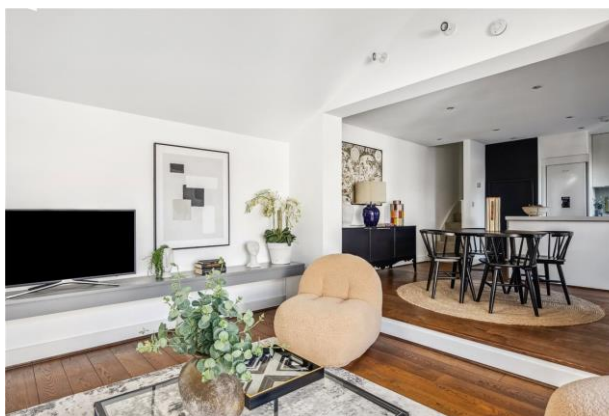
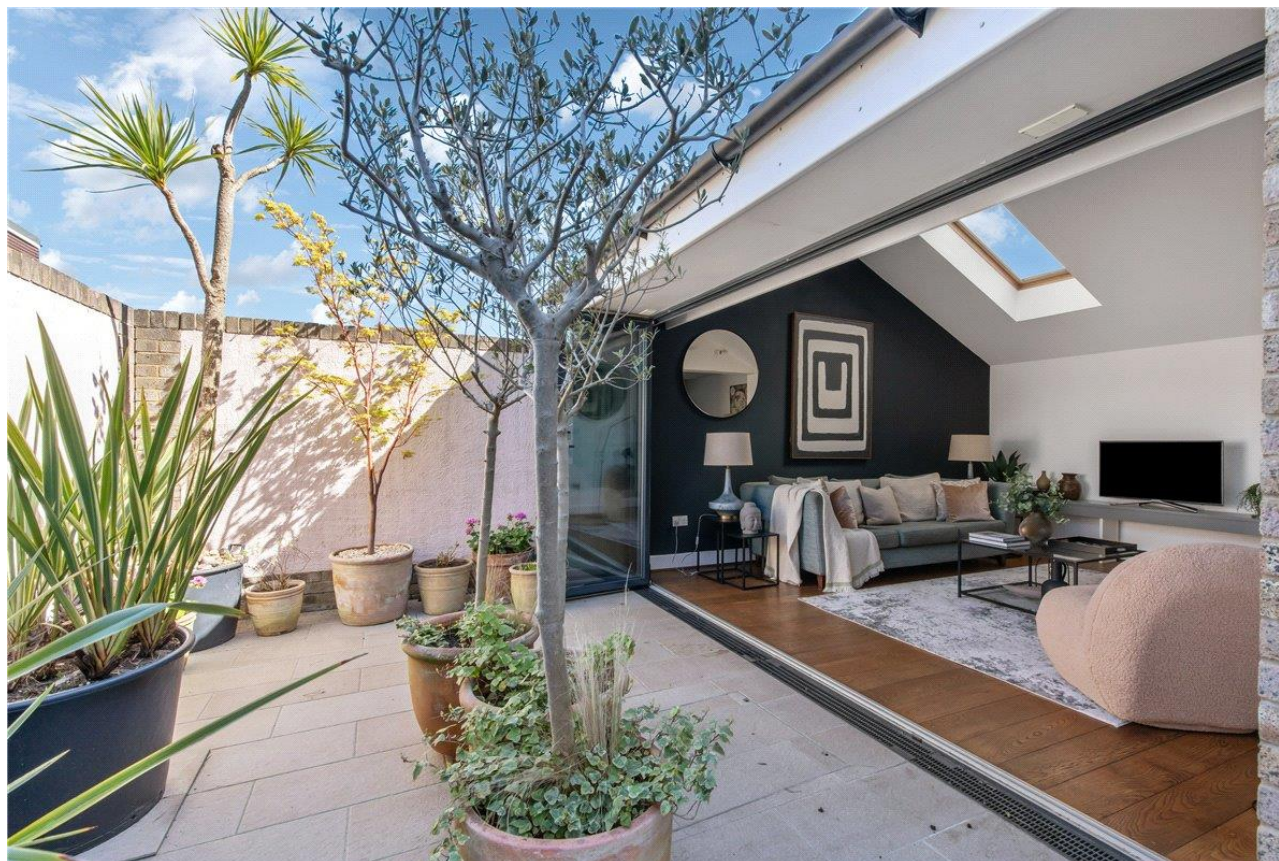
AMENITIES

- One-bedroom Freehold house
- Stunning open plan kitchen/diner/living space
- Direct access to low-maintenance patio garden
- Secure access via garden
- Two dedicated parking space
- Close to shops, amenities, and transport at Wandsworth Common
- Close to Northern Line at Tooting Bec

TENURE Freehold

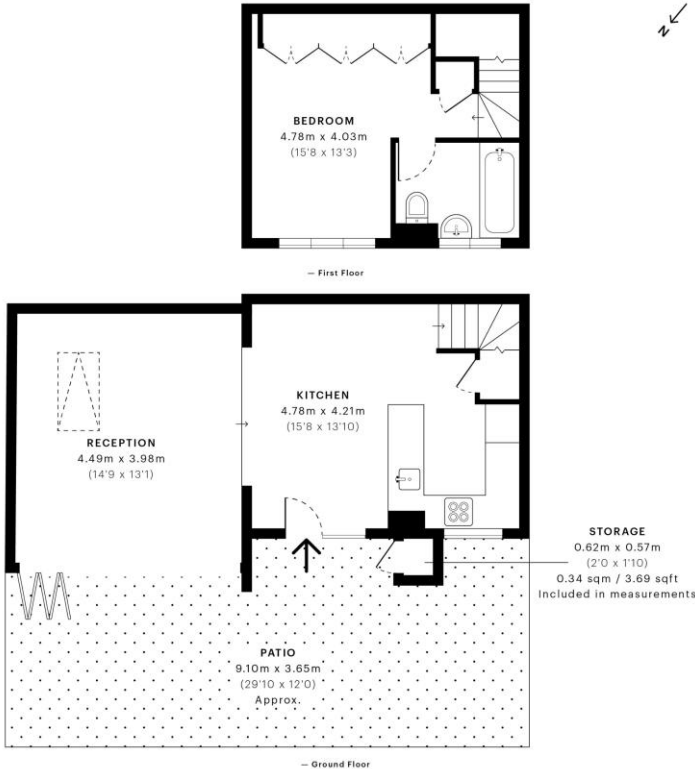
LOCAL AUTHORITY London Borough of Wandsworth

EPC BAND C









GROSS INTERNAL AREA (GIA)
The footprint of the property
58.08 sqm / 625.17 sqft

NET INTERNAL AREA (NIA)
Excludes walls and external features
Includes awnings, restricted head height
53.00 sqm / 570.49 sqft

EXTERNAL STRUCTURAL FEATURES
Balconies, terraces, verandas etc.
0.00 sqm / 0.00 sqft

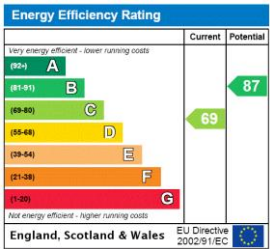
RESTRICTED HEAD HEIGHT
Limited use area under 2.0m
0.00 sqm / 0.00 sqft



Spec Verified floor plans are produced in accordance with Royal Institution of Chartered Surveyors' Property Measurement Standards. Plots and gardens are illustrative only and excluded from all area calculations. Due to rounding, numbers may not add up precisely. All measurements shown for the individual room lengths and widths are the maximum points of measurements captured in the scan.

IPW15 3B RESIDENTIAL 55.92 sqm / 601.92 sqft
IPW15 3C RESIDENTIAL 53.74 sqm / 578.45 sqft

SPIC ID: 607d53a1079e50db6a6e265



Wandsworth Sales 020 8767 7711

wandsworth@carterjonas.co.uk
19 Bellevue Road, London, SW17 7EG

carterjonas.co.uk
Offices throughout the UK

Exclusive UK affiliate of
CHRISTIE'S
INTERNATIONAL REAL ESTATE

IMPORTANT INFORMATION

These particulars are for general information purposes only and do not represent an offer of contract or part of one. Carter Jonas has made every attempt to ensure that the particulars and other information provided are as accurate as possible and are not intended to amount to advice on which you should rely as being factually accurate. You should not assume that the property has all necessary planning, building regulations or other consents and Carter Jonas have not tested any services, facilities or equipment. Any measurements and distances given are approximate only. Purchasers must satisfy themselves of all of the aforementioned by independent inspection or otherwise. Although we make reasonable efforts to update our information, neither Carter Jonas LLP nor anyone in its employment or acting on its behalf makes any representations warranties or guarantees, whether express or implied, in relation to the property, or that the content in these particulars is accurate, complete or up to date. Our images only represent part of the property as it appeared at the time they were taken. If you require further information please contact us.