



WAPPING LANE, GREAT EDSTONE, YO62
£650,000

Carter Jonas

WAPPING LANE, GREAT EDSTONE, YO62

Fairfield is a stunning, energy-efficient home in the sought-after village of Great Edstone, featuring spacious living areas, four double bedrooms, and beautifully landscaped gardens with a detached garage.

This exceptional four-bedroom detached home offers a harmonious blend of modern efficiency and timeless charm. With high levels of insulation, smart underfloor heating, LED ceiling lighting, and owned solar panels, the property ensures outstanding energy efficiency. The thoughtfully designed interior provides ample space, complemented by a lovely garden and a detached garage, making it an ideal family home.

Upon entering, you are greeted by a welcoming reception hallway that leads to a generous sitting room, featuring a cozy wood-burning stove. The bright dining room, adorned with engineered oak flooring, offers a perfect setting for family meals and gatherings. At the heart of the home lies a bespoke dining kitchen, equipped with high-quality appliances and granite work surfaces, providing a delightful space for culinary adventures. The ground floor also includes a practical utility room and a convenient cloakroom.

The first floor is home to a stunning master bedroom, complete with a vaulted ceiling and a luxurious en-suite bathroom. Three additional double bedrooms provide ample accommodation for family and guests, while a stylish family bathroom serves their needs. A boarded loft offers potential for further conversion, subject to planning permission, adding to the home's versatility.

AMENITIES

TENURE Freehold

LOCAL AUTHORITY North Yorkshire Council

EPC BAND B

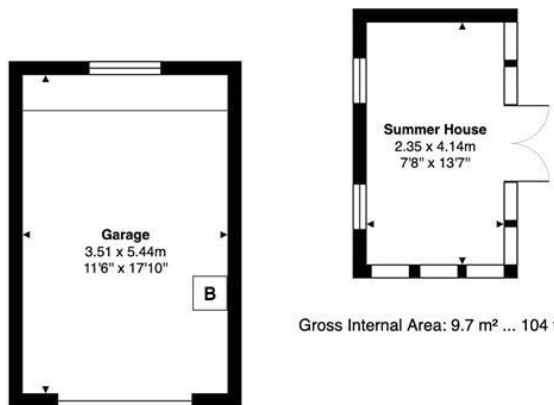
FAIRFIELD IS A STUNNING, ENERGY-EFFICIENT HOME IN THE SOUGHT-AFTER VILLAGE OF GREAT EDSTONE, FEATURING SPACIOUS LIVING AREAS, FOUR DOUBLE BEDROOMS, AND BEAUTIFULLY LANDSCAPED GARDENS WITH A DETACHED







Fairfield, Wapping Lane, Great Edstone, YO62 6PD

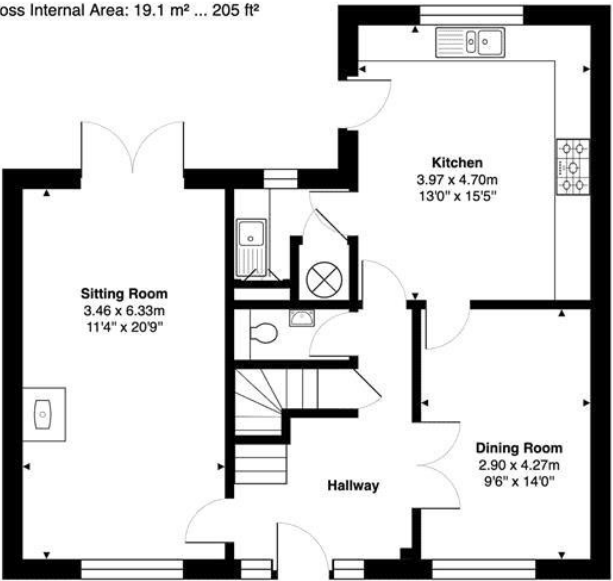


Gross Internal Area: 9.7 m² ... 104 ft²

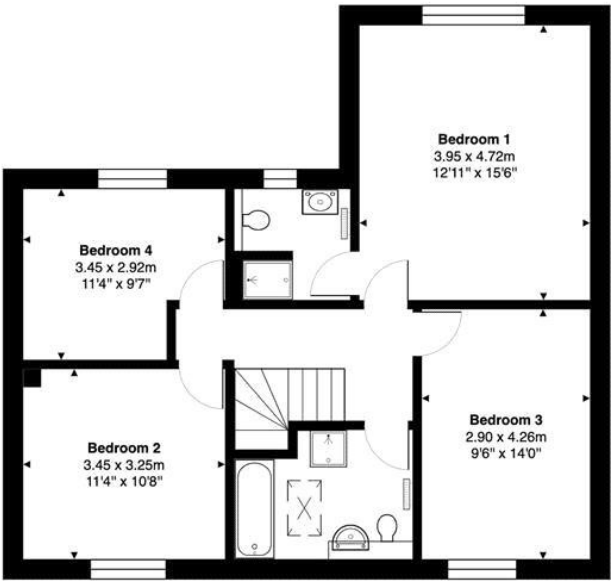
Gross Internal Area: 145.7 m² ... 1569 ft² (excluding garage, garden room)

All measurements are approximated for display purposes only and should be independently verified
Copyright © 2024 Matt Hillier Photographer
www.matthillier.co.uk

Gross Internal Area: 19.1 m² ... 205 ft²



Ground Floor
Gross Internal Area: 73.3 m² ... 789 ft²



First Floor
Gross Internal Area: 72.4 m² ... 780 ft²

Energy Efficiency Rating		Current	Potential
Very energy efficient - lower running costs			
(92-)	A	89	89
(81-91)	B		
(69-80)	C		
(55-68)	D		
(39-54)	E		
(21-38)	F		
(1-20)	G		
Not energy efficient - higher running costs			
England, Scotland & Wales		EU Directive 2002/91/EC	

York 01904 558200

york@carterjonas.co.uk
82 Micklegate, York, YO1 6LF

carterjonas.co.uk
Offices throughout the UK

IMPORTANT INFORMATION

These particulars are for general information purposes only and do not represent an offer of contract or part of one. Carter-Jonas has made every attempt to ensure that the particulars and other information provided are as accurate as possible and are not intended to amount to advice on which you should rely as being factually accurate. You should not assume that the property has all necessary planning, building regulations or other consents and Carter Jonas have not tested any services, facilities or equipment. Any measurements and distances given are approximate only. Purchasers must satisfy themselves of all of the aforementioned by independent inspection or otherwise. Although we make reasonable efforts to update our information, neither Carter Jonas LLP nor anyone in its employment or acting on its behalf makes any representations warranties or guarantees, whether express or implied, in relation to the property, or that the content in these particulars is accurate, complete or up to date. Our images only represent part of the property as it appeared at the time they were taken. If you require further information please contact us.

Classification L2 - Business Data