



**6 JOSEPH TERRY GROVE, YORK**  
£595,000

**Carter Jonas**

## 6 JOSEPH TERRY GROVE, YORK, YO23 1PU

Set within the prestigious Chocolate Works, this exceptional home offers a striking combination of contemporary design, versatile living, in a highly sought-after location.

Fitted with quality finishes throughout, the property immediately impresses with a welcoming entrance hallway leading to a stunning open-plan kitchen and dining room. This sociable space opens directly onto a beautifully maintained south-facing rear garden with shed, creating the perfect setting for entertaining. The ground floor also provides a separate utility room, convenient WC, and an office which can easily serve as a fourth bedroom.

On the first floor, a spacious living room opens onto a terraced balcony, providing a wonderful spot to relax, while a double bedroom and a well-appointed family bathroom complete this level. The second floor of the property continues to shine with a superb master bedroom featuring an en suite, alongside a further double bedroom, creating a comfortable and well-balanced layout suited to modern living.

Ideally positioned, the development is within easy reach of York Racecourse and Knavesmire, as well as the vibrant Bishopthorpe Road and the historic York city centre. The property also benefits from excellent transport connections, with the York railway station and the outer ring road, making commuting and travel further afield straightforward, while allocated off-street parking adds further practicality to this superb home.

Annual Service Charge: £353.32 approx.

**TENURE** Freehold

**LOCAL AUTHORITY** City of York

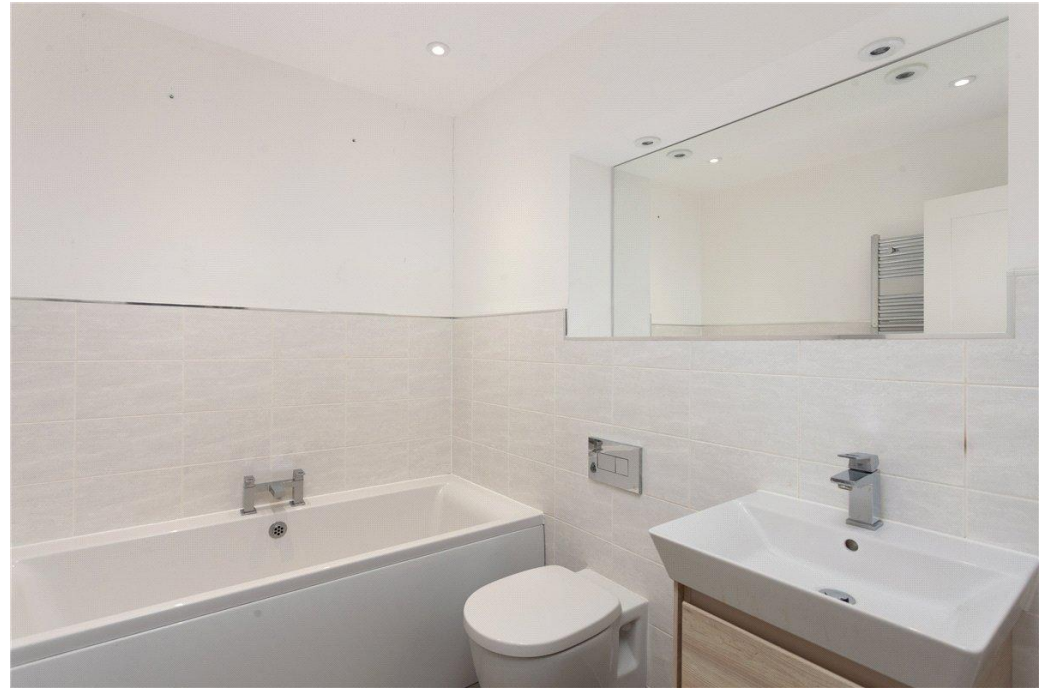
**COUNCIL TAX BAND** F

**EPC BAND** B

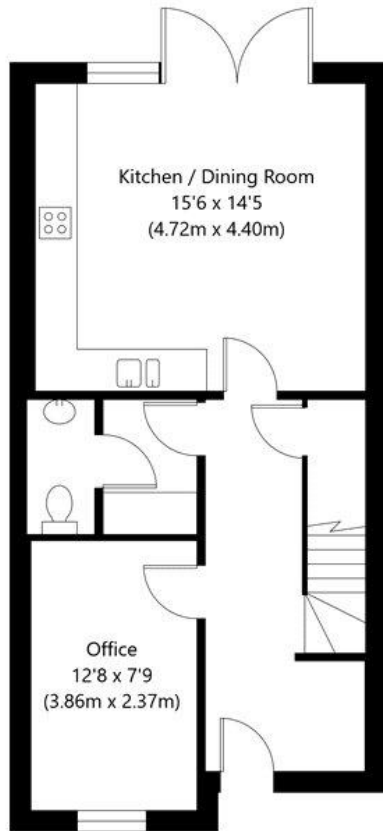
**A BEAUTIFULLY PRESENTED, THREE-STOREY HOME IN THE AWARD-WINNING CHOCOLATE WORKS, OFFERING VERSATILE LIVING SPACE, A SOUTH-FACING GARDEN, BALCONY AND OFF-STREET PARKING.**



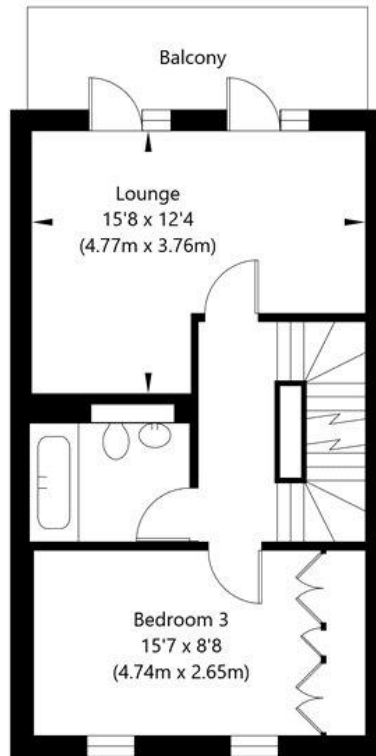




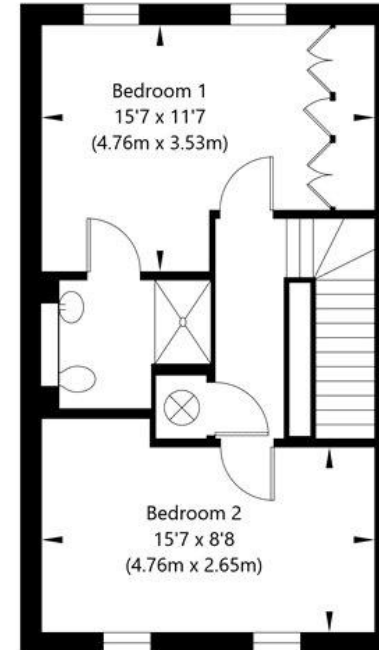
Joseph Terry Grove, York, YO23 1PU



Ground Floor  
GROSS INTERNAL FLOOR AREA  
APPROX. 519 SQ FT / 48.19 SQ M

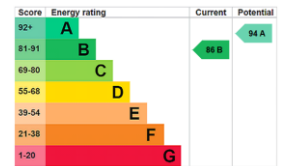


First Floor  
GROSS INTERNAL FLOOR AREA  
APPROX. 444 SQ FT / 41.23 SQ M



Second Floor  
GROSS INTERNAL FLOOR AREA  
APPROX. 445 SQ FT / 41.38 SQ M

NOT TO SCALE - FOR ILLUSTRATIVE PURPOSES ONLY  
APPROXIMATE GROSS INTERNAL FLOOR AREA 1408 SQ FT / 130.8 SQ M  
All measurements and fixtures including doors and windows are approximate and should be independently verified.  
www.exposurepropertymarketing.com © 2024



York 01904 558200

york.resisales@carterjonas.co.uk  
82 Micklegate, York, YO1 6LF

carterjonas.co.uk  
Offices throughout the UK

Exclusive UK affiliate of

**CHRISTIE'S**  
INTERNATIONAL REAL ESTATE

Classification L2 - Business Data

**IMPORTANT INFORMATION**

These particulars are for general information purposes only and do not represent an offer of contract or part of one. Carter Jonas has made every attempt to ensure that the particulars and other information provided are as accurate as possible and are not intended to amount to advice on which you should rely as being factually accurate. You should not assume that the property has all necessary planning, building regulations or other consents and Carter Jonas have not tested any services, facilities or equipment. Any measurements and distances given are approximate only. Purchasers must satisfy themselves of all of the aforementioned by independent inspection or otherwise. Although we make reasonable efforts to update our information, neither Carter Jonas LLP nor anyone in its employment or acting on its behalf makes any representations warranties or guarantees, whether express or implied, in relation to the property, or that the content in these particulars is accurate, complete or up to date. Our images only represent part of the property as it appeared at the time they were taken. If you require further information please contact us.